



United Way of
Lancaster County

2019-2020
Community Report



THE BIG PICTURE

United Way of
Lancaster County



MISSION To mobilize the caring power of our community to achieve impactful social change.

VISION To build a community in which every individual enjoys equal opportunity to succeed.

CONTENTS

From Our Leaders	5	Making Our Way	6
Collective Impact Partnerships	8	Stories of Impact	9
Pandemic Response	10	Tocqueville Society	12
Legacy Society	13	211	14
Leadership Society	16	VITA	18
Women United	20	Volunteer Center	21
Corporate and Employee Gifts	23	Honoraria and Memorials	24
Board of Directors	24	Staff	24
Our Way – Forward	25	Statement of Financial Position	26

WHAT IS OUR WAY?

It feels like we are living in a moment of history. I believe my daughters' children will learn about these moments in their history classes. Perhaps the questions are which chapter will be written, and what will be written about these days in the years to come? It is our objective at United Way of Lancaster County to do what we can to mobilize and coordinate responses in a way that brings unity and as successful an outcome as possible to the pandemic.

Many people are afraid of change...they only see chaos and risk. I have always seen opportunity in change, and frankly I yearn for it. Change means the chance to grow. In community development work, we do not have the luxury of beginning from the position that things are best left the same because we see the pain and strife and yearning for justice of our neighbors who are not as fortunate as others.

The question most often asked is "what can I do?" when question we should ask is "what more can I do?" Our imaginations should not be limited to the resources we think we have committed but to those which are needed to complete the task. And what is that task? That task is that we have an equitable society, one where platitudes like self-reliance can ring true because the structures of our society do not unequally limit the potential of community

members. That is why I'm here - why I joined United Way.

In my first year here, we ran headfirst into a pandemic and I couldn't be prouder that our organization stepped up to partner on big projects like Lancaster Cares with Lancaster County Community Foundation and founding Lancaster Partnership for Learning Equity with Steinman Foundation. We also continued the yoeman's everyday work of supporting our 70+ Collective Impact partners. Not just what can we do, but what more can we do when we work together. When I think about the good in this community and where we all want to go, I know United Way can make a major contribution to that work and I hope you will too. That's Our Way forward, together.



Kevin Ressler
President & CEO

FROM OUR BOARD

It has been an honor and a privilege to serve as Board Chair of this organization. The impact we are making in helping individuals and families in our own backyard has been outstanding. More children are entering kindergarten prepared to learn. More adults are able to access quality employment. More people are leading healthier lives. And when the pandemic struck our community, United Way shifted its focus to address food and housing insecurities, as well as emerging needs that we couldn't predict. We are uniquely positioned to step up, pull together resources and help address so many needs.

Don Maier
Board Chair

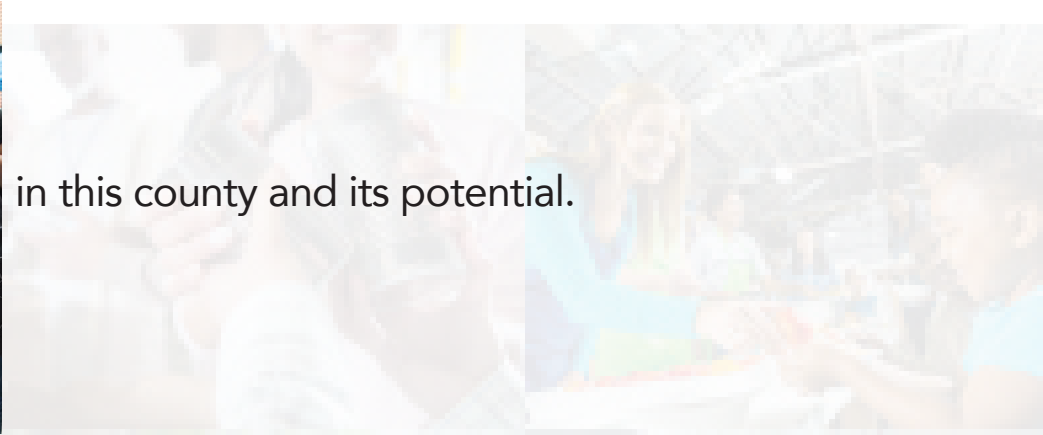
FROM OUR CAMPAIGN CHAIR

The year 2020 brought us a reality that no one ever anticipated. COVID-19 has uprooted the world's sense of 'normalcy' and has affected every one of us in unimaginable ways. United Way has brought resources, guidance and hope to Lancaster County residents: our 211 call center has fielded numerous calls for assistance, the partnerships we've helped build have provided a much-needed connection to care, and thanks to your investments, we've made sure that people can stay in their homes and feed their families. United Way will continue to build a better future for everyone, with your help. Thank you for your continued support.

Dominic Rice
Campaign Chair



BELIEVING in this county and its potential.



CARING a

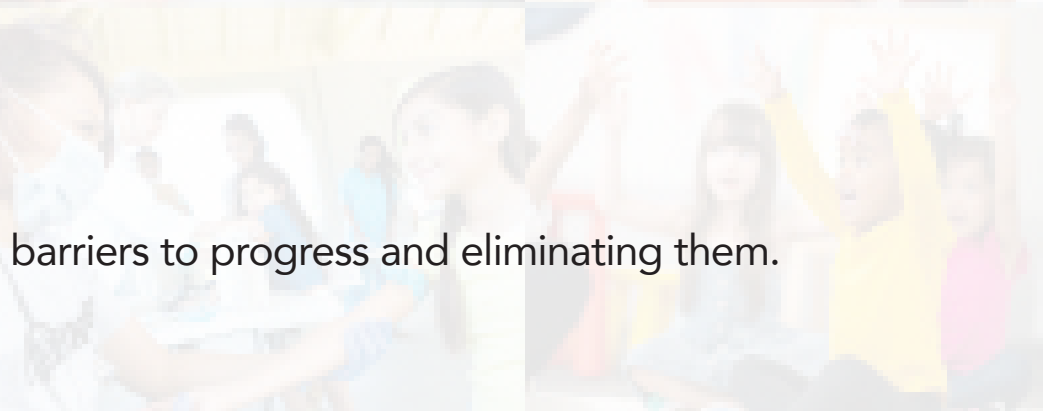
MAKING OUR WAY -

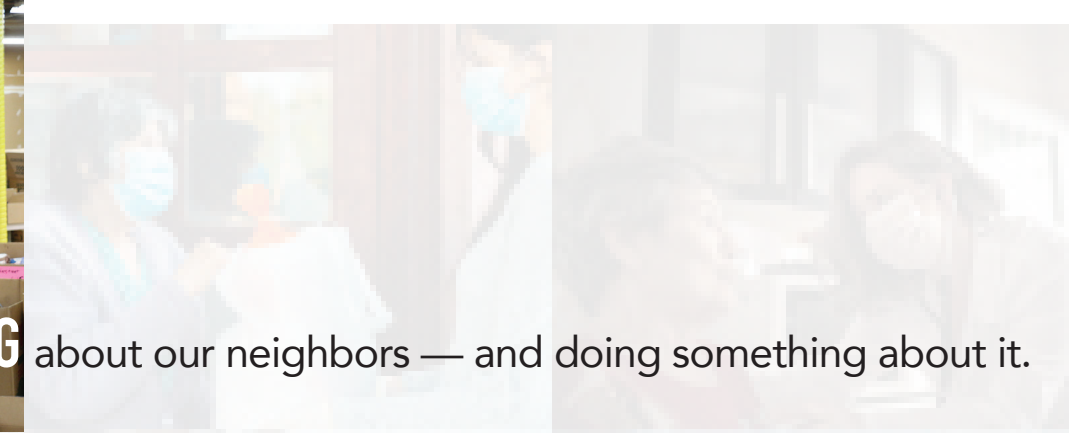


CREATING opportunities for others to share success.



IDENTIFYING barriers to progress and eliminating them.

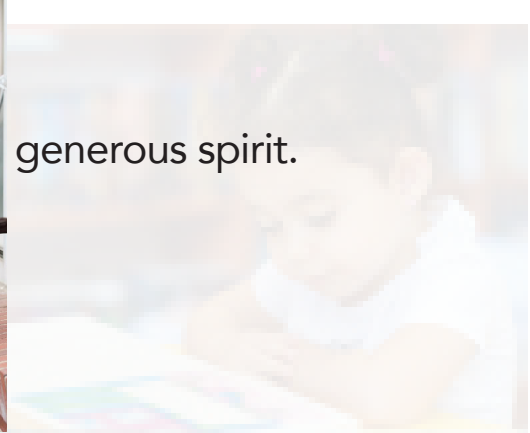




Learning about our neighbors — and doing something about it.



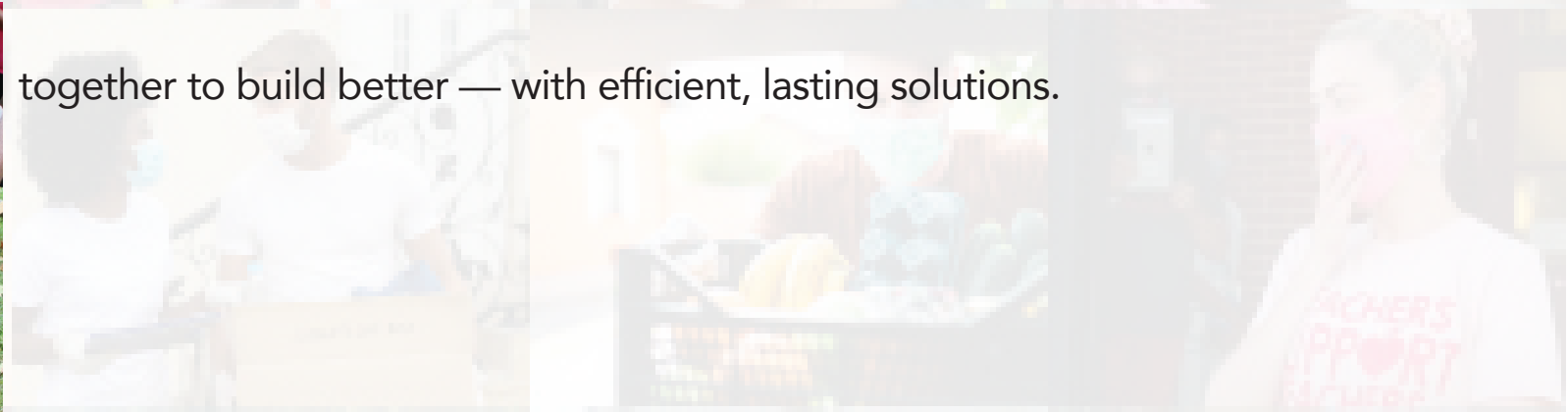
ACTIVATING generous spirit.



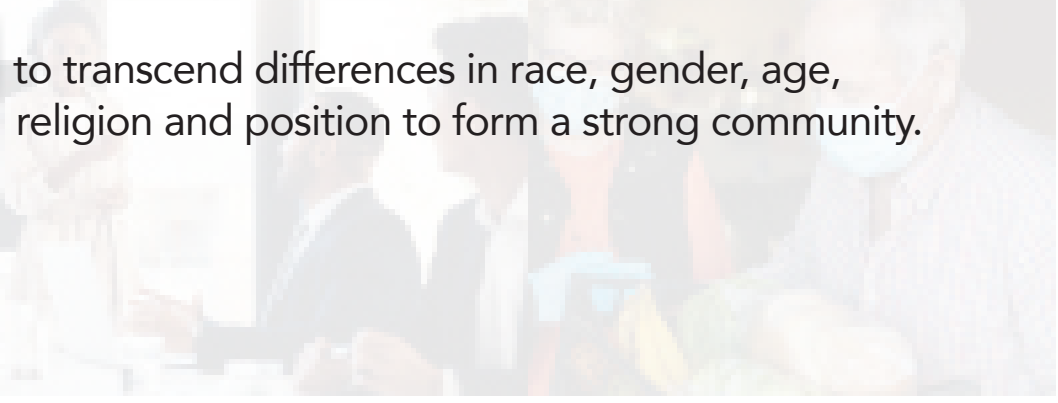
— TOGETHER.



WORKING together to build better — with efficient, lasting solutions.



UNITING to transcend differences in race, gender, age, religion and position to form a strong community.





COLLECTIVE IMPACT PARTNERSHIPS

Much like a conductor in an orchestra, we compose big plans and bring talented people together to create a symphony of partnerships to drive progress.

Big challenges call for big ideas, big effort, and many hands, minds and talents. We appreciate the efforts and dedication of these organizations to coordinate and collaborate with us to provide integrated, dimensional support to the people and families of Lancaster County.



STORIES OF IMPACT

In July 2019, our Collective Impact Partnerships were focused on improving kindergarten readiness, increasing post-secondary credentials, reducing poverty, and increasing access to care. Plans had been made, goals had been set, and activities

were in full swing. Our partners' impact stories capture only a glimpse of the valuable work being done every day that is supported by United Way of Lancaster County.

When COVID struck, it soon became evident that the needs of our community were changing. Schools closed, jobs were lost, and as time went on, providing for basic needs for more and more residents became a priority. Stay tuned to learn how we pivoted to provide crucial supports during this unprecedented time. Resilient, flexible, empathetic. That's Our Way.

EDUCATION:

P-3 PARTNERSHIP PATHWAYS | **IMPACT STORY:** A MOTHER WAS TRYING TO ENTER THE WORKFORCE, BUT HER DAUGHTER HAD EXTREME SEPARATION ANXIETY AND COULD NOT HANDLE DAYCARE. VISITS WITH FIRST 10 FOCUSED ON HOW SHE COULD SUPPORT HER DAUGHTER'S DEVELOPMENT. DAUGHTER'S RISK LEVEL WENT FROM "VERY HIGH" TO "LOW RISK"



PATH TO ONE GOOD JOB | **IMPACT STORY:** WE'VE HAD THE PLEASURE OF FOLLOWING A CLIENT'S JOURNEY FROM SEEKING ASYLUM IN THE UNITED STATES, TO EARNING HER GED, TO ENROLLING IN AND GRADUATING FROM LPN TRAINING, TO HER WANTING TO GIVE BACK TO OTHERS.



PLANT THE SEED OF LEARNING | **IMPACT STORY:** WE'VE EXPANDED TO INCLUDE MORE SCHOOL DISTRICTS THROUGHOUT THE COUNTY. WE HAVE FAMILIES THAT ATTEND SESSIONS AT MULTIPLE LOCATIONS ACROSS THE COUNTY BECAUSE THEY ENJOY THE ENRICHING PLAYGROUP ATMOSPHERE.



SAIL (SYSTEMS ALIGNED IN LEARNING) | **IMPACT STORY:** ONE DAYCARE PROVIDER OPERATING OUT OF HER HOME, HAVING RECEIVED "BE READY ROVER" SERVICES SINCE FEBRUARY 2016, RECENTLY OPENED HER OWN DAYCARE CENTER IN THE COMMUNITY. A SAIL MENTOR HAS BEEN OFFERING RESOURCES, SUGGESTIONS, AND ENCOURAGEMENT FOR SEVERAL YEARS, AND HER DREAM OF OWNING HER OWN CENTER HAS FINALLY COME TRUE!



FINANCIAL STABILITY | HEALTH | ACCESS TO SERVICES:

ELIZABETHTOWN AREA HUB | **IMPACT STORY:** A NEW CLIENT STARTED A DEBT MANAGEMENT PLAN AT TABOR FINANCIAL IN ELIZABETHTOWN. SHE HAD DEBT ON 6 CREDIT CARDS TOTALING \$28,000, HAVING DIFFICULTY PAYING \$1,100/MONTH. TABOR BROUGHT HER PAYMENT TO A MANAGEABLE \$700/MONTH, ALLOWING HER TO BE DEBT-FREE IN 4.5 YEARS.



INTEGRATION SERVICES FOR NEW AMERICANS | **IMPACT STORY:** AFTER STUDYING ENGLISH FOR 4 YEARS AND BUILDING THEIR MEDICAL SKILLS, A GROUP OF INTERNATIONAL HEALTHCARE PROFESSIONALS ENROLLED IN PENN STATE UNIVERSITY'S SECOND-DEGREE RN PROGRAM FOR THOSE WITH A DEGREE TO BECOME AN RN IN 9 MONTHS.



LANC CO MYHOME | **IMPACT STORY:** THROUGH OUR PARTNERSHIPS, WE OPENED A DAY SHELTER IN LANCASTER CITY WHERE WE HAVE NEEDED ONE FOR ALMOST A DECADE. IT HAS BEEN VERY SUCCESSFUL, AND INDIVIDUALS HAVE DEVELOPED A SENSE OF BELONGING AND COMMUNITY.



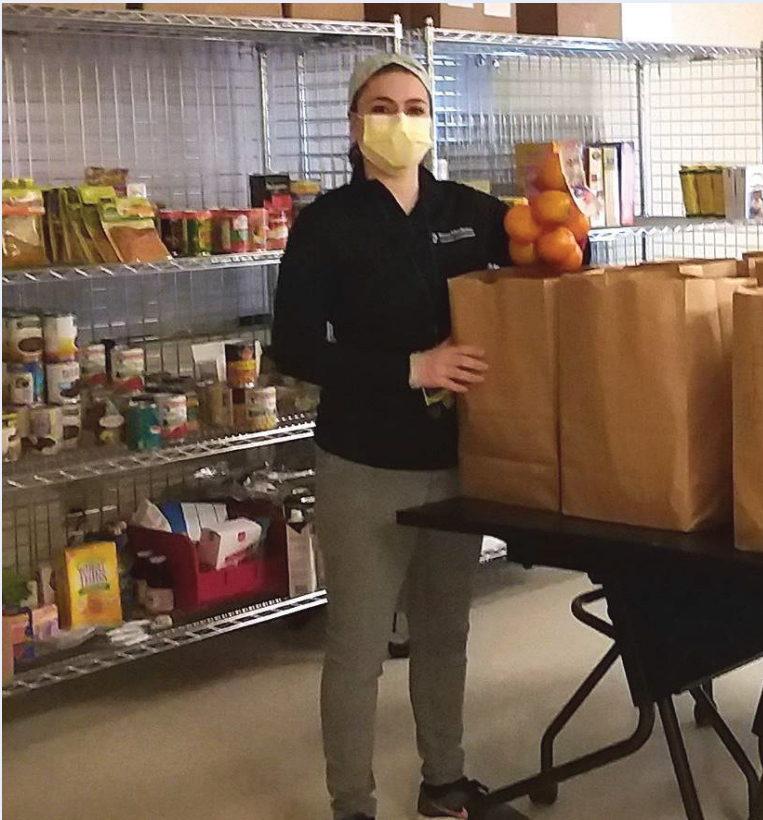
NORTHERN LANCASTER HUB | **IMPACT STORY:** A FAMILY CAME TO US SEEKING UTILITY ASSISTANCE - WE HELPED. LATER, THEY NEEDED TO OBTAIN SNAP BENEFITS - WE HELPED. WE REACHED OUT TO THEM, ENCOURAGING THEM TO NEGOTIATE WITH THEIR LANDLORD TO PAY MORE MONTHLY SO THEY ARE NOT EVICTED.



TOGETHER INITIATIVE NETWORK | **IMPACT STORY:** DURING THIS PANDEMIC, OUR GREATEST SUCCESS HAS BEEN KEEPING OUR FAMILIES FED, INCLUDING SCHOOL CHILDREN. THANKS TO THE GENEROSITY OF THE COMMUNITY, WE ARE RECEIVING 1,000 LBS. OF FOOD WEEKLY TO HELP ENSURE FAMILIES DO NOT GO HUNGRY.

SOLANCO FAMILY LIFE NETWORK | **IMPACT STORY:** THIS PAST YEAR, THE NETWORK ADDRESSED THE EMOTIONAL TOIL THAT THE VIRUS WAS HAVING ON THE COMMUNITY. THE NEWLY FORMED SOLANCO ALLIANCE WORKED IN CONJUNCTION WITH THE NETWORK AND SCHOOL SOCIAL WORKER TO IDENTIFY FAMILIES OR INDIVIDUALS HAVING EMOTIONAL ISSUES AND PROVIDE THEM WITH ASSESSMENTS AND COUNSELING.





THE 2020 PANDEMIC: RESPONDING TO EMERGING NEEDS WITH FLEXIBILITY AND FOCUS

HEALTH

- When in-person free meal programs were forced to close, we partnered with Central PA Food Bank, Meals on Wheels and the Office of Aging to assemble and deliver 5,000 emergency meal kits to seniors.
- Working with a coalition of organizations, we created a quarantine space for people experiencing homelessness who tested positive for the virus.
- Collective Impact partners shifted focus to provide information, support, referrals and testing for individuals and families.
- Drug and suicide prevention programs shifted to online programming.
- Expanded virtual counseling services helped with COVID-related stress and mental health concerns.
- We provided translation services to help non-English speakers understand COVID-19 guidelines.

FINANCIAL STABILITY

- Partnering with Lancaster County Community Foundation, we helped raise over \$1 million to support non-profits helping those facing challenges including housing issues, food insecurity, and various emerging needs due to COVID-19.
- For the newly unemployed, we provided budget counseling.
- For job-seekers, we provided online instruction for micro-credential courses and virtual coaching.
- Our VITA services shifted from in-person free tax prep to drop-off service, preparing 9,488 returns and saving clients \$3 million in fees.

EDUCATION

- For parents facing school closures and the need to teach their children at home, we shared online resources.
- For parents with young children at home, we provided virtual workshops to replace in-person activities.
- We supported caregivers with regular contact with family care providers to help navigate changing COVID guidelines.
- For operating child care providers, we assisted with access to food bank and personal protection equipment resources.
- Our mentors helped caregivers understand and apply for CARES Act relief funding.

MORE

- Lancaster Cares Grants created in conjunction with Lancaster County Community Foundation to support emerging needs across our community as part of the Lancaster Cares COVID-19 Response Fund.
- OneUnitedLancaster.com news site was created in response to the pandemic. The site aims to report the truth in Lancaster County and will continue reporting nonprofit and community news post-pandemic.

**That's our way in Lancaster County.
That's our way at United Way.
And you are at the heart of it all.**

2020: THE YEAR THAT CHANGED (ALMOST) EVERYTHING.

Plans. Systems and routines. Lives. Like everyone else, we had to change the way we approach our work. Because needs and priorities suddenly changed, too. Our purpose, however, remained and remains the same: to improve life for all in Lancaster County.

TAKING ACTION.

The pandemic struck quickly. So did its fallout. We had to be equally quick to respond — and our people and partners made it happen.

DRIVING FOCUS.

Even as the world changed, we stayed focused on health, education and financial stability — but we've adjusted to meet the shifting nature of those needs.

UNITING EFFORTS.

The collaborative nature of our work — currently 10 partnerships comprised of 75 non-profits working with more than 200 other local organizations including government entities, faith-based organizations, schools and businesses - allowed us to make the connections and form the coalitions needed to address the region's most urgent challenges with efficiency and impact.

STREAMLINING SYSTEMS.

Early in the pandemic, we built OneUnitedLancaster.org — a one-stop portal for COVID-19 information and assistance — connecting people with the resources they needed, when they needed them most.

FIXING NOT JUST THE WHAT, BUT THE WHY.

In every case, we strive to deliver lasting improvements — to address not just the “what” of the need, but also the “why” of the circumstances: the systemic causes and systemic solutions.

TRANSFORMING THE CARING POWER OF LANCASTER COUNTY INTO BIG-PICTURE IMPACT.

Years of cultivating relationships with hundreds of organizations across the region has given us insight into specific situations as well as overall dynamics and trends.

This unique perspective allows us to understand the complexity of ongoing challenges in Lancaster County. As a result, we're able to marshal forces, direct dollars and optimize volunteer hours to drive meaningful, big-picture change.

THAT'S OUR WAY.





TOCQUEVILLE SOCIETY

This group includes some of United Way of Lancaster County's most longstanding and dedicated investors. Nationally, members collectively invest more than half a billion dollars in community transformation. Locally, our members contribute more than \$500,000 to lasting positive change here in Lancaster County.

**La Table Ronde
de Millions de Dollars**
(Million Dollar Roundtable)
Elva B. Wilson*

Ordre d' Egalite
(\$50,000-\$74,999)
Donald & Susan Maier

Ordre de Liberte
(\$25,000-\$49,999)
David R. & Tamela
J. Fassnacht

Membres de la Societe
(\$10,000-\$24,999)
William W. & Susan C. Adams
Robert F. & Laura L. Beard
Hans G. Bell
Jan & Tom Bergen
Dick & Barb Blakinger
Nevin & Kathleen Cooley
Susan & Jerry Eckert
Wendell L. Funk, MD
Mike & Kathy Granbois
Vic Grizzle
John K. Herr III & M.
Diane Koken
S. Dale & Sadie High
Colette & James Hipolit
Donald & Boots Horn

David & Jean Hosler
Joanne M. Judge & Rick
Oppenheimer
Tom & Sharon Kennedy
Stephen & Veronica Kepchar
Donna & Karl Kreiser
Walt & Fran Legenstein
Molly & Monty Milner
Ed & Michelle Monborne
James H. & Joan L. Moss
Roger & Grace Moyer
Stephen Murray & Anne
Jackson
Mr. Terence O'Day
Joan & Wayne Paxton
Jason & Melissa Reiman
Beth & Dominic Rice
Rick & Jessica Rodgers
Mike & Andrea Shirk
James E. & Mary E. Shreiner
Stephen & Patricia Stockwell
Mr. James A. Stubbs
John & Amy Swanson
Kevin & Denise Walling
Paul W. & Judy S. Ware
Audrey Walker Warfield
George & Nancy Weaver
Eric & Kristin Wenger
Linda & Jeff Wright

*Deceased

LEGACY SOCIETY

The Legacy Society recognizes United Way of Lancaster County investors who have perpetuated their giving past their lifetimes. Their planned gifts represent their ongoing commitment and investment in the future — leaving a legacy of positive transformation in Lancaster County.

Gifts Received

Lawrence Arnold Trust

Victor L. Baer Trust

Mary L. Baer Trust

Estate of George P. Bolbach

Estate of Cora M. Burkhart

Estate of Betty J. Cannon

Estate of John C. Carter

Estate of Dorothy R. Chapman

Beatrice M. Clopp Trust

Estate of Walter L. Connor

Billy DiGilio

Estate of Genevieve Diller

Susan C. Eckert Fund

Estate of Maude M. Eshelman

Paul B. and Maude M.

Eshelman Trust

Paul B. Eshelman Trust

Estate of Doris Flick

Gladys L. Good Trust

Estate of Wyona R. Graver

Estate of Dorothy Ann Haley

Estate of Arthur K. & Florence
M. Hammel

Elmer E. & Virginia M.

Hansell Trust

Estate of Rodney W. Harnish

Estate of James J. High

In memory of J. Leroy &

Pauline E. Hoeltzel

Estate of Charles B. Hull III

Estate of Edmund C. Johnson

Estate of William G.

Johnstone, Jr.

Estate of Mary A. Kauffman

John C. Kirchner

Memorial Fund

Estate of Robert E. Knoll

Estate of Herman R. Kramm

Estate of Helen E. Larson

Gilda M. Markoski Fund

Estate of Virginia M. Mehler

Charles H. Miller Trust

Margaret S. Moss

Reuel R. Rupp and Mayanna
E. Rupp Trust

Mary Sachs Trust

Estate of Verna A. Scott

Estate of Helen A. Shaub

Alvin W. Shenk Trust

Sol J. Slotkin Trust

Estate of Keith Spalding

Estate of Lewis H. Wessinger

Estate of George H. Wiest

Elva Boyd Wilson Fund

Estate of Helen M. Witmyer

Letters of Intent

Shaun Balani

Scott & Kay Burky

Dr. J. Frederick & Theodora

M. Chairsell

Gloria E. Degler

Tony & Sherry Chivinski

Robert J. & Janice A. Cook

Susan & Jerry Eckert

Deborah R. Gerlach

John Gooding

Kathy Pandelidis

Granbois, Esq.

Edward A. Hauck &

Stefanie B. Valar

Anita Hess

Carol D. Hess

Ken & Louise Hess

David E. Hosler

Suzette & Richard Kneeder

Walt & Fran Legenstein

Richard Haughton Livesey III

Mrs. Mae F. Livesey

Iris S. MacRae

Joe & Anna Molony

Ronald & Julie Myer

James E. & Mary E. Shreiner

Sue Suter

Ann & Ron Vail

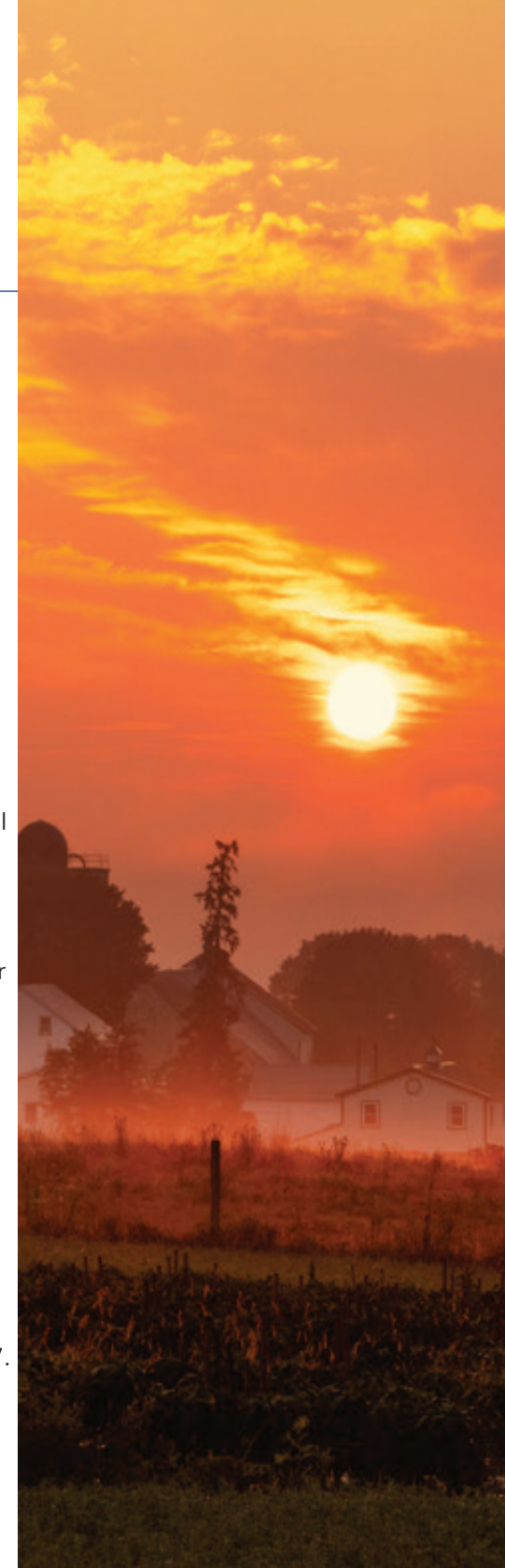
Rick & Colleen Watson

There are a variety of ways to include United Way of Lancaster County in your will or estate plans. Popular vehicles include:

- Naming United Way of Lancaster County as beneficiary in your will.
- Making an outright gift of cash, appreciated stock or real estate.
- Naming United Way as the beneficiary of a retirement plan.
- Naming United Way as the beneficiary of an existing or new life insurance policy.
- Making a gift through a charitable gift annuity.

We invite you to consider making United Way a part of your legacy. To learn more, please contact Sara Yoskoski at 717-824-8127.

We apologize if we failed to honor anyone's generous philanthropy. We will be working to update our Legacy Society.





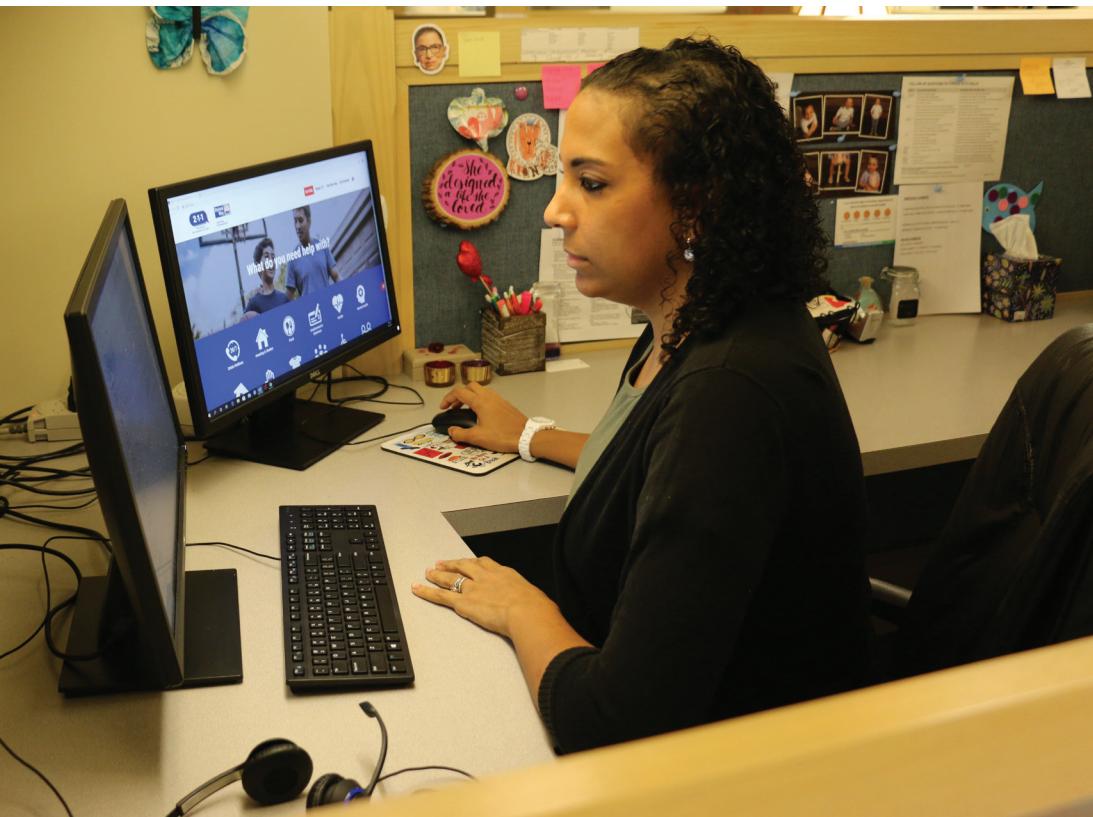
Three simple numbers activate the powerful support network of our region.

Our 24-hour call center is the access point for people in need throughout this region. We're committed to assisting each one of them with compassion and commitment, providing direct support or information that gets them to the help they need.

During the ongoing COVID-19 pandemic, 211 has been assisting people with eviction prevention, food access, and additional resources available from 600 agencies in the region.

211 also provides information and referrals for a full range of services, including:

- Child care
- After-school programs
- Food banks
- Elder care
- Basic needs (medical services, financial assistance, etc.)
- Health services
- Housing and homelessness



Phone: **211** or **855-567-5341**
Text: **Your zip code to 898211**
Database: Search for resources by visiting
www.pa211.org

Over the past year, we've responded to more than 61,000 contacts to help people find resources in their area.

DIAL 2-1-1.
FIND HELP. GET CONNECTED.

PENNSYLVANIA
2-1-1
East
Powered by United Way

United Way

The graphic features a central white hand holding a yellow smartphone with '2-1-1' on the screen. Surrounding the phone are various white icons: a piggy bank with coins, a head with a cross, an apple, a lightbulb, a pill, a house, a cross, and a necktie. The background is a solid orange color.

LEADERSHIP SOCIETY

Diamond Leaders

\$7,500-\$9,999

Douglas & Karyn Cadle
Philip & Gretchen Miller
Michel S. Vermette

Platinum Leaders

\$5,000-\$7,499

Kathryn & Steve Borkgren
Robert K. Bowman
Mark & Patty Fitzgerald
Bob & Patty Ford
Earl A. & Christina M. Furman
Scott & Lynn Fyfe
Mrs. Bernice K. Gerhart
Jerry & Monika Glenn
John Kayser
Katherine & Dan Kravitz
Jim & Marcie Mack
Megan Mattern
Karl E. Moyer
Curt & Kim Myers
Daniel J. Platt
Paul & Ellen Romano
F. Michael Rommel
Dave & Anne Marie Schulz
Mark & Andrea Stanley
Kristin Wiest & Michael Winters
Stacey & Robert Youcis

Gold Leaders

\$2,500-\$4,999

William Allard
Carolyn J. Beam
Randy Beck
Frank Bennett
Michael & Alison Bernhardt
Andrew K. Bittinger
F. Joe Byorick
Mr. Edward M. Carreras
Brian & Donna Carson
Regina & Andrew Church
Jonathan Clark
Bill Clayton
Margaret Costella
Laurie & Allen Cubell
Michael & Lori DePorter
Keith G. Dorman
Colette & Steve Evans
David & Karen Frank
Jean & Jim Fullerton
Timothy & Jennifer Gaalswyk

Jay & Karen Garber
John & Susan Garofola
Marjorie Gerhardt
Tom & Jennifer Goldbach
Thomas P. Haaf
Judy A. Haas
Jeffrey S. Harsh
Josh & Catherine Hauser
Kenneth E. & M. Louise Hess
Steven & Elizabeth High
Yon & Nichole Hinkle
Bjork Hupfeld
Michael & Bernadette Kelly
Ron & Denise Kennedy
Deb & Chuck Kereczman
Tim & Anne Koenig
Mitch & Michelle Long
Michael J. Lorelli
Robert & Linda Macina
Maureen Gimpel Maley
Stephen & Mary McNamara
Robert & Linda Miller
Paul & Jane Mueller Jr.
Teresa A. Murray
Nancy & Craig Nadig
James Nelson
Miguel Nistal
John & Sherrie O'Quinn
Art & Marcia Pangburn
Elwood & Lori Pickell
Renee Pilotti
Shereen & Phoenix Rann
David & Pam Reist
Sean & Cheri Reynolds
Clint & Deanna Rider
Timothy & Jennifer Riley
Mike & Becky Ripchinski
John & Joyce Saeger
Amy L. Sahn
Shawn & Wendy Serfass
E. Follin Smith
Marianne Smith & James A. Probolus
Hal & Brenda Smoker
Bob & Robin Stauffer
Jeffrey Sterner
Robert Stoyko
Chris & Carrie Strang
Tina Sweigart
Mark & Maria Swomley
Chet & Suzanne Szczepanski
Paul J. Szykman
Bernadette Taylor & Matt Early

Jack & Ann Treier
Michael Walmer & Elizabeth
Masciale-Walmer
Mike & Sandy Wege
Camille Werzowa
Jeffrey Youngquist
Heather J. Zellers
Andrew J. Zulkosky

Silver Leaders

\$1,500-\$2,499

Stephen F. Anzaldo
David W. Atherholt
Eric & Laura Athey
Kelly A. Beaver
Rick & Cheryl Bennett
Nancy L. Bieber
Craig Black
Dan & Cindy Blakinger
Angelina M. Borelli
Beth Y Bowers
Adam & Stephanie Bracke
Alex Brame
Kathleen J. Bucher
Jackolyn Brinkman &
Raymond A. Bures
Kevin & Laura Burke
Scott & Kay Burky
James & Denise Cassel
Lourdes Cho
Harry & Kristy Connell
Dan & Jane Conrad
Judith G. Cook
John D. Cox
Matthew & Brianne Cramer
Annalisa Crannell & Neil Gussman
Gary & Jane Davidson
Michael & Debra DeBerdine
Dean A. Divittore
Ryan & Casey Ellis
Julie Englert
Scott & Laura Fiore
Francis & Suzanne Fox
Chad M. Fritz
Brett Gagnon
Mario Gallelo
Thomas & Sarah Gehret
Mr. Richard H. Gherst
William Glick
Todd Gohn
Jeffrey A. Goldman
Darryl & Dominique Gordon

Kyle & Corinne Grimes
Jeffrey L. Harsh
David Hartzell
Melissa Hartman
David Hartzell
Suzanne M. High Family Fund
Lisa Hodgson
Jeremy Horning
Paul Hough
Dan & Wendy Jarrett
Kevin Johnson Family
Elizabeth Katz
Mark & Deborah Kauffman
Scott & Wendy Kimmel
Scott Krause
Tracey Lavallias
Don Lee
Joe & Kristy Legenstein
Pam & Kirk Liddell
Bret Lieberman
Susan & John Lines
Jessica M. Macker
Gladys Malone
Mr. Thomas Malone
Mr. Richard Manning
Tracy & Aaron Marines
Sal Marone
Brian & Kathleen Massar
John & Melissa Mattilio
Don & Michelle McCann
Melissa McCollough
Pam McDonald
Anne McGrann
Phillip E. McIntyre
Kristina J. & Henri P. McVey
Ronnie & Ilse Medlock
Pat & Steve Meyers
Steven C. Miller
Steve & Jess Nieli
Mark & Bethany Novis
Mr. Ralph Obermeier
Krystyna & Peter Oleske
Andy & Kerri Paladino
Mr. Marc & Dr. Carol Phillips
Kathy Prime-Sposito
John & Carole Reed
Susan & Dennis Rhoades
Donn & Terri Ridley
Charles Romberger
Todd & Angie Sargent
R. Clair & Doris Sauder
Carol & Phillip Schonour
Michelle Schori

Michael Sever
Rich & Ethel Sheidy
Mary Ann Shirik
Mr. & Mrs. Rodney Simcox
Mark A. Smith
Sheila L. Snyder
Dan & Georgia Steinbacher
Lawrence K. Stinson
John & Pam Stoner
Rick Stoutt
Matthew B. Supplee
Bruce & Leslie Tahsler
Richard C. Troutman
Russell & Catherine Urban
Charles P. Weekes
Debby Huber Wells
Sheri & Allen W. Whittemore
David Wright
The Yehl Family
William & Seana Zee
Mark & Teresa Zettlemployer

Bronze Leaders

\$1,000-\$1,499

Heather Ace
Paul W. Aierstuck
Aimee Anderson
Timothy J. Angstadt
Woodrow Paul Arnold
Joe & Deb Arthur
Stacy Artz
Tyler & Heather Ashley
Donald & Thelma Aurand
Tadesse & Kimberly Bahata
Ms. Lauralee B. Baker
Mr. Lester R. Baker
Tom & Susan Baldrige
Kyle Baldwin
David E. Barber
Douglas & Tami Barton
Michael L. Bell
Dave & Deb Bendit
John T. Bertz
Jose A. Betancourt-Alicea
Bonnie Beverlin
Michael & Stephanie Biggerstaff
Mr. & Mrs. Dana and Roberta Billig
Marie & Bob Bini
Jim & Karen Biondilillo
Denise Bird
Andrew R. Black
Toni & John Black

LEADERSHIP SOCIETY

Kenneth Blessing
Bruce & Deana Blom
Matt Blyth
William Boben III
Robert & Reba Bolinger
John & Joanne Bowman
Frank & Kay Brady
Joseph T. Breneman II
David Breniser & Pamela Minnick
Bridy Family
Christopher R. Brown
Richard & Nancy Brown
Michael Brubaker
Scott Bruso
John Buckwalter
Whit Buckwalter
David Burdyn
Clayton E. Burke
Michael Burr
Collette Busser
Peter & Carol Caddick
Michael & Melanie Canfield
Doug Cassel
Linda Leffler Castagna
Jerry & Karen Chase
Tracey J. Ciesnolevicz
Joe Ciapanna
John & Elaine Coleman
Dixie D. College
Edward L. Conjar
Amy Costello
Matthew Cozzi
Jennifer Craighead Carey & Greg Carey
David Creighton
Bret & Pam Daniels
Michael & Kristin De Stefano
Steve & Patti Deck
D. Terry & Gloria E. Degler
Marc Dell
Srinivasa S. Devarkond
Vito DiCamillo MD
Melody C. Dillman
Robert & Abby Dodds
Ernie & Donna Doerschuk
Susanne & Frank Dombrowski
James J. Dougherty, III
Joseph A. Dullinger
Jeannette & Geoff Eddowes
Cordell Ehrnstrom
Denise E. Elliott, Esq.
Maria DiStravolo Elliott
Charlotte L. Ellis

Tamara & Kurt Engel
John E. Estep
Gabriel A. Farias
Corey R. Faus
Susan Federowicz
Norma J. Ferdinand
Dallas & Sarah Young Fisher
Carolyn Flint
Ann & Ray Foley
Liz Ford
David & Jennifer Freedman
Jill & Michael Frey
Paul W. Frick
Darren & Katrina Fritz
Dorothy Gallagher
Kenneth Gebhard
Jeremy Ryan Geib
Geisenberger-Sable Family Fund
Henry H. Gibbel
Henry R. & Jolyn Gibbel
Tom Gibble
Michelle & Mike Gibbons
Michel & Karen Gibeault
Jill E. Gilbert
Cindy & Marty Glass
Kenneth M. Goddu
Lois A. Greenawalt
Cy & Deb Greenya
Jennifer Groff
Stanton W. Grube
Jeffrey F. Grundhoffer
Mr. & Mrs. Mark A. Hackenburg
Barbara Hall & Michael Frailey
Chuck & Mary Hansen
Cynthia Hart
Shaun M. Hart
Jill Ranck Hauck
Robert Haydock
Suzanne Haynes
Phil & Karen Heckert
Milton Hefft
Amy Heidel
Wes Heidel
Paul J. Heim
Dawn A. Helm
John & Frances Hillenbrand
Andrew Hinkley
Paul & Caroline Hoffer
Christina M. Hoffman
Bret C. Hoffmaster
Jennifer Hood
David & Barbara Hornberger

Kathy Lynn Horne
Jeffrey & Alicia Horst
Phil & Pam Houseal
Michelle & Jace Ingham
Joseph J. Irwin
Richard L. Jackson
Alan Jacobs
Andrew & Kara Jones
Sugirtha D. Judd
Stuart & Veronica Juppenlatz
Dan & Rachel Jurman
John P. Kalafut
Mark Katkovcin
Dr. Ann S. Keim
H.M. Kelley
Bill & Ellen Kepler
Peter & Annie Kerekgyarto
Kim, Jubum
Virginia Kirchner
Keith & Nicole Koger
William W. & Mary Ellen Kopetz
Robert M. & Hale A. Krasne
Robert Kreidler
Eric D. Krimmel
Robert C. Krissinger, MD
Mr. Daryl B. Krushinsky
James Ku
Adrienne K. Kuhlengel
Holly Kutz
Albert Laird
Francisco Lamboy
Jay & Wendy Lance
Jennifer Lauver
Wendy N. Laverty
Deb & Darren Lechner
Marcia & Larry Lefever
Mark & Stephanie Legenstein
Mr. & Mrs. Anthony F. Legenstein
Kathy Leinbach
Benton Levengood
Bruce & Lynda Limpert
Paul & Jan Lipinsky
Jonathan & Kelly Litofsky
Mark & Julia Livingston
H.S. Long
Mr. & Mrs. George A. Ludwig
Scott A. Lutz
Doris Lyons
Michael Lyons
Donna Lee Mackin
Mr. & Mrs. Anthony M. Macinanti
Ms. Joye Mahler

Beth Malkowski
Edward Maloney
James M. Manley
Mr. & Mrs. Arthur K. Mann
Mr. & Mrs. Paul Mattaini
James & Susan Maurer
Brandon McGaha
Teri R. McHale
Marian McKee
Susan McMullen
Julie McNamara
Mary Jo H. Medura
Elli & Jon Miller
Jeff & Gail Miller
Lynn A. Mills
Claude & Julie Minnick
Theresa A. Mongiovi
Cindi Moses
Brad Mowbray
Mr. & Mrs. Earl M. Myers
Mahendra Naiddo
Dr. Jeanne H. Neff
Todd T. Nein
Bob & Mimi Newcomer
Kay Nichols-Wolfe
Randall & Tammy Ober
Cindy O'Neill
Trevor L. Orth
Jim & Marcia Ostrowski
Victoria & Richard Paoletti
Megan Peters
Jennifer L. Pinney
Robert & Cheryl Poli
John J. Popielarski
Rick & Vanessa Rankin
K. Suzanne Ransom
Frances & Eric Rebert
Karen S. Reeser
Timothy Rhodes
The Riefenstahl's
Dr. & Mrs. Bruce Rodenberger
Marchant & Laurel Rolle
Dr. & Mrs. Robert L. & Anna M. Roschel
Frank J. Rosol, Jr.
Anne M. Rutkowski
Caesar Juan Santiago
Joseph Savage
James & Sally Saxton
Bev & John Schantz
Matthew & Allison Schlegelmilch
Andrea & John Schmid
Jeanine & Jeff Schreiber

Tim & Linda Schuetze
J. & Nicole Seroky
Scott & Jessica Shenk
Sharon M. Sherban
Brad Sherwood
Ms. Kimberly H Shirker
Richard Short
Michael & Wendy Shupp
Shane Sites
Teffanie Ness Smeltzer
Mark & Jennifer Smith
Philip & Erin Smith
Tom & Michele Souders
Ellen & Kevin St. Cyr
Christine Stabler
Donald G. Stafford
Mr. Stephen D. Staman
Susan L. Stone
James & Victoria Stuccio
Scott & Lynda Summy
John W. & Anne B. Tennis
Daria C. Teter
Hazel Thomas
James H. & Judy L. Thomas
J. Richard Thomas
Donald & Melanie Totaro
Stephen W. Trapnell
Michael Troutman
Alan E. Tshudy, Sr.
Jeremy Tshudy
Jonathan Ulmer
Mr. & Mrs. Daniel Valen
Peter Velotas
Pam Vnenchak, MD
Glenn & Gail Walz
Kathleen R Warfel
Gordon P. Washington
Angie Watson
Jeffrey C. Watson
Michael & Kerri Weaver
Joan & Marc Weiner
Peter & Robin Wengrenovich
Todd A. Wentling
Lars & Amy White
Michele L. Whitley
Anthony L. Wiker
David S. Willenbecher
David E. William
Thomas S. Williams
John C. Wood, MD
Timothy & Andrea Zellers
Scott & Holly Zieber

This list was created on June 30, 2020. We apologize if your name was omitted.

VOLUNTEER INCOME TAX ASSISTANCE (VITA)

Hardworking help that makes a real difference - that's our way

For anyone in Lancaster County making \$62,000 or less, VITA provides access to free tax preparation. That's meaningful help when it's needed most.

In 2020, we helped **10%** of eligible Lancaster County residents. With more volunteers, we can make an even bigger impact. Learn more at vita.uwlanc.org/volunteer.



2020 Impact in Numbers

\$2,590,000 Saved in Tax Prep Fees

\$12,138,000 Total Refunds to Clients

Average Tax Refund **\$1,517**

9,488 Total Tax Returns Prepared
*Page Symbol = 1,000 Returns



7,927
Before Shutdown


1,561
After Shutdown

The pandemic has created many challenges for VITA's tax preparation process and how to serve our clients safely and successfully. There are several easy virtual tax preparation options to use from the convenience and safety of your home:



Prepare your own
taxes for FREE at
FreeTaxPrepLancaster.org

(Do-It-Yourself)

 **GetYourRefund.org**

We have teamed up with
GetYourRefund.org to help you
file your taxes online with the
assistance of IRS-certified
volunteers. Go to
FreeTaxPrepLancaster.org
to begin the process.
(Virtual Tax Prep)





WOMEN UNITED

The mission of Women United is to invest in the betterment of Lancaster County women. Member contributions are invested in programs and initiatives through an annual grant process. The 2019-20 Women United grants were focused on promoting financial stability through further education and increased financial empowerment.

Bethany Novis, Chair
Jen Lauver, Vice Chair

Members

Heather Ace
 Susan C. Adams
 Toni & John Black
 Beth Bowers
 Kay Burky
 Linda L. Castagna
 Gloria E. Degler
 Susanne H. Dombrowski
 Maria DiStravolo Elliott
 Tamela J. Fassnacht
 Susan Federowicz
 Susan J. Garofola
 Michelle Gibbons
 Jill E. Gilbert
 Kathy Pandelidis Granbois, Esq.
 Jennifer L. Groff
 Barbara E. Hall
 Melissa Hartman
 Jill Ranck Hauck
 M. Louise Hess

Sadie High
 Christina M. Hoffman
 Ann S. Keim
 Heidi M. Kelley
 M. Diane Koken
 Katherine B. Kravitz, Esq.
 Wendy Lance
 Jen Lauver
 Fran Legenstein
 Julia Livingston
 Doris Lyons
 Maureen Gimpel Maley
 M. Michelle McCann
 Pam McDonald
 Susan McMullen
 Julie McNamara
 Theresa Mongiovi
 Dr. Jeanne H. Neff
 Bethany Novis
 Joan K. Paxton
 Dr. Carol Y. Phillips

Susan Rhoades
 Beth Rice
 Joyce Saeger
 Amy L. Sahn
 Angie Sargent
 Allison E. Schlegelmilch
 Michelle Schori
 Stella Sexton
 Sharon M. Sherban
 Dr. Brenda J. Smoker
 Ellen St. Cyr
 Robin D. Stauffer
 Patricia Stockwell
 Ann Treier
 Kevin & Denise Walling
 Linda Wright

This list was created on June 30, 2020. We apologize for any omissions of members or step-up members. We also thank supporters who invested gifts under \$1,000 in Women United's mission.



UNITED WAY OF LANCASTER COUNTY'S VOLUNTEER CENTER

Optimizing people power - that's our way

Making the most of every effort is our specialty. If you have a notion to help, we have all the opportunities you need. The United Way of Lancaster County Volunteer Center is a one-stop source for volunteer service, connecting people and organizations with projects across Lancaster County.

Helping people is our way - and you are at the heart of it. Get involved today at uwlanc.galaxydigital.com



**GET
CONNECTED**

United Way Powered by United Way

Find Volunteer Opportunities Online
GET CONNECTED

BERKS COUNTY
BICYCLE CLUB

MAKING OUR WAY, TOGETHER

Volunteers, donors, partners, and people of Lancaster County — all of you help to shape who and what we are, what we do, and how we do it. You are at the heart of our way.

LIVE UNITED

THIS IS
OUR
WAY

CORPORATE AND EMPLOYEE GIFTS

Many thanks to the following companies and their generous employees, who supported the 2019-2020 campaign.

Pillar Society (\$100,000 and above)

Armstrong Flooring, Inc,
Armstrong World Industries, Inc./
Armstrong Foundation
Exelon
Fulton Financial Corporation/
Fulton Bank
The Hershey Company
The High Companies*
Penn Medicine Lancaster
General Health
UGI Utilities

Tier 2 (\$50,000 - \$100,000)

Eurofins Lancaster Laboratories*
Kellogg's
PACCAR Parts
PNC Bank
PPL Electric Utilities
RKL*
United Parcel Service

Tier 3 (\$25,000 - \$50,000)

AHF Products
Barley Snyder*
Certified Carpet
Donegal Mutual Insurance*
Irex Corporation*
Lititz Mutual Insurance Company*
Murray
Truist (formerly BB&T)
Wegmans

Tier 4 (\$10,000 - \$25,000)

Burns & McDonnell
Comcast
Eastern Alliance Insurance Group
Electron Energy Corporation
Enterprise Rent-A-Car
Ephrata National Bank
Graham Packaging Company
M & T Bank
McNees Wallace & Nurick
Met-Ed / FirstEnergy
Nationwide Mutual Insurance Company
Packaging Corporation of America
Pennsylvania State Employee
Combined Appeal
Rodgers & Associates
Roehling Medical Lancaster
Saxton & Stump LLP

School District of Lancaster
Stauffers Of Kissel Hill
Summit Advisory
Target
Turkey Hill Dairy
United Way of Lancaster County
Wells Fargo
Willow Valley Communities
Woodstream Corporation

Tier 5 (\$5,000 - \$10,000)

Air Products
Arconic
Community Action Partnership of
Lancaster County
County of Lancaster
Conestoga Valley School District
Costco
Donnelley Financial Solutions
Engle-Hambright & Davies
FedEx
First National Bank
Giant Food Stores
ITT Corporation
Morgan Stanley
Oak Tree Development Group, LLC
Rhoads Energy Corporation
Somat Company
TriStarr Staffing
Warfel Construction Company
Warwick School District
Weis Markets
Wellspan Ephrata Community Hospital
Wesco
WGAL 8

Tier 6 (\$1,000 - \$5,000)

AAA Central Penn
Alcon Manufacturing, Ltd
AMETEK
Armstrong Ceiling Plant
Armstrong Floor Plant
August Mack Environmental
Beers & Hoffman, Ltd
Berk-Tek
Blakinger Thomas
Brookfield Renewable
Brown Schultz Sheridan & Fritz
C. S. Davidson
Capital Blue Cross
Cargas Systems

Cargill Cocoa & Chocolate
Carpenter Technology Corporation
Central Penn Food Bank
Charter Homes & Neighborhoods
City of Lancaster
Cocalico School District
Compass Real Estate, LLC
Corman Kokosing Construction Co.
DenTech
Dutch Apple Dinner Theatre
ELA Group
Elizabethtown Child Care Center*
Elizabethtown School District
EnerSys
Ephrata Area School District
ETEMCO
Franklin & Marshall College
Goodville Mutual Casualty Company
Graham Capital Company
Graham Engineering Corporation
Harbor Compliance
Harrisburg Area Community College -
Lancaster Campus
Hershey Entertainment & Resorts
Highmark Blue Shield
J. L. Clark
Johnson & Johnson
Lampeter Strasburg School District
Lancaster Chamber
Lancaster City Government
Lancaster City Housing Authority
Lancaster Theological Seminary
Lancaster- Lebanon Intermediate
Unit 13
Larson Design Group, Inc.
Lumsden Corporation
Luthercare
Manheim Central School District
Manheim Township School District
Marco's Italian Restaurant
Morgan Corporation
New Holland Agriculture
North Group Consultants
Nxtbook Media
Orstown Bank
Penn State Health Milton S.
Hershey Medical Center
Penn State University
Penske Truck Leasing Co
Pfizer

Phoenix Contact Inc.
Quadrant Engineering Plastic Products
Ranck Plumbing, Heating, &
Air Conditioning
Reist Popcorn Company
RGS Associates
S&T Bank
SC Johnson
Scantron
Sheetz
Spectra Energy / Enbridge
Springwood Hospitality
The Hess Agency
Trout, Ebersole & Groff
Trustmark, formerly CoreSource
Tyson Foods
UGI Energy Services
UGI HVAC
Univest Bank
Weidenhammer Systems Corporation
Westfield Insurance

Those companies with a "" symbol have submitted their Circle of Honor application this year. We acknowledge that due to Covid-19 many companies may have met the standards of the Circle of Honor but were unable to submit their applications. We apologize if your company was missed and we appreciate your willingness to go above and beyond for United Way of Lancaster County.*

Pre-K EITC Scholarship Contributors

Oak Tree Dev. Group
BB&T, now Truist
UHS of PA
PPL Electric Utilities
Rodgers & Associates
UPMC Health

Foundations

Brossman Foundation
Ferree Foundation
Gooding Group Foundation
Lancaster County Community
Foundation
Norfolk Southern Foundation
Reading Health System Foundation
Rotary Club of Lancaster Foundation
Steinman Foundation

HONORARIUM & MEMORIALS

In honor of these very special people:

In honor of Sue Suter, from: Ms. Susan E. Savage

In honor of Larry Boozer, from: Kellie & Kevin Stover

In honor of Donegal Insurance Group, from: Team One Adjusting Services, LLC

In honor of Tracie Burton, from: Kelly Perry

In memory of these very special people:

In memory of Barney McGrann, from: Joan Hermann

In memory of Paul C Haines, from: Tina Eichelberger

In memory of Judy Shenk, from: Sheila & Harry Winick

In memory of Jim Toole, from: Michael McGhee

In memory of Doug Hostetter, from: John & Anne Tennis

In memory of William Snyder, from: John & Anne Tennis

In memory of Jere Kenderdine, from: Paul & Saveria Freisher

STAFF / BOARD

STAFF

Alisha Engle - Housing Specialist
Audrey Lilley - Community Outreach Manager
Barbara Hall, Director - IT & IS
Barbara Zercher - Director, Resource Development
Benjamin Wesley - IT Intern
Cindi Moses - VP, Community Initiatives
Emily Ritchey - Community Initiatives Intern
Emily Schaeffer - Resource Development Administrative Assistant
Heather Hutsell - Administrative Assistant, Administration
Julie Kennedy - Lead Housing Specialist
Kate Anderson - Housing Specialist
Kevin Ressler - President & Chief Executive Officer
Kyle Gamble - Communications and Marketing Associate
Logan Vega - Database Assistant
Lorna Swinton - Information & Referral Specialist
Madeline Seiler - Director, Marketing & Communications
Maria Lapp - Accountant
MaryAnn Lugo-Rodriguez - Information & Referral Specialist
Michelle Ingham - Director, Financial Stability
Olivia Smucker - Marketing & Communications Intern
Patricia Espinosa-Vargas - 211 Quality Assurance Manager
Quentin Moore - Grants Manager
Sara Cannon - Housing Specialist
Sara Yoskoski - Director, Leadership Giving & Events
Steve O'Neill - VITA
Tamala Delgado - Information & Referral Specialist
Tim Stuhldreher - Editor, One United Lancaster
Toni Gainer - Director, 211
Tram Trinh - Database Administrator
Trish Houser - 211 Database Manager
Vince Cronin - Business Development Associate
Wendy Jarrett - VP, HR & Administration

BOARD:

OFFICERS

Chair of the Board - Don Maier Community Volunteer
Immediate Past Chair - Kathy Pandelidis, Granbois Saxton & Stump, LLC
Chair Elect and Vice Chair, Finance - Stephen Nieli, PNC Wealth Management
Vice Chair, Resource Development - Mike Frey, Ranck Plumbing, Heating and Air Conditioning
Vice Chair, Collective Impact - Janet Treer, The Treer Group
Vice Chair, Marketing & Communications - Kyle Grimes, WGAL-TV
Secretary - Robin Stauffer, High Companies

DIRECTORS

Deepa Balapur, Compass Real Estate, LLC
Dan Betancourt, Community First Fund
Brian Bliss, Solanco School District
Deborah Brandt, Fig Industries
Monika Chap, Fulton Bank
Tina Citro, WellSpan Health, Ephrata Hospital
Toni Donovan, Penn Medicine, Lancaster General Health
Ben Eison, Reliance Medical Billing Solutions, LLC.
Bob Gantz, RKL
Alisa Jones, Lancaster Health Center
Peter D. Kerekyarto, Beers, & Hoffman Architecture
Dr. Sharee Livingston, OBGYN of Lancaster
Maureen Maley, Europhins
James Malfregeot, BB&T now Truist
Willonda McCloud, Brightside Opportunities Center
Lynn Mills, Walz Group
Theresa Mongiovi, Brubaker, Connaughton, Goss, Lucarelli, LLC
Rakesh Popli, Community Volunteer
Victor Ramos, Millersville University
Dr. Damaris Rau, School District of Lancaster
Beth Riley, Community Volunteer
Angie Sargent, Fulton Financial Corporation
Ted Sickler, LNP
Ismail Smith-Wade-El, LancCo MyHome
Jordan Steffy, Children Deserve a Chance Foundation/Attollo
J. Richard Thomas, Community Volunteer
Michael Truong, Truist

OUR WAY — FORWARD

With a reinvigorated focus on supporting and creating initiatives that produce lasting change, we envision an equitable Lancaster County where every individual has an opportunity to succeed, and the entire community thrives as a result.

LEADING SYSTEMIC CHANGE

Thought leadership, collective impact & advocacy

Our unique county-wide perspective and access to business, education, government, healthcare, and non-profit leaders — as well as generous community donors and dedicated volunteers — allow us to bring diverse people together to help solve complex problems that one group alone can't fix.

CONNECTING COMMUNITY RESOURCES

Expanded program offerings, volunteer engagement & donor base development

As a backbone organization, our role is to provide our community partners with the tools and resources they need to achieve our shared goals. To do that, we can quickly coordinate people and resources to ensure that our partners are better prepared and equipped to help people in need of a hand up. We are invested in an innovative approach that empowers our community and develops the expertise needed for 21st century collaboration.

PROMOTING PROFESSIONAL GROWTH

Training, community partnerships & operational excellence

When we know better, we do better. United Way of Lancaster County is actively creating safe spaces for people to gather, challenge mindsets, and develop new ways of being and doing — skills and perspectives that can bring positive changes to organizations and our community.



FINANCIAL STATEMENT

Statement of Financial Position

Year ended June 30, 2019

Assets

Current Assets:

Cash and Cash Equivalents - \$2,211,991

Pledges Receivable - \$1,265,987

(less allowance for uncollectible pledges of
\$394,366)

Accounts Receivable - \$38,400

Grants Receivable - \$174,431

Investment Interest Receivable - \$13,714

Prepaid Expenses/Other - \$58,795

Total Current Assets - \$3,763,318

Other Assets:

Security Deposit: - \$13,668

Receivables – Long Term - \$0

Investments – Unrestricted - \$3,469,335

Investments – Temporarily Restricted - \$449,003

Investments – Permanently Restricted - \$717,163

Total Other Assets - \$4,200,166

Equipment, Net of Accumulated Depreciation -
\$186,514

Beneficial Interest in Perpetual Trust - \$619,242

Total Assets - \$8,769,240

Liabilities

Current Liabilities:

Partnership Allocations Payable - \$2,279,725

Accounts Payable, Trade - \$161,770

Due to Designated Agencies - \$248,541

Due to Other Organizations and Grantees - \$517,294

Accrued Expenses - \$48,461

Accrued Salaries and Wages - \$67,783

Total Current Liabilities - \$3,323,574

Long-term Liabilities:

Pension Contribution Payable - \$0

Total Liabilities - \$3,323,574

Net Assets

Without Donor Restrictions - \$2,519,745

With Donor Restrictions - \$2,925,921

Total Net Assets - \$5,445,666

Total Liabilities and Net Assets - \$8,769,240

A copy of the financial statement for the fiscal year ended June 30, 2019, audited by certified public accountants engaged by United Way of Lancaster County, is available by request.

GIVE. ADVOCATE. VOLUNTEER. LIVE UNITED™



The High companies are proud supporters of United Way of Lancaster County.

High and its co-workers share United Way's vision of a world where all individuals and families achieve their human potential through education, income stability, and healthy lives. Each year, High conducts a corporate campaign to help United Way partners in the communities in which we live, work, and play. High co-workers have demonstrated their generosity by giving their time, talent, and financial support for the needs of vulnerable populations.

Thanks to High co-workers, United Way, and to all in our communities who help us Live United.



Industry Leadership. Environmental Stewardship.
Community Commitment.



**United Way of
Lancaster County**

1910 Harrington Dr. Ste. A
Lancaster, PA 17601