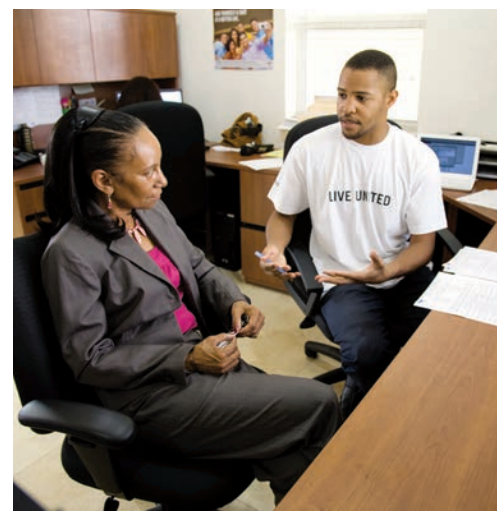
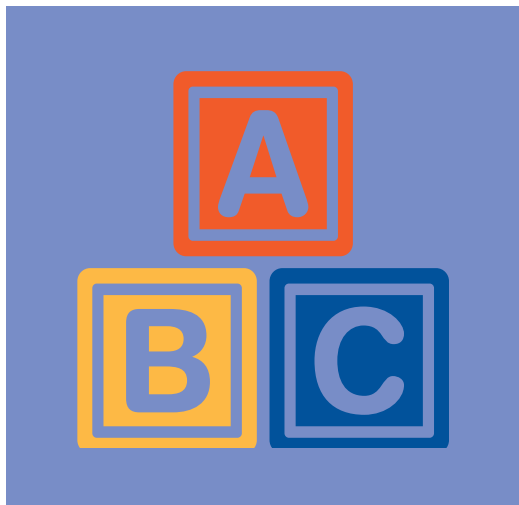


# GREAT THINGS HAPPEN WHEN WE **LIVE UNITED**



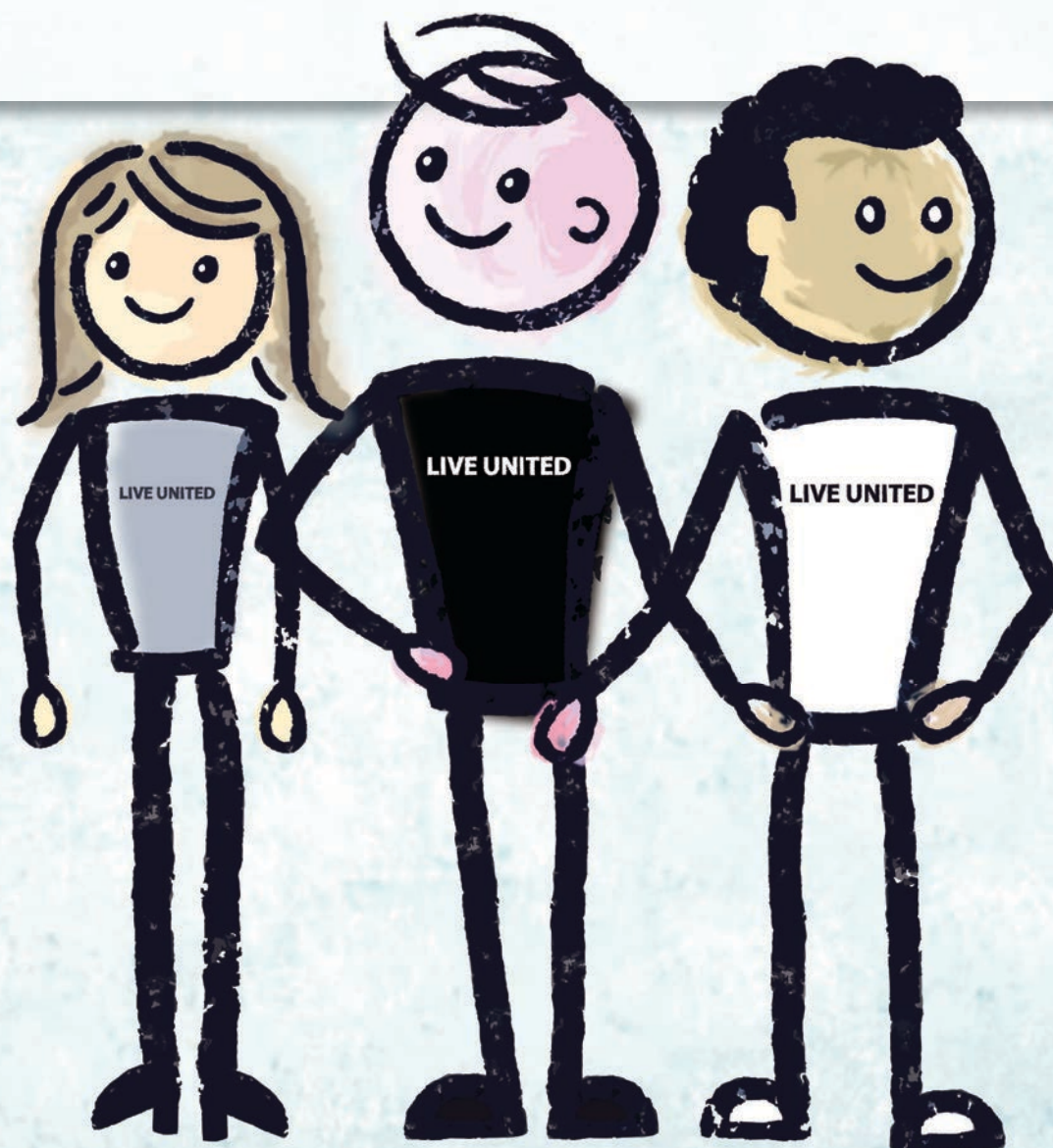
United Way  
of Lancaster County



**MAKING  
CHANGE  
HAPPEN** FOR  
**90**  
**YEARS**  
1925-2015

# Our communities. Our people. United.

Fulton Financial Corporation is proud to partner with the United Way in helping to make our communities better places to work and live. It's a great opportunity to create a bright future for everyone and we are happy to take part together.



## Fulton Bank

LISTENING IS JUST THE BEGINNING.®

Fulton Bank, N.A. Member FDIC. Member of the Fulton Financial Family.  
Fulton Bank, N.A. is not affiliated with United Way.

VISIT US AT: [fultonbank.com](http://fultonbank.com)

# TABLE OF CONTENTS

GREAT THINGS HAPPEN WHEN WE  
**LIVE UNITED**



**United Way  
of Lancaster County**

CENTRAL PENN  
**BUSINESS JOURNAL**

1500 Paxton St. | Harrisburg, PA 17104  
717-236-4300 | fax 717-236-6803  
www.CPBJ.com

CEO/Publisher  
**David A. Schankweiler**

President  
**Larry Kluger**

Business Manager  
**Donna Schankweiler**

Associate Publisher  
**Douglas D. Cooper**

Project Editor  
**Erica Reed**

Editorial Coordinator  
**Barbara Phillips Long**

Operations Director  
**Chad Pickard**

Graphic Designer  
**Amanda Eisner**

Contributing Designer  
**Ann Marie Irvine**

Sales Manager  
**ShaunJude McCoach**

Account Executive  
**Sarah Plesic**

Vice President,  
Audience Development  
**Zander Gambill**

<b>COMMUNITY UNITED</b> .....	<b>4</b>	<b>VOLUNTEER UNITED</b> .....	<b>12</b>
Vision, Mission & Goals .....	4	Volunteer Center .....	12
From Funding Agencies to Fostering Change... ..	4		
From Our Leaders .....	5	<b>INVEST UNITED</b> .....	<b>13</b>
From Our Campaign Chair .....	5	Pillar Society.....	13
Our Journey to Bold Community Impact.....	6	Circle of Honor .....	13
Countywide Impact .....	7	Labor Support Awards .....	13
		Legacy Society .....	13
<b>PARTNER UNITED</b> .....	<b>8</b>	Tocqueville Society .....	14
Community Impact Partnerships .....	8	Women's Leadership Council .....	14
Partnership Story Highlights .....	10	Emerging Leaders Society.....	14
		Leadership Society .....	15
<b>WORK UNITED</b> .....	<b>11</b>	Statement of Financial Position .....	17
2-1-1 .....	11		
VITA.....	11	<b>LIVE UNITED</b> .....	<b>18</b>
FamilyWize .....	11	You Can Make a Difference.....	18
		Board Members .....	18



**Lancaster General Health is proud to support the  
United Way of Lancaster County.**

**LIVE UNITED!**

Together serving the needs of the community for more than 120 years.

**Lancaster General Health**



# COMMUNITY UNITED

## VISION

We will be a key catalyst to improve lives.

## MISSION

To build a stronger Lancaster County by mobilizing the caring power of our community.

## BOLD GOALS BY 2025:

- 1 100 percent of our children will enter kindergarten ready to learn.
- 2 100 percent of students and adults will have post-secondary credentials.
- 3 Decrease individuals and families living in poverty by 50 percent.
- 4 100 percent of individuals, children and families will have a medical home.



## FROM FUNDING AGENCIES TO FOSTERING CHANGE

More than a decade ago, United Way of Lancaster County embarked on an exciting transformation from **funding nonprofit agencies to fostering community change**. Guided by leading national experts on social change, we began integrating our community assessment research, volunteer leadership and investment process to maximize the community impact of donors' gifts.

- From this foundation, we created long-term, bold goals for performance. By 2025, imagine a Lancaster County where:
  - 1 **100 percent of children will enter kindergarten ready to learn.**
  - 2 **100 percent of students and adults will have post-secondary credentials.**
  - 3 **Individuals and families living in poverty will be decreased by 50 percent.**
  - 4 **100 percent of individuals, children and families will have a medical home.**
- We convened — and will continue to host — educational summits for community leaders, philanthropists and area nonprofit organizations, bringing national experts to Lancaster County to foster new thinking and collaborative interaction.
- We moved to a three-year grant cycle, assuring grant recipients of a secure, longer term financial stream. Of course, this is subject to the amount of funds we have available to invest in subsequent years and ongoing performance from our grant recipients.
- We structured our grant review process to ensure that investments being made by donors across our communities are, likewise, being invested throughout Lancaster County.
- In late May, we awarded \$2.8 million in grants to 17 Community Impact Partnerships composed of more than 100 different Community Impact Partners. These exciting groups of nonprofit organizations, schools, libraries, faith-based groups, government and businesses are all aligning their collective energies to **make BOLD change happen by 2025**.

United Way of Lancaster County is one of many philanthropic investors following this new model. A growing number of United Ways nationally, foundations, government programs and community investors are seeking to maximize their ability to truly impact complex community problems.

Read more at: [www.UWLanc.org/StanfordReview](http://www.UWLanc.org/StanfordReview)

## ULTIMATE COMMITMENT

Proud to **GIVE**

Proud to **ADVOCATE**

Proud to **VOLUNTEER**

Proud to **LIVE UNITED**

The Walz Group is proud to support the United Way and the thousands of donors and volunteers who are committed to improving life in Lancaster County. In addition, we thank our employees for the time and resources they give to charities and organizations in the community throughout the year.

Ultimate Commitment



717.392.8200 | [www.whywalz.com](http://www.whywalz.com)

## ULTIMATE ACCOUNTABILITY

# FROM OUR LEADERS

GREAT THINGS HAPPEN WHEN WE  
**LIVE UNITED**



## United Way of Lancaster County

1. Educating the entire community on the real and lasting results that can be achieved by working collectively and fostering new collaborations.
2. Helping raise the necessary funds from private, corporate, philanthropic and governmental resources to underwrite community-level impact.
3. Identifying strong Community Impact Partnerships in which to invest.
4. Supporting the Partnerships' work and tracking community-wide progress toward attaining the four bold goals.

At the same time United Way continues to align with other community leaders on other initiatives.

- United Way continues to be a key driver of the 10-Year Plan to End Homelessness begun in 2008. Once rooted in our Financial Stability Solutions Council, this work has evolved into a coalition of 148 organizations, government entities and volunteers. The power of multiple partners teaming together on a common community goal has already been demonstrated by eliminating homelessness for veterans and leveraging a federal government investment of \$2.5 million into its work.
- United Way is also involved in Hunger-Free Lancaster County as one of 15 organizations committed to eliminating food insecurity in our community by 2018. In so doing, Lancaster will be the first county in the United States to ensure that every resident has access to three healthy meals a day. Learn more at [www.HungerFreeLancaster.org](http://www.HungerFreeLancaster.org).

**THANK YOU FOR YOUR INTEREST IN YOUR UNITED WAY!** We are delighted to partner with the Central Penn Business Journal to share this timely information with you.

BOLD change is happening across Lancaster County, and United Way is playing leading roles in helping great things happen. Foremost is our leadership in identifying and achieving the four, 10-year goals for BOLD community impact. Our continuing work here is four-fold:

- United Way maintains its alliance with the County of Lancaster, The Lancaster Chamber of Commerce & Industry, Lancaster County Community Foundation and LNP Media Group to measure and monitor six key dimensions of Lancaster County's prosperity. This group continues to track our progress in the areas of community and culture; economic engine; education, health and safety; physical environment; and the well-being of people. For more details, visit [www.LancasterChamber.com](http://www.LancasterChamber.com).
- United Way is collaborating with select members of the Funders Forum of Lancaster County to improve kindergarten readiness. Along with CHI St. Joseph Children's Health, the Ferree Foundation, the High Foundation, Lancaster County Community Foundation, Lancaster Osteopathic Health Foundation, Rodgers & Associates and the Steinman Foundation, United Way is working with Lancaster-Lebanon Intermediate Unit 13, Franklin & Marshall College's Center for Opinion Research and the Pennsylvania Partnerships for Children to identify long-term strategies, barriers and opportunities and best practices for success.

We invite you to join in this journey to a better Lancaster County. Stay informed. Ask questions. Become advocates for change. And invest your time and talents in making BOLD change happen across Lancaster County. **Together, we can make a difference.**

SINCERELY,



**Sue Suter**  
President & CEO, *United Way of Lancaster County*



**Randy Patterson**  
Board Chair, *United Way of Lancaster County*  
Economic Development & Neighborhood Revitalization Director, *City of Lancaster*

# FROM OUR CAMPAIGN CHAIR

**WHAT AN HONOR IT IS TO BE INVITED TO BE THE VERY FIRST COMPANY TO CHAIR THE UNITED WAY CAMPAIGN!** As innovators in marketing and communications, our Nxtbook Media team welcomes the opportunity to mark this break from tradition and chart new waters for United Way. Moreover, we welcome the opportunity to link our respected brand with one of the most well-known, respected brands in the country.



We think it's a perfect alliance. Nxtbook Media has been named an Inc. 500 company and one of Central Pennsylvania's Best Places to Work. We value out-of-the-box thinking, empowerment, results, team work, community, healthy living and healthy families.

That's what United Way stands for, too. They understand that today's Lancaster County has bigger, bolder issues than ever before...challenges that require bigger, bolder solutions. They're inviting companies and individuals to think bigger and bolder. We believe we are the right organization at the right time to carry that message. **Join us, won't you, to make a difference in our community!**

SINCERELY,



**Michael Biggerstaff**  
Campaign Chair, *United Way of Lancaster County*  
Chief Inspiration Officer, *Nxtbook Media*



## OUR JOURNEY TO BOLD COMMUNITY IMPACT

### 2000

- Our board committed United Way to focus its energy and leadership on key community issues.
- A local Success by Six® initiative was chosen as our first focus area, addressing children’s issues relating to early care and education from birth through age 6.

### 2002

- The Interagency Council on the Homeless asked United Way to evaluate housing issues in the county.

### 2007

- We created five Solution Councils to focus on homelessness, early care and education, lifelong learning, primary and preventive health care and safety net services.
- We expanded our focus to address issues relating to financial stability and added a Volunteer Income Tax Assistance (VITA) program to our work.

### 2009

- Our Heading Home initiative expanded to become the Lancaster Coalition to End Homelessness, an independent collaboration of nonprofit agencies, faith-based organizations, government and volunteers who created the 10-Year Plan to End Homelessness.
- We conducted one of our every-five-year Lancaster County Community Needs Assessments.

### 2013

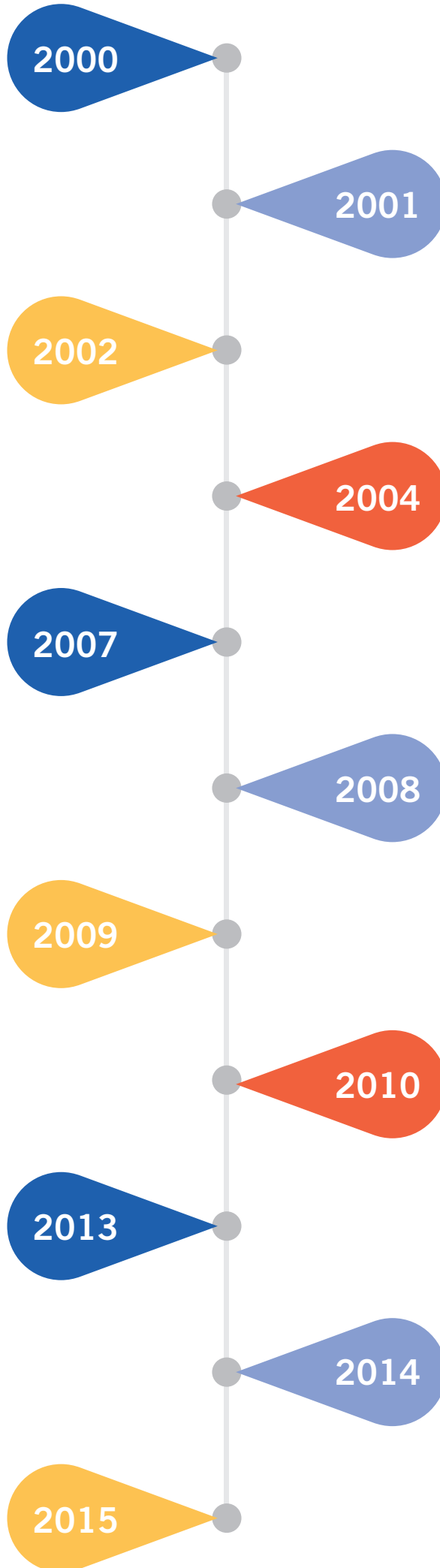
- We consolidated and streamlined our Solution Councils into three focus areas: education, financial stability and health.
- We publicly released our new strategic direction:

BE	DO	SAY
Collaborative facilitators	Empower and promote exceptional community engagement	More that is personally relevant to more individuals
Stakeholders inspired to specific action	Drive impact through greater speed and consistency of execution	Stakeholders have a personal attachment to the effort and results
Trusted as effective, accountable, providing return on investment	Align for greater agility and effectiveness	Celebrate

- We incorporated Safety Net programs into the focus of education, financial stability and health solution councils.

### 2015

- We invested \$2.8 million in our first 17 Community Impact Partnerships.



### 2001

- In partnership with Lancaster Osteopathic Health Foundation, our Success by Six® work attracted the first of two grants totaling \$750,000 from the Heinz Endowment.

### 2004

- We completed our housing study, our board intensified its leadership commitment by affirming its desire to focus on a particular need “until that need is reduced or completely eradicated by directing resources to its root cause,” and we formed a new Heading Home initiative to eradicate homelessness.
- We conducted one of our every-five-year Lancaster County Community Needs Assessments.

### 2008

- We introduced outcome measurements as part of United Way of Lancaster County’s investment process.

### 2010

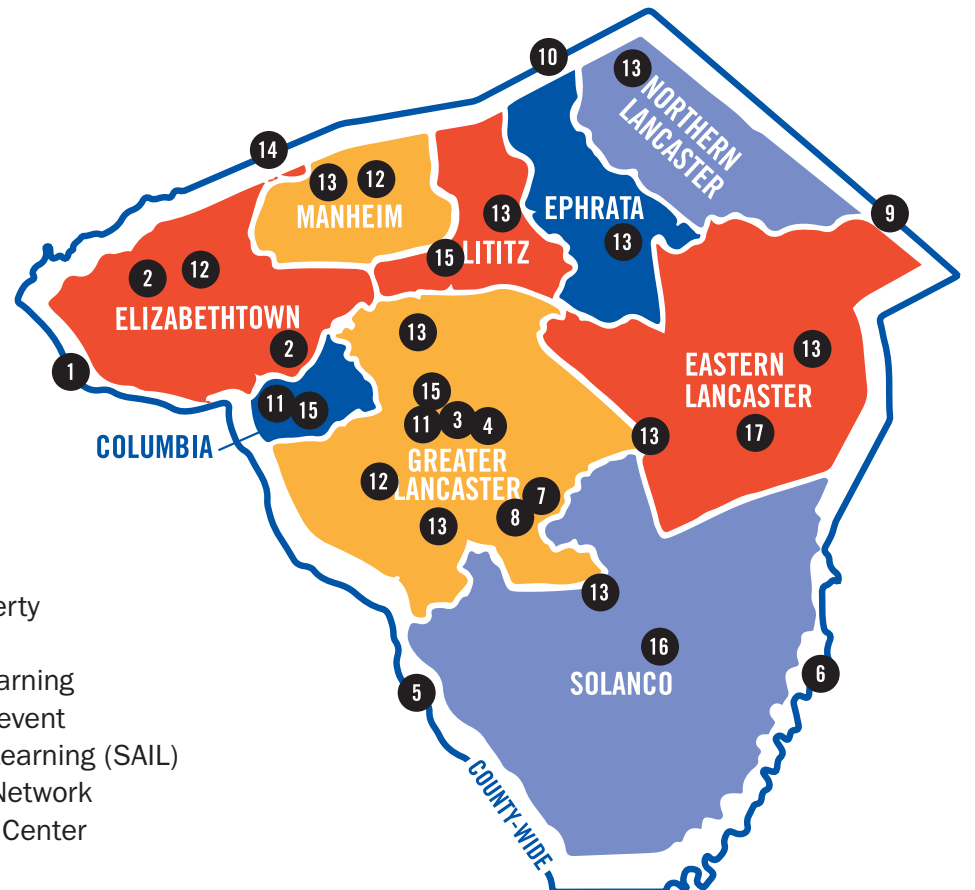
- We were one of 10 United Ways to be awarded an education mobilization grant to work with the Harwood Institute for Public Innovation to begin a journey to engage the community and begin to execute the new business model of “collective impact.”
- We unified our two education-focused solution councils.

### 2014

- We shifted from conducting Community Needs Assessments every five years to developing community-level indicators to track progress annually.
- We released our latest Community Needs Assessment, and our board unanimously adopted four bold, 10-year goals based on that assessment.

## COUNTYWIDE IMPACT

**We have you covered, Lancaster County!** Seventeen Community Impact Partnerships are making BOLD change happen across Lancaster County. From Columbia to Paradise and from Adamstown to Quarryville, tens of thousands of lives are being touched and improved, thanks to generous, caring investors in our community.



### KEY

- |  |                                       |
|--|---------------------------------------|
| 1 Community Wellness                             | 9 Let's Talk, Lancaster               |
| 2 Elizabethtown Area Family Hub                  | 10 Moving Forward                     |
| 3 Impacting Generations                          | 11 Pathways Out of Poverty            |
| 4 Integration Services for New Americans         | 12 Pinwheel Partners                  |
| 5 Lancaster County Coalition to End Homelessness | 13 Plant the Seed of Learning         |
| 6 Lancaster Medical Legal Partnership            | 14 Reunify, Empower, Prevent          |
| 7 Lancaster-South Connections                    | 15 Systems Aligned in Learning (SAIL) |
| 8 The Learning Lancaster Collaborative           | 16 Solanco Family Life Network        |
|  | 17 Together Community Center          |

## The Barley Snyder team is proud to support the **United Way of Lancaster County**



**Barley Snyder**  
ATTORNEYS AT LAW

As we look forward to celebrating our 60th year in 2016, we reflect on the many partnerships with community organizations that we've garnered throughout the years. Barley Snyder promotes volunteerism and community involvement, and is proud to run an annual workplace campaign on behalf of the United Way of Lancaster County!

www.barley.com | @barleysnyder | Lancaster | York | Reading | Hanover | Malvern | Hunt Valley

# PARTNER UNITED

## COMMUNITY IMPACT PARTNERSHIPS

Thanks to the support of thousands of generous donors, United Way invested in these 17 bold, Community Impact Partnerships across Lancaster County. They represent more than 100 Community Impact Partners.

The following partnerships were chosen to receive three-year funding based on the strength of their proposals, the geographic regions and target populations being served and face-to-face interviews. *(Partners are listed below but are subject to change.)*

### Community Wellness

- **SouthEast Lancaster Health Services**
- Community Services Group
- Partnership for Public Health

The Community Wellness partnership removes barriers for community residents looking for a medical home by providing a single point of entry for medical, dental and behavioral health care. It also addresses public health concerns, assists patients with enrollment in health plans and connects them to support services.

### Elizabethtown Area Family Hub

- **Elizabethtown Child Care Center**
- Community Cupboard of Elizabethtown
- Elizabethtown Area School District
- Elizabethtown Community Nursery School
- Elizabethtown Public Library
- Hope Within Community Health Center
- Jewel David Ministries
- Milanof-Schock Library
- Power Packs Project
- United Churches of the Elizabethtown Area
- United Way's Volunteer Income Tax Assistance (VITA) Program

The Elizabethtown Area Family Hub will provide low- and low-middle-income families with access to high-quality early childhood education; kindergarten readiness and transition; tax preparation services; food and clothing assistance; financial workshops; job training; and referrals to physical and behavioral health care services. Materials and support will be provided to increase literacy and help families apply for health insurance and financial assistance.

### Impacting Generations

- **Pressley Ridge**
- COBYS Family Services
- School District of Lancaster
- Susquehanna Valley Pregnancy Services

Impacting Generations work will support at-risk

teen parents and their children through innovative services that focus on the educational attainment of parents and children.

### Integration Services for New Americans

- **The Literacy Council of Lancaster-Lebanon**
- Church World Service
- Franklin & Marshall College's Ware Institute for Civic Engagement
- Lancaster-Lebanon Intermediate Unit 13
- Lutheran Refugee Services
- School District of Lancaster
- SouthEast Lancaster Health Services

Integration Services for New Americans will operate as a hub at the Community School at Reynolds Middle School, serving as a one-stop shop for education, health and financial services for immigrants, refugees and all Lancaster County residents within the boundaries of the School District of Lancaster.

### Lancaster County Coalition to End Homelessness

- **Lancaster General Health**
- City of Lancaster
- Community Action Program of Lancaster County (CAP)
- County of Lancaster
- Tabor Community Services
- The Lodge Life Services
- United Way 2-1-1
- YWCA of Lancaster and 140 other partners

United Way dollars leveraged with Lancaster city and county homelessness funds will specifically address systemic barriers for individuals and families experiencing homelessness. These services include coordinated outreach and assessment (CHART), rapid re-housing locators and rental assistance. This partnership will operate as a cross-functional role connecting providers and systems together for broader impact on individuals and families experiencing homelessness.

### Lancaster Medical Legal Partnership

- **MidPenn Legal Services**
- Care Connections, Lancaster General Health
- Neighborhood Services
- SouthEast Lancaster Health Services

The Lancaster Medical Legal Partnership will advance the financial stability and health of Lancaster County residents needing frequent health services by integrating civil legal aid and financial case management with an intensive, high-utilization health care treatment model.

### Lancaster-South Connections

- **Boys & Girls Club**
- ASSETS Lancaster
- Exit Lancaster
- Lancaster City Alliance

- Lancaster Community Safety Coalition
- Lancaster EMS (LEMSA)
- Lancaster Housing Opportunity Partnership (LHOP)
- The Mix at Arbor Place
- School District of Lancaster
- SouthEast Lancaster Health Services

Lancaster-South Connections will serve as the frontline connection for local families needing support, education and care to achieve success, working closely with Washington Elementary School.

### The Learning Lancaster Collaborative

- **Lancaster Education Foundation**
- Boys & Girls Club
- Exit Lancaster
- Lancaster General Health
- Lancaster Recreation Commission
- Lancaster Family YMCA
- Luthercare for Kids
- School District of Lancaster

Within the Washington Elementary School attendance zone, The Learning Lancaster Collaborative will operate four community locations to expand high-quality early childhood classroom opportunities for 3- to 4-year-old children. Additionally, it will open doors for these families to health, dental and eye care, school-based behavior health services and financial stability workshops.

### Let's Talk, Lancaster

- **Lancaster General Health**
- Community Action Program of Lancaster County (CAP)
- Catholic Charities
- Community Services Group
- Compass Mark
- Lancaster County Behavioral Health & Developmental Services
- Lancaster Osteopathic Health Foundation
- Lancaster Regional Medical Center
- Mental Health America



GOAL 1

100% of our children will enter kindergarten ready to learn.



GOAL 2

100% of students and adults will have post-secondary credentials.



GOAL 3

Decrease individuals and families living in poverty by 50%.



GOAL 4

100% of individuals, children and families will have a medical home.





- Project Access Lancaster County (PALCO)
- Pressley Ridge
- Samaritan Counseling Center
- School District of Lancaster
- T. W. Ponessa & Associates
- Spanish American Civic Association (SACA)
- United Way 2-1-1
- Water Street Ministries
- WellSpan Ephrata Community Hospital
- WellSpan Philhaven

Let's Talk, Lancaster will improve access and treatment for behavioral health care needs, especially for low-income and minority residents.

#### **Moving Forward**

- **Community Action Program of Lancaster County (CAP)**
- MidPenn Legal Services
- New Choices Career Development
- PA CareerLink of Lancaster County

The work of Moving Forward will increase the safety of survivors of domestic violence by providing integrated emergency services, legal representation during the Protection from Abuse process and workforce training.

#### **Pathways Out of Poverty**

- **Community Action Program of Lancaster County (CAP)**
- Central Pennsylvania Food Bank/Hunger-Free Lancaster County
- Columbia Presbyterian Church
- Community Life Network
- First United Methodist Church
- Habitat for Humanity
- Lancaster County Council of Churches
- Millersville University
- Tabor Community Services
- Thaddeus Stevens College of Technology

This multi-functional alliance will provide guidance and direction to low-income individuals and families as they permanently chart their pathways out of poverty.

#### **Pinwheel Partners**

- **Lancaster Day Care Center**
- Byrnes Health Education Center
- Community Action Program of Lancaster County (CAP)
- Elizabethtown Child Care Center
- Pressley Ridge
- Schreiber Pediatric Rehab Center
- Wee Care Day Center

Pinwheel Partners will share space, resources and expertise to ensure low-income families have access to quality early care, education and workforce development.

#### **Plant the Seed of Learning**

- **Cocalico Education Foundation**
- Conestoga Valley, Eastern Lancaster County, Ephrata Area, Lampeter-Strasburg, Lancaster, Manheim Township and Pequea Valley school districts
- Diamond Street Early Childhood Center
- Early Childhood Innovative Connections
- Ephrata Public Library
- Lancaster General Health
- Luthercare
- Power Packs Project
- WellSpan Ephrata Community Hospital

This Community Impact Partnership will engage, educate and empower parents of children from birth to age 2 to plant the seed of learning through supportive environments with meaningful activities.

#### **Reunify, Empower, Prevent**

- **CASA of Lancaster County**
- Bethany Christian Services
- Clare House
- Community Services Group
- Lancaster County Children and Youth Social Service Agency
- Lancaster County Coalition to End Homelessness
- Love INC
- Pressley Ridge
- Tabor Community Services

Reunify, Empower, Prevent will help children currently in or exiting foster care to reunify with their families in safe, permanent and stable homes.

#### **Solanco Family Life Network**

- **New Hope Community Life Ministries**
- COBYS Family Services
- Naaman Center
- Quarryville Library
- Solanco Neighborhood Ministries
- Solanco School District
- Solid Rock Youth Ministries
- Southern End Community Association (SECA)

Solanco Family Life Network will provide integrated early intervention by offering parenting and career planning skills and training, family counseling, tutoring, before- and after-school programs, nutritional support and help with budgeting and heating bills.

#### **Systems Aligned in Learning (SAIL)**

- **Luthercare for Kids**
- COBYS Family Services
- Fizika Group
- Lancaster County Council of Churches
- The Library System of Lancaster County
- Pennsylvania Early Learning Keys to Quality

SAIL will increase the quality of home-based child care by taking a specially equipped van directly to these home-based businesses across the county, enabling them to offer many of the same educational resources as quality, center-based preschools.

#### **Together Community Center**

- **The Factory Ministries**
- Amish View Resorts
- Grace Point Church of Paradise
- Hildebrandt Learning Centers
- Pequea Valley School District
- Safe Families and Safe Families Plus
- Urban Outfitters
- Welsh Mountain Health Centers

Together Community Center will offer a breadth of services and workshops for the under-resourced in eastern Lancaster County, including transportation to and from the site; quality Pre-K Counts child care; teen and adult education and mentoring; and medical, dental and behavioral health services.



**“We’ve gathered each sector of the community** — the churches, the businesses, the school districts, the nonprofits, even those struggling with poverty — and said, ‘What can we do collectively to make our community a better place to live?’”

— **Chuck Holt, Together Community Center Community Impact Partnership**

Focused on all four bold goals, the Together Community Center in Gap offers a breadth of services. The center is an authentic community partnership that has been evolving and growing for years.

Housed in the old Paradise Elementary School, its gym is again reverberating with the sounds of bouncing basketballs and squeaky sneakers. Its rooms are once more alive with lives being changed.

In the center, this partnership is now providing mentoring programs, workshops on parenting, financial management and nutrition, United Way’s

free VITA tax preparation services, caring social services and even a used furniture bank. Next summer, a community garden will sprout, maintained by volunteers who will enjoy its fresh harvest.

Soon, Welsh Mountain Medical & Dental Services will join the center with diagnostic care. Safe Families for Children will offer respite care and housing for families in crisis. And preschoolers from under-resourced families will receive four-star, pre-K education nearby.

Just look at this list of community players at their table: The Factory Ministries, Pequea Valley School District, Grace Point Church of Paradise and other area churches, Hildebrandt Learning Centers, Welsh Mountain Health Centers, Safe Families, AmishView Inn & Suites, Urban Outfitters and a variety of businesses offering internships.

“If we wanted to go fast, we would have gone alone. But we all want to go far, so we’re going together,” said Holt, executive director of the lead agency, The Factory Ministries.



**“Getting ready for kindergarten is completely different** than it was 15 years ago. We’ve aligned the spectrum of services it now takes to prepare children for school and are bringing these resources to home-based child care providers nurturing many of our at-risk children.”

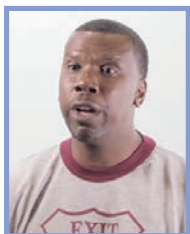
— **Jamie Reichenbach, Systems Aligned In Learning Community Impact Partnership**

Systems Aligned in Learning (SAIL) is also addressing all four bold goals. With Luthercare for Kids as its lead agency, other Community Impact

Partners are COBYS Family Services, Fizika Group, Lancaster County Council of Churches, the Library System of Lancaster County and Pennsylvania Early Learning Keys to Quality.

With the wind at their back, SAIL will increase the quality of child care for at-risk youngsters by taking a specially equipped van directly to home-based child care centers across the county. This will enable them to offer many of the same educational resources as quality, center-based preschools.

The van will also allow them to bring nutritional food to low-income families, help them find “Wheels to Work” and open doors for post-secondary credentials for the providers themselves.



**“The way we’ve done things in the past won’t work.** This new opportunity to work together and see all children as ‘our children’ and watch them succeed is the way to make Lancaster a better city.”

— **Shayne Meadows, Lancaster-South Connections Community Impact Partnership**

Lancaster-South Connections Community Impact Partnership will serve as the frontline connection for low-income families

needing support, education and care. Working closely with Washington Elementary School in Lancaster City, this partnership will work to make sure children are ready for kindergarten, that families move out of poverty and that all have access to quality physical, dental and mental health care.

With Boys & Girls Club as its lead agency, other partners include ASSETS Lancaster, Exit Lancaster, Lancaster City Alliance, Lancaster Community Safety Coalition, Lancaster EMS (LEMSA), Lancaster Housing Opportunity Partnership (LHOP), The Mix at Arbor Place, School District of Lancaster and SouthEast Lancaster Health Services.



**“Already there are success stories.** And it’s the people themselves who are responsible, with the help of nonprofits, their neighbors, the business community and everyone out there who have come together to give them the pieces of the puzzle they need.”

— **Dan Jurman, Pathways Out of Poverty Community Impact Partnership**

Identifying the puzzle pieces, pinpointing barriers to success and leading

the way is a multi-functional alliance led by Community Action Program of Lancaster County (CAP).

Other Community Impact Partners are Central Pennsylvania Food Bank/Hunger-Free Lancaster County, Columbia Presbyterian Church, Community Life Network, First United Methodist Church, Habitat for Humanity, Lancaster County Council of Churches, Millersville University, Tabor Community Services and Thaddeus Stevens College of Technology.

This partnership will provide guidance and direction to low-income individuals and families as they permanently chart their pathways out of poverty.



**“This year our free VITA tax services returned \$7.7 million** to the families and individuals who needed it most.”

— **Ezra Rothman, United Way’s Volunteer Income Tax Assistance**

VITA provides free tax preparation services to individuals and families earning less than \$50,000. In 2015, VITA infused financial stability into the lives of over 6,000 taxpayers.

All told, the hard work of 200 specially trained volunteers returned to those who needed it most \$7.7 million in tax refunds. In addition, our VITA services saved these taxpayers \$1.2 million in tax preparation fees. In 2016 these services will be further targeted and integrated into the work of the 17 new Community Impact Partnerships.

# WORK UNITED

GET  
HELP



PENNSYLVANIA  
**2-1-1**  
East — Powered by United Way

**Call 2-1-1**  
Lancaster County's  
Community Help Line

— 24 HOURS A DAY —  
— 365 DAYS A YEAR —

## GET HELP! CALL 2-1-1

***"It's United Way's free, confidential, non-emergency information and referral to community resources."***

— Toni Gainer, United Way's 2-1-1 Information & Referral Service

Facing some of life's most pressing challenges and not sure where to turn? Call 2-1-1. United Way 2-1-1 is a free, confidential source of information and referral to a variety of community resources.

Serving all of Lancaster County, this non-emergency help is available 24 hours a day, seven days a week. Last year, 2-1-1 connected 30,000 county residents with the help they needed. If you, a family member or a workmate need to get connected with the wealth of available help, call 2-1-1 or 855-501-6785, or visit [www.UWLanc.org/211](http://www.UWLanc.org/211).

2-1-1 is also a great resource to connect with local organizations seeking donations and volunteers. It's all part of United Way's vital commitment to "Give Help and Get Help."



## VOLUNTEER INCOME TAX ASSISTANCE (VITA)

Since 2007, United Way of Lancaster County's Volunteer Income Tax Assistance (VITA) program has been putting hard-earned money back into the pockets of low- to moderate-income wage earners through tax refunds and tax credits. Services are offered at 19 different sites around Lancaster County.

To learn more, visit:  
[www.UWLanc.org/VITA](http://www.UWLanc.org/VITA)



## SAVE UP TO 75 PERCENT ON PRESCRIPTION COSTS!

Cost should never prevent you from getting medicines you or your family need. United Way is proud to bring prescription savings to everyone through the FamilyWise® Prescription Savings Card. Last year, FamilyWise saved Lancaster County families more than \$160,000 at their local pharmacies.

We'll help give you access to the medicine, community support and information you need. There's no registration required, and the FamilyWise card is accepted at more than 60,000 pharmacies. For more information, visit [www.FamilyWise.org](http://www.FamilyWise.org). You can also download the free FamilyWise app on your Android phone or iPhone.



# VOLUNTEER UNITED



## GIVE HELP! VOLUNTEER CENTER

United Way's Volunteer Center is your one-stop source for information on a variety of opportunities for you to give back to your community. Whether you're looking for ways that school students can get involved or seeking opportunities for your workforce team, group or organization, we have places around the county that need you. Be one of more than 15,000 United Way volunteers who give back to our community every year. Download our Opportunities for Caring Guide: [www.UWLanc.org/OpportunitiesForCaring](http://www.UWLanc.org/OpportunitiesForCaring)

To learn more, visit [www.UWLanc.org/VolunteerCenter](http://www.UWLanc.org/VolunteerCenter), email [Volunteer@UWLanc.org](mailto:Volunteer@UWLanc.org) or call 717-824-8122.

## GET CONNECTED

Get Connected! It's powered by United Way!

Does your organization need volunteers? We'd be happy to include your positions on our Volunteer Center website.

Visit [www.UWLanc.org/GetConnected](http://www.UWLanc.org/GetConnected) today!



## We're here for you.

*Lancaster Regional and Heart of Lancaster Regional Medical Centers proudly support the United Way of Lancaster County.*

We strive to serve the communities in which we live and work through compassionate care and tireless dedication to the well-being of our neighbors. We certainly hope you never need us. But if you do, we are here to help heal you with the compassion you deserve and the expertise you expect.



Lancaster Regional and Heart of Lancaster Regional Medical Centers are directly or indirectly owned by a partnership that proudly includes physician owners, including certain members of the hospitals medical staffs.



Proud to support the United Way in its mission to build a stronger Lancaster County.



Risk Management | Insurance | Health Benefits | TPA | Wealth Management | HR  
717.397.9600 | [murrayins.com](http://murrayins.com)

# INVEST UNITED

## PILLAR SOCIETY

The Pillar Society salutes organizations that have contributed \$100,000 or more through combined employee and corporate contributions.

- Alcoa Mill Products
- Armstrong Foundation
- Armstrong World Industries, Inc.
- Cargill Cocoa & Chocolate
- Fulton Financial Corporation/Fulton Bank
- The Hershey Company
- The High Companies
- Johnson & Johnson Consumer Products
- Kellogg Company
- Lancaster General Health
- LNP Media Group, Inc.
- Steinman Foundation
- New Holland North America
- PPL Electric Utilities
- RR Donnelley
- Susquehanna Bancshares, Inc./Susquehanna Bank

## LABOR SUPPORT AWARDS

United Way is proud to have a longstanding partnership with organized labor. Working together, we ensure that working families have access to a wide range of vital community services.

AFSCME Local 1758	GMP Local 36	PSEA
AFSCME Local 1896	GMP Local 287	PSSU Local 668*
AFSCME 2156	GMP Local 376	Sheetmetal Local 19
AFSCME Local 2421	IAM Lodge 2367	Teamsters Local 771
AFSCME Local 2540	IBEW Local 743	USW Local 285
APSCUF – Millersville University	IBEW Local 1600	USW Local 285 Unit 441*
ATU Local 1241	IBEW Local 1602	USW Local 670*
BCTGM Local 374	IBEW Local 1666	USW Local 1035
BCTGM Local 387	Mailhandlers Local 308	
BCTGM Local 464	NALC Local 273	<i>*Indicates unions that also sponsored Loaned Labor Representatives for the 2014-2015 campaign.</i>
CWA Local 13000	Plumbers & Pipefitters Local 520	
Firefighters Local 319	Postal Workers Local 95	

## CIRCLE OF HONOR

The Circle of Honor was established in 2011 to applaud the businesses that truly support the mission of United Way. Inclusion in the Circle of Honor recognizes the quality of a company's workplace campaign, employee support of and participation in United Way activities and other non-monetary contributions. The businesses that receive this honor are the star supporters of United Way of Lancaster County and champions of the mission to GIVE, ADVOCATE, VOLUNTEER and LIVE UNITED.

Alcoa Mill Products	Lancaster Regional Medical Center & Heart of Lancaster
Armstrong World Industries, Inc.	Regional Medical Center
August Mack Environmental, Inc.	Literacy Council of Lancaster-Lebanon
Barley Snyder	Lititz Mutual Insurance Company
Cargill Cocoa & Chocolate	LNP Media Group, Inc.
Certified Carpet	McNees Wallace & Nurick LLC
Comcast Cable	McNeil Consumer Pharmaceuticals Co.
Community Action Program of Lancaster County	Morgan Stanley
Community Services of Organized Labor	Murray Securus
Conestoga Valley School District	Pepperidge Farm
County of Lancaster	Precision Medical Products, Inc.
Donegal Insurance Group	Reinsel Kuntz Leshner LLP
Elizabethtown Child Care Center	Rhoads Energy Corporation
Eurofins Lancaster Laboratories	RR Donnelley
Franklin & Marshall College	School District of Lancaster
Fulton Bank	Schreiber Pediatric Rehab Center
The Hershey Company	Smilebuilderz
The High Companies	SouthEast Lancaster Health Services
Irex Corporation	Stauffers of Kissel Hill
ITT Engineered Valves, LLC	UGI Utilities, Inc.
Johnson & Johnson Consumer Products	United Parcel Service
The Lancaster Chamber of Commerce & Industry	United Way of Lancaster County
LCSWMA	WGAL 8
Lancaster General Health	Wohlsen Construction Company

## LEGACY SOCIETY

The Legacy Society recognizes United Way of Lancaster County investors who have perpetuated their giving past their lifetimes. Their planned gifts "pay it forward," leaving a legacy that will continue to improve lives across Lancaster County.

There are a variety of ways to include United Way in your will or estate plans. Some of the most popular include:

- Naming United Way of Lancaster County as a beneficiary in your will.
- Making an outright gift of cash, appreciated stock or real estate.
- Naming United Way as the beneficiary of a retirement plan.
- Naming United Way as the beneficiary of an existing or new life insurance policy.
- Naming United Way as beneficiary of a split interest gift.
- Making a gift through a charitable gift annuity.

We invite you to consider making United Way a part of your legacy. To learn more, please contact our gift planning department at 717-824-8131.

### Gifts Received

Lawrence Arnold Trust  
Victor L. Baer Trust  
Estate of George P. Bolbach  
Estate of Cora M. Burkhardt  
Estate of Betty J. Cannon  
Estate of John C. Carter  
Estate of Dorothy R. Chapman  
Beatrice M. Clopp Trust  
Estate of Walter L. Connor  
Estate of Genevieve Diller  
Susan C. Eckert Fund  
Estate of Maude M. Eshelman  
Paul B. & Maude M. Eshelman Trust  
Paul B. Eshelman Trust  
Estate of Doris Flick

Gladys L. Good Trust  
Estate of Wyona R. Graver  
Estate of Dorothy Ann Haley  
Estate of Arthur K. & Florence M. Hammel  
Elmer E. & Virginia M. Hansell Trust  
Estate of Rodney W. Harnish  
Estate of James J. High  
In memory of J. Leroy & Pauline E. Hoeltzel  
Estate of Charles B. Hull III  
Estate of Edmund C. Johnson  
Estate of William G. Johnstone Jr.  
Estate of Mary A. Kauffman  
John C. Kirchner Memorial Fund  
Estate of Robert E. Knoll

Estate of Herman R. Kramm  
Estate of Helen E. Larson  
Gilda M. Markoski Fund  
Estate of Virginia M. Mehler  
Margaret S. Moss  
Reuel R. Rupp & Mayanna E. Rupp Trust  
Mary Sachs Trust  
Estate of Verna A. Scott  
Estate of Helen A. Shaub  
Alvin W. Shenk Trust  
Sol J. Slotkin Trust  
Estate of Keith Spalding  
Estate of Lewis H. Wessinger  
Elva Boyd Wilson  
Estate of Helen M. Witmyer

### Letters of Intent

Shaun Balani  
Jay & Pam Bucher  
Dr. J. Frederick & Theodora M. Chairsell  
Tony & Sherry Chivinski  
Robert J. & Janice A. Cook  
Susan & Jerry Eckert  
Deborah R. Gerlach  
Mary & John Gooding  
Edward A. Hauck & Stefanie B. Valar  
Anita Hess  
Carol D. Hess  
Ken & Louise Hess  
David E. Hosler  
Suzette & Richard Kneedler



Walt & Fran Legenstein  
Richard Houghton Livesey III  
Mrs. Mae F. Livesey  
Iris S. MacRae  
Constanta Macailla  
Charles H. Miller  
Joe & Anna Molony  
Ronald & Julie Myer  
Walter D. & Patricia J. Otto  
James E. & Mary E. Shreiner  
Sue Suter  
Ann & Ron Vail  
Rick & Colleen Watson

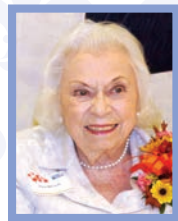
*We apologize if we missed anyone.*

## TOCQUEVILLE SOCIETY

Tocqueville Society members are among the United Way movement's most longstanding and engaged partners. Nationally, members collectively invest more than half a billion dollars in community transformation. Locally, our members drive nearly \$1 million into support of bold change here in Lancaster County.

### La Table Ronde d'un Million de Dollars

\$1,000,000 and above



Elva Boyd Wilson  
First member of the  
Million Dollar Roundtable

### Ordre d'Egalité

\$50,000 - \$74,999

Michael Lockhart

### Ordre de Liberté

\$25,000 - \$49,999

Matthew & Lori Espe

David R. & Tamela J. Fassnacht

Roger & Grace Moyer

Judy & Roger Sandt

### Membres de la Société

\$10,000 - \$25,999

William W. & Susan C. Adams

Anonymous Donor

Lyndell & Shannon Bair

Tom & Betty Beeman

Dick & Barb Blakinger

Sally Buckwalter

Nevin & Kathleen Cooley

Susan & Jerry Eckert

Bob & Patty Ford

Phil & Pati Frey

Wendell L. Funk, MD

Joan & Henry H. Gibbel

Jerry & Monika Glenn

Victor D. Grizzle

John K. Herr III & M. Diane Koken

S. Dale & Sadie High

Colette & Jim Hipolit

Donald & Boots Horn

David & Jean Hosler

Joanne M. Judge & Rick Oppenheimer

Tom & Sharon Kennedy

Stephen & Veronica Kepchar

Walt & Fran Legenstein

Donald & Susan Maier

Tom & Allison Mangas

Mr. & Mrs. Charles F. Milner Jr.

Mrs. Milton K. Morgan, Jr.

Terence & Susan O'Day

Joan & Wayne Paxton

Marc & Carol Phillips

Doug & Laurie Rebert

Jason & Melissa Reiman

William J. & Selina A. Reuter

Joseph & Elizabeth Roda

Rick & Jessica Rodgers

Dr. Robert L. & Anna M. Roschel

Sue Savage & Fred Engle

Dave & Anne Marie Schulz

Steve & Susan Senkowski

Jeremy Shackelford

Mike & Andrea Shirk

James E. & Mary E. Shreiner

Ralph & Linda Simpson

Pete & Kit Slaugh

E. Follin Smith & Dr. John Gerdy

Stephen & Patricia Stockwell

Sue Suter

John Swanson

Marlin & Doris Thomas

Kevin & Denise Walling

Paul W. & Judy S. Ware

George & Nancy Weaver

Mr. & Mrs. Isaac H. Weaver

Mike & Sandy Wege

*We apologize if we missed anyone.*

## WOMEN'S LEADERSHIP COUNCIL

In 2014, United Way of Lancaster County celebrated a decade of women's inspired philanthropy. Since its formation, more than 100 members have banded together to invest more than \$1 million and touch the lives of thousands of women and children.

Susan C. Adams  
Susan Baldrige  
Ann B. Barshinger  
Beverly H. Breniser  
Kay Burky  
Susan G. Burlingame  
Patricia K. Burnley  
Jennifer L. Craighead  
Gloria E. Degler  
Susanne H. Dombrowski  
Susan C. Eckert  
Susan L. Engle  
Tamela J. Fassnacht  
Nancy D. Fisher  
Susan J. Garofola  
Sandy Garrison  
Michelle S. Gibbons  
Katherine Granbois  
Karen F. Heinle  
M. Louise Hess

Sadie Horst High  
Wendy G. Jarrett  
Dr. Ann S. Keim  
M. Diane Koken  
Joanne B. Ladley  
Fran E. Legenstein  
Kimberly A. Lemon  
Dr. Lynda Limpert  
Michelle M. McCann  
Pamela A. McDonald  
Julie S. McNamara  
Theresa Mongiovi  
Grace E. Moyer  
Kimberly Daly Nobbs  
Bethany A. Novis  
Joan K. Paxton  
Dr. Carol Y. Phillips  
Mary W. Renner  
Barbara Hough Roda  
Elizabeth Roda

Sheila W. Roseman  
Joyce M. Saeger  
Susan E. Savage  
Susan M. Senkowski  
Sharon M. Sherban  
Deidre W. Simmons  
Linda A. Simpson  
Robin D. Stauffer  
Beverly R. Steinman  
Patricia T. Stockwell  
Eleanor H. Strayer  
Sue Suter  
Carol A. Szutowicz  
Ann Treier  
Alison B. van Harskamp  
Kris Weeks  
Elva Boyd Wilson

*We apologize if we missed anyone.*

## EMERGING LEADERS SOCIETY

Are you or your partner 40 or younger?  
Are you making a household gift to United Way of \$500 or more?  
If so, you're automatically a member of our Emerging Leaders Society!

Members of our Emerging Leaders Society are recognized in our annual Leadership Giving salute. Members are also invited to our annual Leadership Giving reception. We hope you'll consider becoming a part of this up-and-coming group of leadership investors.

Anonymous (3)  
Mrs. Jennifer R. Aukamp  
Brett P. Calabretta  
Yolanda L. Colon  
Steve Denlinger & Elizabeth Landis  
Mr. Eric C. Dionysius  
Mr. & Mrs. Cody M. Dombach  
Eric E. Eckman  
Keith C. Enochs  
David & Jennifer Freedman  
Rosemary O. Hartman  
Ted & Trish Houser  
Kirsten H. Johnsen-Martin  
Christian Johnson  
Jennifer Laudeman & Michael Laudeman

Jason A. Leisure  
Dan & Kristin Marshall  
Lincoln Milner  
Melissa L. Molina  
Neil Parker  
Dr. James A. Probolus  
Kevin Quill  
Shannon M. Rynier  
Gregory S. Scheuchenzuber  
Allison E. Schlegelmilch  
Mike & Stella Stetson  
Kimberly A. Sheehan  
Mrs. Kelly L. Strunk  
Melissa D. Wissler  
Dr. & Mrs. Nikitas J. Zervanos

*We apologize if we missed anyone.*



## LEADERSHIP SOCIETY

Leadership Society investors lay the foundation to make great change happen at a leadership level. Choosing to partner with United Way, these community-minded investors demonstrate a level of commitment that sets an example for others. Together, these Leadership Society donors invested nearly \$1.4 million to strengthen our community.

### DIAMOND LEADERS

\$7,500-\$9,999

Tom & Susan Baldrige  
Mrs. Bernice K. Gerhart  
James H. & Joan L. Moss  
John & Pam Stoner

### PLATINUM LEADERS

\$5,000-\$7,499

Mark & Stephanie Anderson  
Anonymous (3)  
Jan & Tom Bergen  
John T. Bertz  
Kathryn & Steve Borkgren  
Scott R. & Kay E. Burky  
Chad M. Clabaugh  
Dave & Sharon Cookson  
Jennifer L. Craighead  
Earl A. & Christina M. Furman  
Scott & Lynn Fyfe  
Kathy & Mike Granbois  
Randall Grossman  
Dr. & Mrs. Joseph Hennessey  
Stephen & Veronica Kepchar  
Mr. & Mrs. James M. Mack  
Ed & Michelle Monborne  
Karen M. Mooney  
Bethany & Mark Novis  
Anthony J. & Deborah L. Purcell  
Ellen & Paul Romano  
Jeffrey & Elizabeth Ross  
Andrea & John Schmid  
Mr. Keith A. Stauffer  
Summit Advisory

### GOLD LEADERS

\$2,500-\$4,999

Kimberly VanEsveld Adams  
Anonymous (5)  
Dr. Philip Bayliss  
Nelson & Sandy Behmer  
Anne L. & Robert K. Bowman  
Alan & Joann Brayman  
Jay Bucher  
Kevin & Stacey Burns  
Doug & Tammy Byers  
Douglas & Karyn Cadle  
Chip & Rebecca Cargas  
Jerry & Karen Chase  
Sherry & Tony Chivinski  
Andy & Tracy Cutler  
Mr. Ricky L. Deamer  
Susan & Doug Engle  
Doug & Nancy Fisher  
Mark & Patty Fitzgerald  
Glenn Forman  
Darren & Katrina Fritz  
David A. Fuge  
Robert & Shelly Garman  
Susan J. Garofola  
Richard Gates  
Tom & Jennifer Goldbach  
Ms. Susan Green  
Mr. Robert F. Groff Jr.  
Josh & Catherine Hauser  
Frederick & Karen Heinle  
Mr. Thomas Henry  
J. Robert & Nancy Hess  
Kenneth & Louise Hess  
Caroline & Paul Hoffer  
Anita & John Humphries  
Bjork Hupfeld  
Mr. Diego F. Isaza  
Ms. Nicole M. Johnson

Thomas J. Jordan IV &  
Dr. Valerie L. Jordan  
Ron & Denise Kennedy  
Mr. & Mrs. Charles Kereczman  
Kathy & Dan Kravitz  
Bonnie & Steve Kraybill  
Greg & Carol Lefever  
Kim Lemon  
Pam & Kirk Liddell  
Bruce & Lynda Limpert  
Diane J. Lorello  
Robert & Linda Macina  
Mr. & Mrs. Arthur K. Mann  
Jean A. Martin  
Donald M. & M. Michelle McCann  
Vicki & Mike McCarty  
Andrew B. McCormick  
Keith & Maria McCutcheon  
Stephen & Mary McNamara  
William A. Mehler Jr.  
Pat & Steve Meyers  
Phillip & Gretchen Miller  
Bob & Sherry Moore  
Paul & Jane Mueller  
Stephen Murray  
Curt & Kim Myers  
Krystyna & Peter Oleske  
Stephen T. & Laura S. Olin  
Brenda & Eric Olson  
Karen Flaherty-Oxler  
Andy & Keri Paladino  
Art & Marcia Pangburn  
Bonnie & Dave Pelliccione  
Scott P. Pellman  
Eileen & John Quinn  
Beth & Dominic Rice  
Timothy & Jennifer Riley  
Craig & Dianne Roda  
Ms. Grace Rodriguez-Colon  
Joyce M. & John H. Saeger  
Michael & Eileen Snyder  
Bill & Laurie Stadden  
Mark & Andrea Stanley  
Mr. Eric R. Stauffer &  
Carolyn S. Stauffer  
Bob & Robin Stauffer  
Mr. & Mrs. Daniel R. Stolzer  
Chester & Suzanne Szczepanski  
Roger D. K. & Anna L. Thomas  
John & Ann Treier  
Alison & John van Harskamp  
Elizabeth Masciale-Walmer &  
Michael Walmer  
Philip R. Wenger &  
Steven T. Dinnocenti  
Michael Winters & Kristin Wiest  
Lynn & Ed Wise Jr.  
Bruce & Helen Wolstoncroft  
Linda J. Wright  
Bryan & Wendy Wurscher  
Stacey & Robert Youcis  
The Young Family  
Andrew J. Zulkosky

### SILVER LEADERS

\$1,500-\$2,499

Dennis W. Adair  
Charlotte & Michael Anderson  
Anonymous (16)  
Deborah P. Arcoleo  
Joseph H. Banzhof  
Douglas & Tami Barton  
Carolyn J. Beam  
Mr. Carl B. Bear  
Gregory Beaudoin  
Steve & Sue Becker

Brenda J. Becker  
Bob & Emy Belser  
Susan Bergen  
Barbara A. Beyer  
Larry Bieber  
Kevin & Evelyn Biedermann  
Dan & Cindy Blakinger  
Dave & Linda Boomer  
Beth Y. Bowers  
Joseph T. Breneman II  
Bev Breniser  
Mr. & Mrs. Richard O. Brown  
Scott E. Buesking  
Kevin & Laura Burke  
John & Cappy Bush  
Peter & Carol Caddick  
Don & Judy Carter  
Dr. J. Frederick &  
Theodora M. Chairsell  
Francine & William G. Childs  
Judith G. Cook  
Paul & Ellen Corr  
Margaret Costella & Russell  
Strickland  
Forest & Kelly Crigler  
Michael & Kelly DeBerdine  
Mr. Jason Dececco  
Steve & Patti Deck  
Michael & Lori DePorter  
Bill & Noreen Dishart  
Rob & Abby Dodds  
Mr. David J. Donnelly  
Stephen Dudak  
Mr. James D. Eatherton  
Mrs. Sharron T. Eckel  
Colette & Steve Evans  
David & Denise Faust  
Todd & Rita Foster  
Adrienne & Amir Friedman  
Tim & Jennifer Gaalswyk  
Sandy Garrison  
Thomas & Elizabeth Gates  
Bonnie Glover  
Rick A. Graver  
Ms. Amy Gretz  
Jane & Hal Gueldner  
Neil Gussman & Annalisa Crannell  
Sharon & Brenton Hake  
Ms. Amanda K. Hastings  
Ms. Mary Heiser  
Dennis & Shirley Heisey  
Rick & Mary Heisey  
Pete & Rachel Higgins  
Steven High  
Thomas Himmelsbach  
Yon & Nichole Hinkle  
Joe & Aislin Hobson  
Melissa Hoffman  
Mr. & Mrs. Mark A. Hooper  
Roger & Kathy Huggard  
Judy A. Hughes  
Steven & Kathleen Hynicka  
Michelle L. Ingham  
JoAnn & David Irwin  
Dan & Wendy Jarrett  
Kevin Johnson Family  
Ken & Terry Kehrer  
Dave & Carol Keller  
Mr. Scott J. Kimmel &  
Mrs. Wendy R. Kimmel  
Bill & Mary Ellen Kopetz  
Bert & Ann Kramer  
Deborah A. Kressig  
Scott & Leslie Kulis  
Mr. & Mrs. David W. Laubach  
Adam & Peggy Lawrence  
Marcia & Larry Lefever

Joseph Lo Curto  
Phil & Betty Loht  
Michael J. Lorelli  
Gladys Malone  
Mr. Thomas Malone  
Aaron & Tracy Marines  
Salvatore F. Marone  
Dr. & Mrs. Tony Mastropietro  
Margaret K. Matsuoka  
John & Melissa Mattilio  
James & Susan Maurer  
James McCary  
Pam McDonald  
Ray McGlew  
Anne & Barney McGrann  
Tom & Kirsten McKinney  
Scott B. McNelis  
Emma McTague  
Bob & Linda Miller  
Michael A. Miller  
Howard & Mary Miskey  
Russ & Susan Mitchell  
Theresa Mongiovi  
Sharon & Jim Murphy  
Nancy & Craig Nadig  
Crystal & David Natan  
Leo L. Newcomer III  
Kim Daly Nobbs  
Randy & Phyllis Patterson  
Lynn & Timothy Peters  
Elwood & Lori Pickell  
Francis Pine  
Steve & Kim Poole  
Melvin & Monica Pullen  
Beth S. Quickel  
Frances & Eric Rebert  
David & Pam Reist  
Jeff & Barb Renninger  
John B. Renninger  
Dennis & Sue Rhoades  
Mr. & Mrs. Paul Richer II  
Karen L. Rick  
Clint M. Rider & Deanna L. Rider  
Donn & Terri Ridley  
Scott D. Rigney  
Rebecca W. Rinehart  
DeLayne Lavenia Robinson  
Glenn & Amy Roe  
Cliff & Barb Royer  
Amy L. Sahn  
R. Clair & Doris Sauder  
Bev & John Schantz  
Carol & Phil Schonour  
John F. Seidle  
Mr. Shawn S. Serfass  
Christine Shoemaker &  
Jennifer DeWalt  
Felicia & Bob Shoemaker  
Katherine Shope  
Robert A. Siever  
Craig J. Sikora  
Dr. Mary Grace Simcox  
Charles & Angela Simms  
Steven B. Smith  
Sheila L. Snyder  
Dan & Georgia Steinbacher  
Jeffrey & Shellie Sterner  
Mr. James F. Stewart  
Carl J. Strikwerda &  
Gail M. Bossenga  
Elizabeth K. Stromsky  
Bruce & Leslie Tahsler  
Bernadette Taylor & Matt Early  
Dr. Norman & Eleanor Taylor  
Donald & Melaine Totaro  
MaryJo Touchinsky  
David & Peggy Truesdale

Paul & Sue Trunk  
Michele & Harry Turner  
Daniel & Elizabeth Valen  
Thomas J. Waleski  
Joanne H. Walmer  
Glenn & Gail Walz  
James Warner & Kerry Sacco  
Adrienne & Eugene Washington  
Daniel Watje  
Michael & Kerri Weaver  
Debby Huber Wells  
E. Philip & Kim Wenger  
Joan & Clifford Wengert  
Tim & Cindy Werstler  
Mrs. Cindy M. Whitehead  
Sheri & Allen W. Whittemore  
Mr. Richard H. Williams  
Nathan & Michelle Wingert  
Mr. David Wright  
Andrew B. Yehl  
Tom & Barb Yingling  
Susan & Edward Young  
Jeffrey Youngquist  
Mark & Teresa Zettlemoyer

### BRONZE LEADERS

\$1,000-\$1,499

Mr. Arnold Ables  
Andy & Patti Abrams  
Susan Ammons  
Mr. Matthew J. Andersen  
Anonymous (44)  
Kean & Debora Anspach  
Amy & Jeffrey Artz  
Eric & Laura Athey  
Don & Thelma Aurand  
Linda & Dennis Baer  
Richard L. Bailey  
James & Kristi Baker  
Shaun & Menka Balani  
Jeff & Melissa Bankert  
David E. Barber  
Mr. David Barclay  
Mr. Harry G. Barnes  
Ann B. Barshinger  
Angela Bartoch  
John & Maureen Bassett  
Mrs. Margaret L. Bates  
Susan M. Bator  
Stephen Baumann  
Mr. & Mrs. Jeffery Beck  
Mr. David G. Beiler  
Kathy Bell  
Dr. & Mrs. Paul Belser  
David & Deborah Bendit  
Mrs. Kimberlie R. Bennett  
Mark R. Bennett  
Rick & Cheryl Bennett  
Dave & Betty Berndt  
Jose A. Betancourt-Alicea  
Jim & Karen Biondolillo  
Jessie Bixler  
Steven B. Smith  
Robert & Reba Bolinger  
Mr. James M. Bollinger  
Cale & Anna Boriack  
Mr. & Mrs. James W. Bounds  
Christine Bouril  
The Box Family  
Ryan Boyd  
David A. Breniser  
Mr. & Mrs. Michael D. Brenner  
Bridy Family  
Lela J. Bryant  
Bob & Kathy Bucher  
Whit Buckwalter

Raymond A. Bures & Jackolyn M. Brinkman  
 Susan G. Burlingame  
 Patricia K. Burnley  
 David & Corinne Bush  
 Mr. Coleman D. Butterworth  
 Timothy & Kristine Butz  
 Steven & Connie Buzzard  
 Christie Byerly  
 Mr. & Mrs. Edward A. Byrd  
 Budd & Connie Callman  
 Ted & Carolyn Carlson  
 Susan S. Carson  
 Mr. Dino J. Capers  
 Christopher & Meagan Cassel  
 James & Denise Cassel  
 Mrs. Hannah R. Chacon  
 James & Megan Chadwick  
 Gary C. Chaney  
 Wayne & Angel Chappel  
 Alyssa Chasarik  
 Betsy Chivinski  
 Sonia Christmas  
 Crystal Clark  
 Paul & Karen Clouser  
 Mr. Jose Colon-Cartegena  
 Conestoga Oral Surgery  
 Kristina & Harry Connell III  
 Paul & Sharon Conslato  
 Mr. Andrew Michael Costello  
 Pat & Donna Cowan  
 John & Dr. Cynthia Cox  
 Matthew & Brianne Cramer  
 Huns & Linda Dang  
 Bret & Pam Daniels  
 Jim & Pam Daniels  
 Michael E. Daniels  
 Frank T. Dano III  
 Joan & Tom Dautrich  
 Mr. Edward Davis  
 LuAnn Davis-Jindela & Joe Jindela  
 Mr. Meka DeCoteau  
 Gloria E. Degler, CFP, CDFA  
 Dr. Kurt M. DeGoede  
 Ms. Susan E. Delgiorno-Ream  
 Donald E. Denlinger  
 Douglas R. Denlinger  
 Michael G. Depanfilis  
 James & Ruth Devenney  
 Sara Diffenbach  
 Kathy & Ed Dinkel  
 Ernie & Donna Doerschuk  
 Paula Dombek  
 Susanne H. Dombrowski  
 Sean & Rebecca Donnelly  
 Dawn & Jeff Donough  
 Mr. & Mrs. William J. Donovan Jr.  
 Jeffery L. & Jane I. Druce  
 G. Yale & Jane N. Eastman  
 Lauren Eby  
 Jeannette & Geoffrey Eddowes  
 Mr. & Mrs. Todd K. Ellis  
 Ms. Christine Emenheiser  
 James & Julie Englert  
 Frank Enriquez  
 Mr. Mark Esterbrook & Dr. Beth Esterbrook  
 Ms. Susan Irene Evans  
 Mr. Steve K. Fahs  
 John S. Falconer  
 Dan & Claudia Falvey  
 Norma J. Ferdinand  
 Mr. James L. Filous  
 John & Tina Finley  
 Scott & Laura Fiore  
 Jessica Fisher  
 Tracy & Kimberly Fletcher  
 Mr. Timothy P. Flynn  
 T. Raymond Foley, MD  
 Beth & Mitchell Forry  
 Francis S. Fox  
 Mr. & Mrs. Robert E. Fraile  
 Frederick A. Freed  
 D. Scott Freed  
 Paul W. Frick  
 Glenn & Sonhui Frill  
 Charles & Julia Fuller

Jean & Jim Fullerton  
 Jeff & Toni Gainer  
 Mario Gallelo  
 Stephen & Michelle Gallo  
 Mark C. Gangl  
 Jay & Karen Garber  
 Scott & Sheri Garman  
 Steven J. Geisenberger & Christine T. Sable  
 Mr. Lloyd L. Gentzler Jr.  
 Ms. Dian C. Gentzler  
 Frank & Margie Gerhardt  
 Drs. Alexandra Gibas & Paul Casale  
 Jolyn & Henry R. Gibbel  
 Mike & Michelle Gibbons  
 Michel & Karen Gibeault  
 Kevin Gilbert  
 Steve & Beth Gingrich  
 Dr. Stanley & Susan Godshall  
 Todd Gohn  
 Mr. & Mrs. Donald G. Goldstrom  
 Linford Good  
 Darryl & Dominique Gordon  
 Ed & Jean Gordon  
 Linda Gort & Lenny Walton  
 Raymond & Kristen Granger  
 Ms. Molly Greenwood  
 Cy & Deb Greenya  
 Jennifer Groff  
 Bud & Nancy Grove  
 Stanton W. Grube  
 Mr. Jeffrey F. Grundhoffer  
 Mr. & Mrs. Kent C. Habecker  
 Doug & Kathy Hall  
 Dennis & Darla Hann  
 Chuck & Mary Hansen  
 Dave Hanson  
 Michael & Ellen Harrington  
 Ms. Bonny A. Harris  
 Mr. Charles B. Hash  
 Ed Hauck & Stefanie Valar  
 Andrea & Brian Heberlein  
 Mr. Patrick H. Hehnly  
 Rebecca S. Hehnly  
 Amy R. Heidel  
 Wes Heidel  
 David & Deborah Heins  
 Ms. Dawn A. Helm  
 Dick & Cindi Hendricks  
 Miguel & Mara Heras  
 Mike & Debbie Herr  
 Anita F. Hess  
 Gregory A. & April Y. High  
 Jon & Erin Hill  
 Elizabeth Hills  
 Joseph & Beth Ann Hinnenkamp  
 Tom & Gila Hodge  
 Danielle J. Hoffer  
 Thomas & Sally Holmes  
 Ms. Carolyn E. Hook  
 David & Barbara Hornberger  
 Kathy Lynn Horne  
 Jeffrey & Alicia Horst  
 Paul Hough  
 Mr. Hobert Howard  
 Jason Huggins  
 Grant W. Hummer  
 Richard W. Humphreys  
 Peter & Barbara Hunsberger  
 Thomas J. Inserra  
 Edward & Maria Jablonski  
 Alan Jacobs  
 Jeffrey A. & Colleen M. Jacobsen  
 Jennifer L. Johnson  
 Robert M. Johnson  
 Parker Jones  
 Andrew & Kara Jones  
 Craig & Kisha Kauffman  
 Ann S. Keim  
 Bill & Ellen Kepler  
 Jeff & Judy Kitsock  
 Ms. Monique Kittle  
 Keith & Nicole Koger  
 Constantine Kondos  
 Mr. Robert M. Krasne  
 Donna & Karl Kreiser  
 Mr. Eric D. Krimmel

Dr. Robert C. Krissinger  
 Charles Kulynych  
 Holly & David Kutz  
 Joanne B. Ladley  
 Wendy & Jay Lance  
 Samantha Larbi  
 Richard A. & Susan J. LaTournous  
 David J. Leaman  
 Mr. Jerry L. Leber  
 Darren & Deb Lechner  
 Don Lee  
 Mr. Gregory A. Lefor  
 Mr. & Mrs. Anthony F. Legenstein  
 Mr. & Mrs. Joseph W. Legenstein  
 Mark & Stephanie Legenstein  
 Bob & Mary Jane Lehman  
 Richard & Elaine Lentine  
 Benton Levensgood  
 Jerald Lind  
 John & Susan Lines  
 Paul & Jan Lipinsky  
 Jonathan & Kelly Litofsky  
 Mr. & Mrs. Mark S. Lloyd  
 Art & Kathy Loewen  
 Mitch & Michelle Long  
 Alan P. Lubas  
 Mr. & Mrs. George A. Ludwig  
 Carl & Julie Lundblad  
 Mr. Scott A. Lutz  
 Mr. & Mrs. Anthony M. Macinanti  
 Brian MacNeal  
 Ms. Erin J. Magee  
 Jill Ranck Maguire  
 Christopher E. Maley  
 Beth & Jim Malkowski  
 Edward Maloney  
 Carl J. Manelius  
 Mr. Alberto Mancini  
 Earl S. Marton  
 Thomas W. & Laurie Martin  
 Craig & Christina Martin  
 Brian & Kathleen Massar  
 Daniel Massey  
 Atty. & Mrs. Paul Maittaini  
 Lauren Maxwell  
 Mr. & Mrs. David A. & Faith C. McCausland  
 Lori McDonald  
 Teresa Baker McElroy  
 Roosevelt & Venia McFadden Jr.  
 Susan McMullen  
 Julie McNamara  
 Ronnie Medlock  
 Mary Jo H. Medura  
 Bruce Meyer  
 Mr. Joseph Milici  
 Aaron & Jacqueline Miller  
 Barry & Debbie Miller  
 Elli Miller  
 Robbie & Derry Miller  
 Edward L. Miller, Esq.  
 Jeff & Gail Miller  
 Mr. Jeffrey D. Miller  
 Ronald & Carol Miller  
 Mr. Stephen K. Minacci  
 Regina Mingle  
 Bruce D. Mitzel  
 Brian T. Moll & Kimberly C. Moll  
 Anna & Joseph T. Molony  
 Al & Pat Morrison  
 Margie Moss  
 Andy Murphy  
 Mr. Paul X. Murphy  
 Ms. Angela Myers  
 Mr. & Mrs. Earl M. Myers  
 Ryan & Cara Neff  
 Mr. Timothy P. Neiss  
 Francine & Herbert Nelson  
 Bob & Mimi Newcomer  
 Don & Betsy Nikolaus  
 Jeff & Lucia Nolan  
 Joseph P. & Marianne S. Nolt  
 Curt Ober  
 Brad & Cindy Olena  
 Ms. Peggy L. Oppe  
 Victor R. Orriola  
 Jim & Marcia Ostrowski

Thomas Overholt, MD  
 Victoria & Richard Paoletti  
 Mr. Kevin P. Parise  
 Chris Parisi  
 John Paul  
 Karen Peiffer  
 Sally Perego  
 Renee Pilotti  
 Ken & Wendy Phillips  
 Mrs. Pauline M. Pittinger  
 Ronald H. Pollock Jr.  
 Dr. Daniel R. Porterfield  
 Darryl Preziosi  
 Joseph & Alicia Pushkar  
 Rick & Vanessa Rankin  
 Mr. & Mrs. Richard Reaser  
 John & Carole Reed  
 Stephanie Reese  
 Mr. Douglas N. Reesor  
 Tad & Mary Renner  
 Mr. Timothy Rhodes  
 Bruce & Andrea Riefenstahl  
 Dr. & Mrs. Michael R. Ripchinski  
 Mark & Mary Anne Ritter  
 Mr. Michael Rizor  
 Brad & Denise Roda  
 Faith & Barbara Hough Roda  
 Dennis Roemer  
 Sheila Roseman  
 Frank & Peggy Rosol  
 Mr. & Mrs. Andrew B. Rote  
 Kenneth & Donna Roy  
 Tom Ruckel  
 Don Rugenstein & Family  
 Ron & Carol Runk  
 Bob & Bobbi Rush  
 Dr. & Mrs. Marc Russo  
 Thomas & Georgina Russo  
 Gregory H. Rutter II  
 Mr. Stephan Salvador  
 Tim Sandoe  
 Todd & Angie Sargent  
 Nancine E. Sauer  
 Margaret Saunders  
 Schnell Family  
 Jeanine & Jeff Schreiber  
 Robert L. Schroeder  
 Maria Schulz  
 Ms. Darla J. Schumacher  
 Joel & Lynn Secrest  
 J. & Nicole Seroky  
 Lynn & Mike Shafer  
 Bill & Eileen Shaughnessy  
 Mr. Mark Sheaffer  
 Jane M. Sheckard  
 Richard P. & Ethel M. Sheidy  
 Robert & Diane Shenk  
 Sharon M. Sherban  
 Mr. Mike Shifflet  
 Mr. Richard Shindle  
 Dr. Hilda Shirk  
 Mary Ann Shirk  
 Jennifer Shivery  
 Dr. & Mrs. Leigh S. Shuman  
 Michael & Wendy Shupp  
 Bryan & Carol Simmons  
 Deidre W. Simmons  
 Robert & Marylou Simons  
 Smilebuilderz  
 Chuck Smith  
 Mr. Gregory L. Smith  
 Philip & Erin Smith  
 Kevin & Wendy Snelbaker  
 Mr. Joseph L. Sofia  
 Tom & Michele Souders  
 Mr. Wayne Southard  
 Kathy Prime Sposito  
 Christine Stabler, MD  
 Donald G. Stafford  
 Amy Stauffer  
 Miss Beverly R. Steinman  
 Paul C. Story  
 Eleanor H. Strayer  
 James & Victoria Stuccio  
 Diane & Ed Supple  
 Daniel L. Sweigart  
 Carol Szutowicz

Mr. Allen E. Tate  
 Mr. Sean Teaman  
 James H. & Judy L. Thomas  
 Bernays & Sharon Thurston  
 TJ & Warren Titcomb  
 Stephen Trapnell  
 Kay & Bob Troxell  
 Mr. Maris K. Tshudy  
 Robert & Shirley Urban Jr.  
 Hugo & Marieke Van Der Goes  
 Jennifer Velencia  
 Frederick & Marilyn Vos  
 Robert & Genise Wade  
 Mr. Steven A. Walmer & Mrs. Patricia Walmer  
 Eric Warfel  
 Sherry & Jerry Watson  
 Mr. D. Michael Weaver  
 Jason Weber  
 Mrs. Diane C. Weber  
 Ms. Joan Weiner  
 Thomas Welk  
 Clifford & Carol Wenger  
 Clarence W. Wenger  
 Eric & Kristin Wenger  
 Nancy Wenger  
 Peter & Robin Wengrenovich  
 Dr. Henry S. Wentz  
 Lars & Amy White  
 Chuck & Dianne White  
 Michele Whitley  
 Douglas & Erika Wilkinson  
 Ms. Tracy L. Williams  
 Mr. Jeffrey G. Williamson  
 Deborah & Doug Willwerth  
 Susan J. Wilson  
 Mr. & Mrs. William J. Wimer  
 Troy & Cindy Wingenroth  
 Beverly A. Wise  
 Phyllis Witmer  
 Kelly Wolfe  
 Gary & Beth Yoder  
 Rodney Yoder  
 Mr. & Mrs. Harry B. Yost  
 Cynthia L. Young  
 Pam & Mike Yuninger  
 Scott & Holly Zieber  
 Mark & Mary Zimmerman  
 Shane Zimmerman & Ginny Zimmerman  
 Ed & Sonya Zook

*We apologize if we missed anyone.*

## FOUNDATIONS

Armstrong Foundation  
 William & Jemima Brossman  
 Charitable Foundation  
 Ferree Foundation  
 High Foundation  
 Lancaster County Community  
 Foundation  
 Norfolk Southern Foundation  
 PNC Foundation  
 The Steinman Foundation  
 Willis & Elsie Shenk Foundation



# STATEMENT OF FINANCIAL POSITION

Year ended June 30, 2014

## ASSETS

<b>CURRENT ASSETS:</b>	
Cash and Cash Equivalents.....	\$2,481,158
Pledges Receivable .....	2,094,864
<i>(less allowance for uncollectible pledges of \$275,000)</i>	
Accounts Receivable.....	46,789
Grants Receivable .....	73,935
Investment Interest Receivable.....	12,718
Prepaid Expenses/Other.....	53,378
<b>TOTAL CURRENT ASSETS.....</b>	<b>4,762,842</b>

## OTHER ASSETS:

Receivables - Long Term .....	15,208
Investments - Unrestricted .....	2,092,204
Investments - Temporarily Restricted.....	1,920,534
Investments - Permanently Restricted .....	208,096
Investment - Certificate of Participation.....	224,192
Cash Surrender Value of Life Insurance.....	28,930
<b>TOTAL OTHER ASSETS.....</b>	<b>4,489,164</b>

<b>EQUIPMENT, NET OF ACCUMULATED DEPRECIATION.....</b>	<b>90,086</b>
<b>BENEFICIAL INTEREST IN PERPETUAL TRUST .....</b>	<b>591,154</b>

<b>TOTAL ASSETS.....</b>	<b>\$9,933,246</b>
--------------------------	--------------------

## LIABILITIES

### CURRENT LIABILITIES:

Agency Allocations Payable.....	\$3,105,281
Accounts Payable - Trade.....	212,734
Due to Designated Agencies .....	626,424
Due to Other Organizations and Grantees.....	174,887
Deferred Revenue .....	375
Accrued Expenses .....	49,419
Accrued Salaries and Wages .....	58,900
<b>TOTAL CURRENT LIABILITIES .....</b>	<b>4,228,020</b>

### LONG-TERM LIABILITIES:

Pension Contribution Payable .....	284,912
<b>TOTAL LIABILITIES.....</b>	<b>4,512,932</b>

## NET ASSETS

Unrestricted.....	912,364
Temporarily Restricted .....	3,679,770
Permanently Restricted.....	828,180
<b>TOTAL NET ASSETS .....</b>	<b>5,420,314</b>

<b>TOTAL LIABILITIES AND NET ASSETS.....</b>	<b>\$9,933,246</b>
--	--------------------

A copy of the financial statement for the fiscal year ended June 30, 2014, audited by certified public accountants engaged by United Way of Lancaster County, is available upon request.



**ALCOA IS PROUD TO  
LIVE UNITED**



**WHEN WE LIVE UNITED,  
WE CAN MAKE GREAT THINGS HAPPEN**

Whether we have big or small roles to play, by working together, we can improve the lives of every child and adult in need throughout Lancaster County.

The law firm of McNeese Wallace & Nurick proudly supports collective impact and the Four Bold Goals of the United Way of Lancaster County to help build a stronger community, our community.



# LIVE UNITED

## YOU CAN MAKE A DIFFERENCE

With your generous support of the United Way Community Impact Fund, you can ensure that our four BOLD goals are achieved. With your caring advocacy and volunteer spirit, we can all live in a community that's happier, healthier and more productive than ever before. **Your gift will improve lives.**

### Give Back. Win Big!

We salute Armstrong for its leadership donation to our 2015-16 prize giveaway. Give back, and you could win big: \$1,000 a month for a year, thanks to the generosity of Armstrong World Industries.



## UNITED WAY OF LANCASTER COUNTY BOARD MEMBERS

### Officers

#### Board Chair

Randy S. Patterson  
City of Lancaster

#### Vice Chair, Community Impact

Jan Loeffler Bergen  
Lancaster General Health

#### Immediate Past Chair

Jennifer L. Craighead, Esq.  
Barley Snyder LLC

#### Vice Chair, Resource Development

Scott Burky  
Rhoads Energy Corporation

#### Vice Chair, Finance

Kathy Pandelidis  
Granbois, Esq.  
McNees, Wallace & Nurick LLP

#### Vice Chair, Marketing & Communications

John Humphries  
WGAL 8

### Secretary

Robin D. Stauffer  
The High Companies

### Members

Dr. Brenda Becker  
Hempfield School District (retired)

### 2015-16 Campaign Chair

Michael Biggerstaff  
Nxtbook Media

Dr. Brian Bliss  
Solanco School District

Peter Caddick  
CNH New Holland Agriculture

Teddie Chairsell  
Community Volunteer

Michael Daniels  
Community Volunteer

Linda Dang  
Community First Fund

Tim Dunigan  
Johnson & Johnson  
USW Local 10-670

Ben Eison  
Frontier Communications

Scott Fiore  
TriStarr Staffing

Lynn Fitzsimons, CPA  
Walz Group

Peter D. Kerekgyarto  
Beers + Hoffman Architecture

James Laughman  
PerformCare

Walt Legenstein  
Certified Carpet

Maureen Maley  
Genesis HealthCare

Theresa Mongiovi, Esq.  
Brubaker  
Connaughton Goss & Lucarelli LLC

Herbert Nelson  
Community Volunteer

Stephen Nieli  
PNC Wealth Management

Nelson M. Polite Sr.  
Community Volunteer

Michael Ronan  
PSEA (retired)

Angie Sargent  
Fulton Financial Corporation

David Schulz  
Armstrong World Industries

Andrea Shirk  
Rock Litz

J. Richard Thomas  
Lancaster Mennonite High School

Janet Treer  
The Treer Group

Beverly Wise  
Susquehanna Bancshares, Inc.

WGAL is proud to support the bold goals of the **United Way of Lancaster County** and its impact on the Community



WGAL NEWS 8



*Live United.*

**HERSHEY** 

*Bringing Goodness to the World*

**GIVE. ADVOCATE. VOLUNTEER.**  
**LIVE UNITED**™



## The High companies are proud supporters of the United Way of Lancaster County.

High and its co-workers share the United Way vision of a world where all individuals and families achieve their human potential through education, income stability, and healthy lives. Each year, High conducts a three-month co-worker campaign to help United Way agencies in the communities in which High co-workers live, work, and play. Since 2010, our co-workers have demonstrated their generosity by contributing more than \$1 million, and giving their time and talent to support outreach for health care programs, financial stability, education, and the needs of vulnerable populations.

Thanks to High co-workers, the United Way, and to all in our communities who help us Live United.

Industry Leadership.

Environmental Stewardship.

Community Commitment.

 *Solutions you can trust.*  
[www.high.net](http://www.high.net)