

# SOLANCO FAMILY LIFE NETWORK

United Way of  
Lancaster County





## COLLECTIVE IMPACT PARTNERSHIP SPOTLIGHT


## BOLD GOALS ADDRESSED

### COMMUNITY NEED

The Solanco community faces **multiple barriers** to education, financial stability, substance abuse resources, adequate nutrition, and more. Lack of access to transportation keeps many residents from getting much-needed resources. Often the issues of physical and emotional health, financial well-being, and family life overlap, demanding a collaborative and **multi-faceted approach** to addressing them.

 100% of our children will enter kindergarten ready to learn.

 100% of students and adults will have post-secondary credentials.

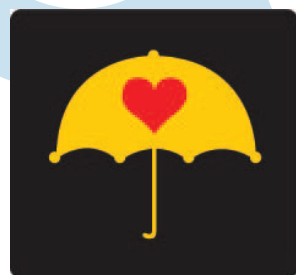
 Decrease individuals and families living in poverty by 50%.

 100% of individuals, children and families will have a medical home.

### OUR SOLUTION

The vision of the Solanco Family Life Network (SFLN) is to empower families to connect with community partners that **meet the needs of the whole family, in all areas of life, fostering a thriving community**. SFLN meets residents where they are, providing programming and support services for individuals of all ages. The *Love, Lift, Launch* framework helps address acute, intermediate, and chronic needs while building relationships and trust.

Through collaborative efforts, SFLN has identified local resources as well as gaps in services. SFLN partners **actively work to fill those gaps by creating and expanding programming that supports family stability**. They provide educational programs and workshops, offer career readiness training, and help residents in the southern end of Lancaster County become better connected in the community.



SOLANCO  
**FAMILY LIFE**  
NETWORK

### MAJOR SUCCESSES

Created *Love, Lift, Launch* framework to best meet the needs of the Solanco area community

**OVER 60**  
connected partners and growing in the Solanco area

Initiated career-awareness programs for students as well as High School Equivalency and ESL classes for adult learners

# KEY PARTNERS

New Hope Community Life Ministries

COBYS Family Services

Lancaster-Lebanon Intermediate Unit 13 (IU13)

The Literacy Council of Lancaster-Lebanon

Quarryville Library Center

Solanco Neighborhood Ministries

Solanco School District

Solid Rock Youth Ministries

Southern End Community Association

United Way of  
Lancaster County



“OUR MISSION FROM THE START WAS SIMPLE: WE WANTED TO HELP FAMILIES IN SOLANCO. WORKING TOGETHER WAS THE BEST WAY TO MAKE THAT HAPPEN.”



Solanco Family Life Network, a partnership between schools, social services, churches, and community organizations officially forms

First High School Equivalency classes started in the Solanco community

JUNE 2016

JUNE 2018

JUNE 2015

APRIL 2018

Creation of SFLN website and installation of kiosk at Quarryville Library

Implementation of Love, Lift, Launch strategic plan