

# BOLD GOAL 4 HEALTHY LIVING

100% of individuals, children, and families will have a medical home.



## THE NEED: Healthcare Statistics



### Ratio of Patients to Providers

**1,326:1**

Patients to  
Primary Care  
Physicians

**1,413:1**

Patients to  
Mental Health  
Providers

**2,124:1**

Patients to  
Dentists



### Uninsured

**12%**

**14%**

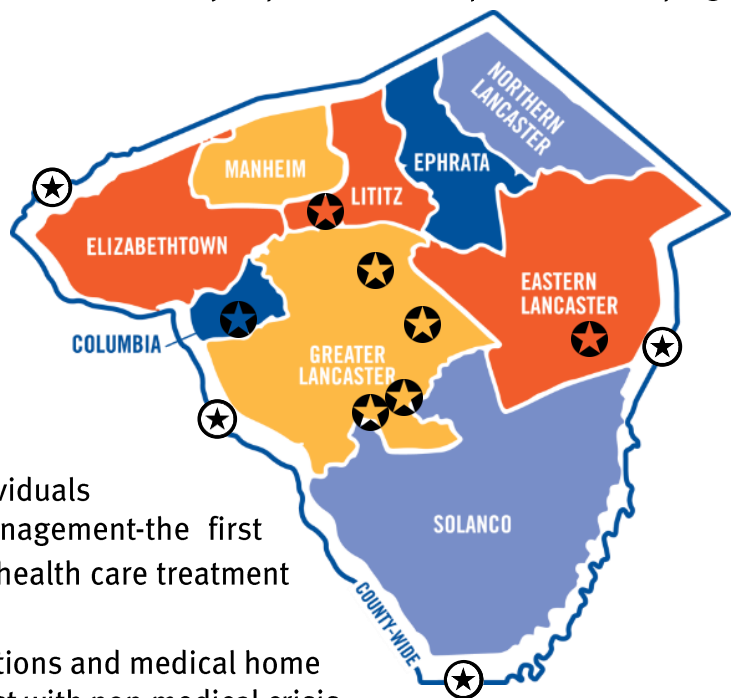
Mentally Unhealthy Days  
Reported in Past  
Month  
(Age-Adjusted)

**3.2**



Imagine a Lancaster County where everyone in Lancaster County has access to medical, dental, and behavioral health services that they need. This is just one of four BOLD goals that United Way of Lancaster County is helping us accomplish by 2025 and here are the Community Impact Partnerships that are helping us achieve this goal:

1. Community Wellness
2. Integration Services for New Americans
3. Lancaster Medical Legal Partnership/LMLP
4. Lancaster-South Connections
5. Let's Talk, Lancaster
6. R.E.P. (Reunify, Empower, Prevent)
7. SAIL (Systems Aligned in Learning)
8. The Learning Lancaster Collaborative
9. Together Initiative



## YEAR 1 2015-2016 HIGHLIGHTS:

- Provided mental health first aid training to 633 individuals
- Integrated civil legal aid and financial case management-the first initiative of its kind in the nation-with an intensive health care treatment model for high utilizers
- Connected individuals and families to insurance options and medical home
- Established community paramedic initiative to assist with non-medical crisis calls in Southeast area of Lancaster city
- Served 1,000 patients at new medical clinic at Reynolds Middle School, a Full Service Community School
- Adopted a universal depression screening tool (PHQ-9) and began implementing the tool in nearly 80% of healthcare providers
- Changed the billing system to integrate behavioral health within health care so patients can access both services at the same location
- Piloting NavWell, a software system used to connect health care providers with the 2-1-1 database in order to refer patients to behavioral health providers
- Expanded school-based behavioral health services to support parents and families in Pequea Valley
- Developed referral and consent process used to connect families involved with Children & Youth with needed social services
- Hosted Mental Health Expo to connect community with available services, providers, and resources