

United Way Needs Assessment

Overview

This document provides information gathered as part of the United Way of Lancaster County's Community Needs Assessment process. The document first presents the findings from the results of a community needs assessment survey conducted among adults living in Lancaster County during spring 2014, which updates a baseline needs assessment conducted in 2009. The document next presents information about the relative performance of the county in comparison to other Pennsylvania counties on indicators that are designed to assess the County's progress toward important health, education, and financial goals. These assessment strategies are two pieces of a comprehensive effort to determine community needs.

The survey shows that many members of the Lancaster community experience significant financial and health-related problems. The County has seen some improvement since 2009, notably in reduced financial hardships, but many problems persist at about the same levels. Hardships of all types are experienced throughout the county, but they are often concentrated within specific demographic subgroups, with the greatest differences driven by income.

The comparative indicators present a mixed picture about Lancaster County's place relative to other counties in the state. Lancaster performs comparatively well on health indicators, but it does not have noticeable strengths when assessing its performance on education or financial well-being indicators.

Methods

The Center for Opinion Research at Franklin and Marshall College designed and administered a survey of Lancaster County residents to provide data for the United Way's Community Needs Assessment. Telephone interviews were conducted from April 23 - May 5, 2014, and the survey was completed by 601 Lancaster County residents. The survey was conducted using a standard random digit dialing methodology that included cell-phone only (CPO) households. One-quarter (23 percent) of the final sample was CPO. The methods used to conduct the survey in 2014 are the same as were used to conduct the 2009 United Way Needs Assessment. The demographic characteristics of the 2014 survey sample

are very similar to those of the 2009 community needs assessment. The survey results were weighted using a proportional iterative weighting methodology to match 2012 American Community Survey five-year estimates for the adult population based on gender, age, city residency, education and race. The sample error is plus or minus 4 percent. The survey results are representative of the adult population of Lancaster County.

Measuring Personal and Community Need

The survey used two different question formats to identify community needs.¹ The first approach was to ask broad, open-ended survey questions about personal and family needs as well as perceptions of community problems.

These open-ended questions allowed survey participants to provide any answer they wanted, which were then categorized. After the open-ended questions were asked the survey moved into a series of "life events" questions that are designed to find out about significant events that have taken place during the past year. The survey asked Lancaster County residents about 29 different events that may have happened to them during the previous 12 months. These events reflect four major categories of experience: finances, crime and violence, emotional and mental health, and medical care.

Self-Defined Problems

The personal problems that survey participants say they face differ a bit from the problems they believe are confronting the community. Which should we rely on? There is probably no doubt that citizens are better able to tell us what problems they face personally; community problems are often an abstraction driven by news and information that might be outside of a persons' direct experience. Personal problems show more financial and health problems than are identified as problems for the community (Table 1). Education and crime appear more often as community issues than as personal ones (Table 2).

¹ The survey instrument is included in Attachment A.

United Way Needs Assessment 2014 Report

Table 1. Self-Identified personal problems*

	2009	2014
Financial stability		
Economy, personal finances, cost of living, unemployment	46%	39%
Taxes	3%	2%
Housing: affordable housing	0%	1%
Poverty, homelessness, lack of funding to help	0%	1%
Total	49%	43%
Health		
Illness, health, old age, elder care, death	9%	7%
Healthcare, insurance	7%	6%
(Swine) flu, availability of vaccination	1%	0%
Total	17%	13%
Education		
Education: cost of college tuition	2%	2%
Education: quality schools, programs and activities for kids	1%	2%
Total	3%	4%
Other		
Elderly needs not met, retirement, social security	1%	3%
Time, too busy	1%	3%
Crime, drugs, violence, lack of police	1%	2%
Government, politicians	2%	2%
Values, morality, religion, teen pregnancy, single parents	1%	2%
No sense of community, people not friendly	0%	1%
Raising children, discipline	2%	1%
Nothing	4%	5%
Do not know	16%	18%
Total	28%	37%

*Question wording: What do you think is the MOST IMPORTANT problem facing you and your family today?

Table 2. Self-Identified community problems*

	2009	2014
Financial stability		
Economy, personal finances, cost of living, unemployment	46%	39%
Poverty, homelessness, lack of funding to help	3%	5%
Taxes	4%	3%
Housing: affordable housing	0%	2%
Total	37%	31%
Health		
Healthcare, insurance	4%	2%
Total	4%	2%
Education		
Education: quality schools, programs and activities for kids	5%	10%
Total	5%	10%
Other		
Crime, drugs, violence, lack of police	13%	11%
Values, morality, religion, teen pregnancy, single parents	4%	4%
Environment, climate change, recycling	1%	3%
Time, too busy	1%	3%
Government, politicians	2%	2%
No sense of community, people not friendly	2%	2%
Roads, infrastructure	1%	2%
Youth behavior, getting into trouble	1%	1%
Lack of motivation, personal responsibility	1%	0%
Lack of non-profit funding	1%	0%
Nothing	0%	5%
Other	6%	4%
Do not know	19%	21%
Total	54%	60%

*Question wording: What do you think is the MOST IMPORTANT problem facing your community today?

Life Events

Introduction

Negative life events are undesirable experiences that disrupt our normal activities and require us to substantially alter our typical behavior. These events can dramatically affect both our physical and psychological well-being. Asking about negative life events provides a general measure of societal well-being, as well as an understanding of which subgroups in our community suffer more negative events². We've used a life events scale to provide a consistent measure of the general well-being of Lancaster county adults.

Most Common Negative Life Events

Table 3 shows the life events that were experienced by 20 percent or more of Lancaster County adults in 2014. This means that each of these events was experienced by at least 78,000 adults.³ Considering all categories of life events, we see that medical and financial hardships are most common. All but one of these indicators improved since 2009; more people in 2014 have foregone healthcare than in 2009.

Another way of looking at the data is to see which life events had the largest net change from 2009. In Table 4, we see that all categories are represented and that most show positive change, but two indicators are worse than in 2009. More Lancaster County adults had housing problems and used illegal drugs in 2014 than in 2009.

Table 3. Hardships with highest percent yes'

	2009	2014	Change
Were you affected by a major decline in your financial situation?	34%	25%	-9
Did you rely on home remedies or over the counter drugs instead of going to see a doctor because of the cost?	26%	23%	-3
Did you SKIP dental care or checkups because of the cost?	31%	23%	-8
Did you skip a recommended medical test or treatment because of the cost?	18%	20%	+2
Were you unable to pay utility bills on time?	22%	20%	-2

*Note: Statistically significant differences are in bold

Table 4. Hardship Scores with Largest Net Change in Percent Yes

	2009	2014	Change
Did you experience a reduction in pay for any reason?	29%	18%	-12%
Were you affected by a major decline in your financial situation?	34%	25%	-9%
Did you SKIP dental care or checkups because of the cost?	31%	23%	-8%
Were you let go or permanently laid off from your job?	12%	6%	-6%
Did you NOT fill a prescription for a medicine because of the cost?	18%	14%	-4%
Were you unemployed and looking for work for as long as a month?	16%	12%	-4%
Were you unable to afford or get access to needed transportation?	9%	6%	-3%
Did you rely on home remedies or over the counter drugs instead of going to see a doctor because of the cost?	26%	23%	-3%
Were you burglarized, or was your home or property broken into?	7%	4%	-3%
Were you discriminated against because of your race, nationality, or sex?	7%	4%	-3%
For financial reasons, did you have to temporarily live with others or in a shelter or on the street?	2%	5%	3%
Did you use illegal drugs one or more times?	1%	4%	3%

² To learn more about the life events approach, see Troubles in America: A Study of Negative Life Events Across Time and Sub-groups. Tom W. Smith. National Opinion Research Center University of Chicago GSS Topical Report No. 40 September, 2005

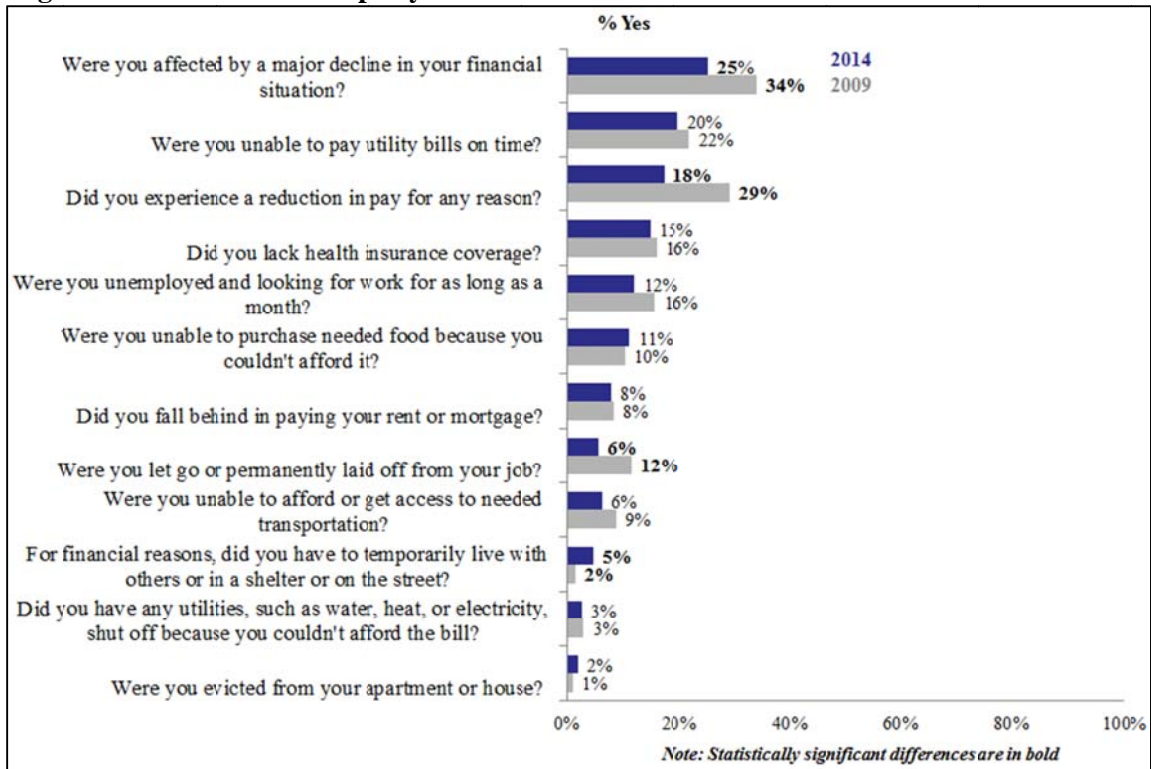
³ Lancaster's adult population is 390,975.

Financial Hardships

The needs assessment survey asked county residents whether they had experienced any one of twelve financial hardships during the 12 months preceding the interview. Financial hardships are the most common faced by county residents. There is

some good news in that many of the financial indicators have improved since the 2009 survey. Still, sizable numbers of county residents are experiencing hardships and some of these indicators did increase: more people are living with others than did so in 2009 (Figure 2).

Figure 2. Financial Hardships by Year

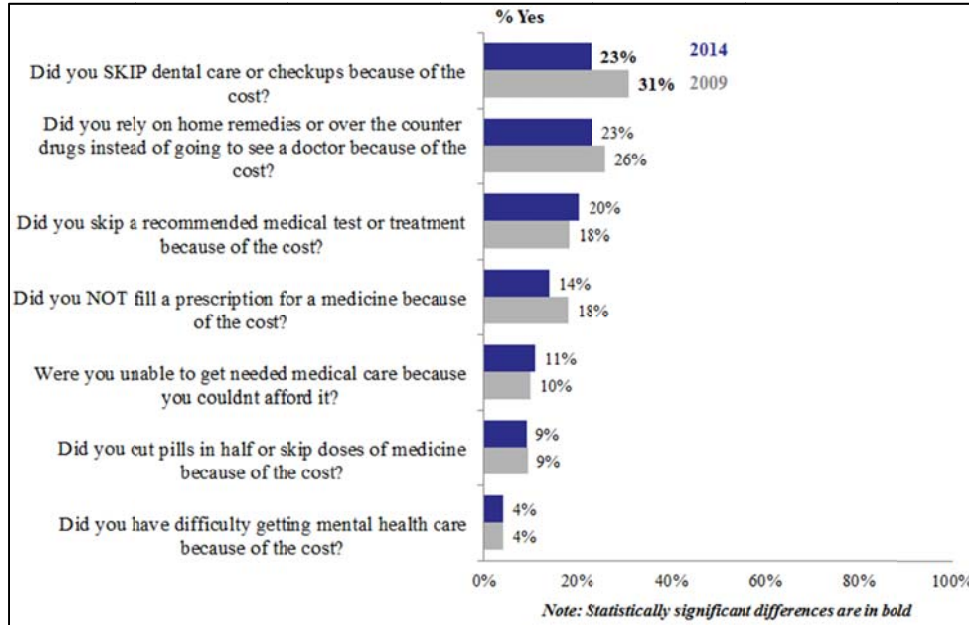


Medical Hardships

The needs assessment survey asked seven questions about county residents' health care experiences during the past year. Medical hardships are the second most frequently experienced problems.

Most of these have held steady since 2009, although significantly fewer people say they are skipping dental care due to the cost (Figure 3).

Figure 3. Medical Hardships by Year

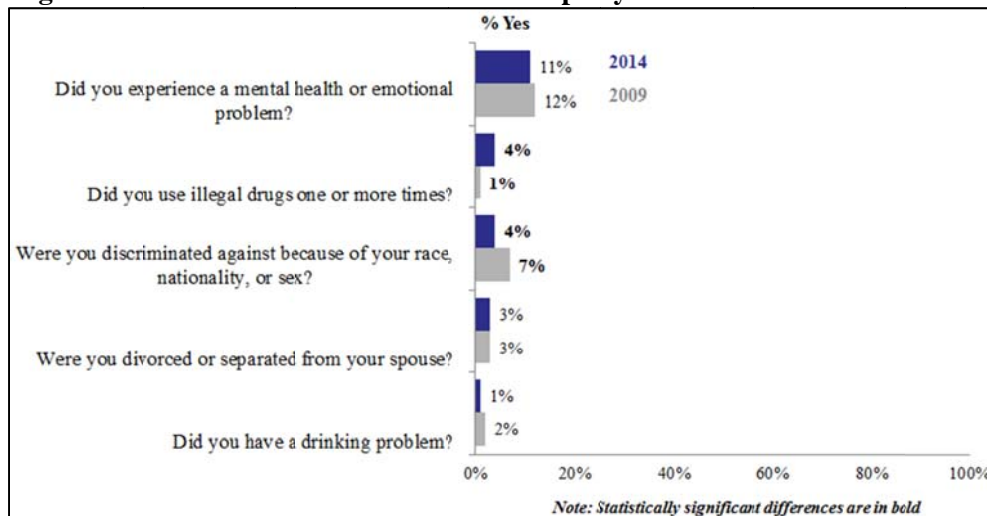


Emotional/Mental Health Hardships

The needs assessment survey asked five questions about county residents' emotional and mental health experiences during the past year. Emotional hardships appear less frequently than

financial or medical hardships. Discrimination appears to have declined since 2009, although illegal drug use appears to have increased (Figure 4).

Figure 4. Emotional/Mental Health Hardships by Year

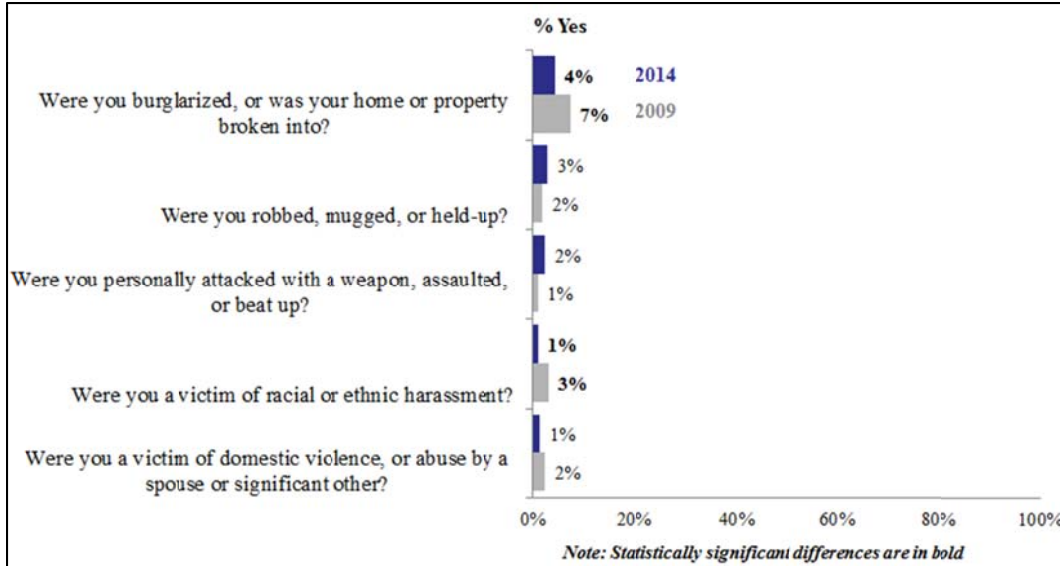


Crime/Violence Hardships by Year

The needs assessment survey asked five questions about county residents’ crime and violence experiences during the past year. Crime and violence

are the least common categories of experience. Fewer people say they experience property crimes and racial or ethnic harassment than five years ago (Figure 5).

Figure 5. Crime/Violence Hardships by Year



Hardship Scores by Selected Demographics

In addition to reviewing the individual items, total hardships scores can be created to show how these experiences are distributed among the different demographic groups within the community. That is, we can use the data to ask the question: do some groups in our community experience more hardships than others?

It is clear that some groups experience far more hardships than others. Younger respondents, non-whites, city residents, and those earning less than \$35,000 per year experience the most hardships, on average (Figure 6).

A multivariate analysis of the total number of life events experienced shows that being unemployed and having lower income are associated with more negative life events. Other variables such as race and being a resident of Lancaster city do not contribute significantly to the number of life events experiences when these other variables are accounted for (Table 5).

Figure 6. Summary of Hardship Scores by Selected Demographics

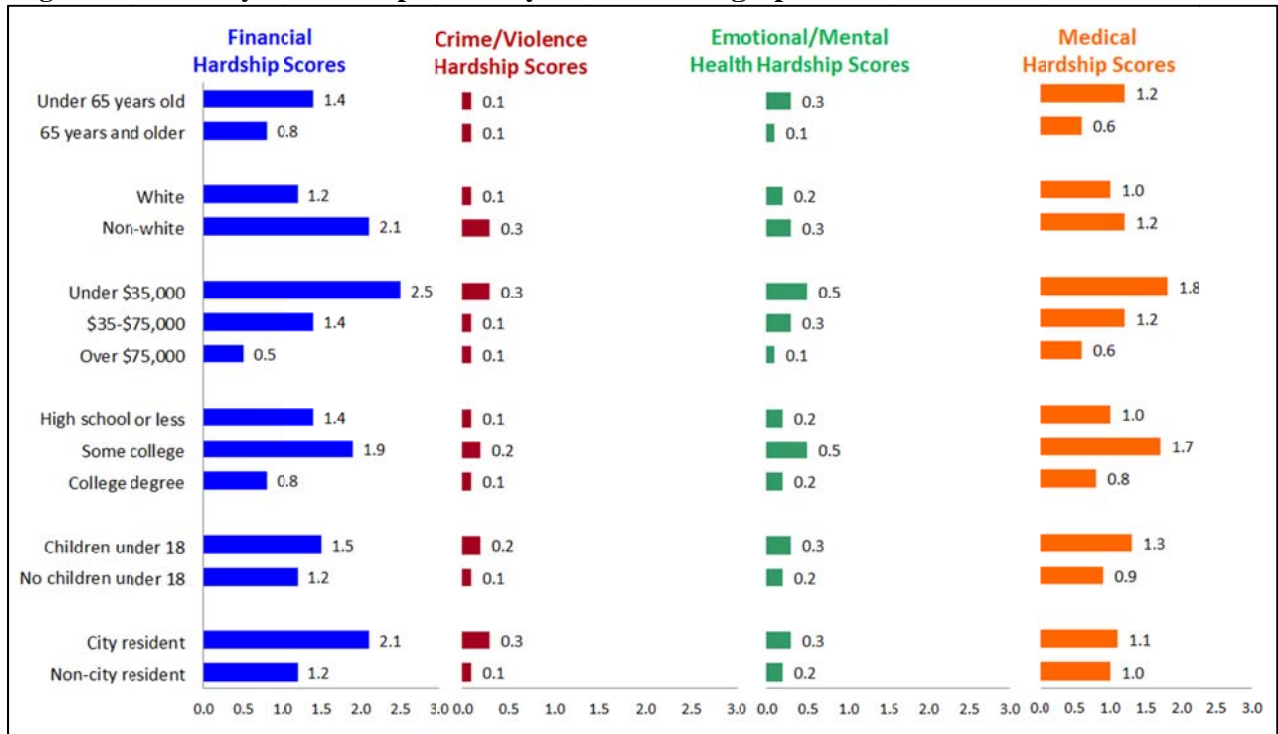


Table 5. Multivariate analysis of the total number of life events experienced *

	Unstandardized Coefficients		Standardized Coefficients	t	Sig.
	B	Std. Error	Beta		
(Constant)	7.65	1.13		6.78	0.000
recoded age	-0.20	0.26	-0.04	-0.77	0.443
recoded education	0.04	0.10	0.02	0.42	0.675
recoded race	0.34	0.59	0.03	0.58	0.561
recoded work	-0.29	0.09	-0.16	-3.04	0.003
lanccity	-0.29	0.52	-0.02	-0.55	0.580
Child	0.77	0.36	0.10	2.15	0.032
GENDER: Sex of respondent	0.01	0.33	0.00	0.04	0.967
recoded income	-2.18	0.25	-0.42	-8.79	0.000

*Dependent Variable: Total Hardship Score

Conclusions

Many members of our community experience significant financial and health-related problems. This is true whether we use an open-ended or life-events approach. The County has seen some improvement since 2009, notably in reduced financial hardships, but many problems persist at about the same levels. Another notable improvement is that Lancaster appears to be more tolerant as evidenced

by less discrimination and harassment. Hardships of all types are experienced throughout the county, but are also concentrated within specific demographic subgroups. Notable differences in hardships are evident in every category of hardship by age, race, education, income, and city residency, but the greatest differences appear to be driven by income.

Lancaster County Trend Data for United Way Target Areas: Health, Education, and Finance

Introduction

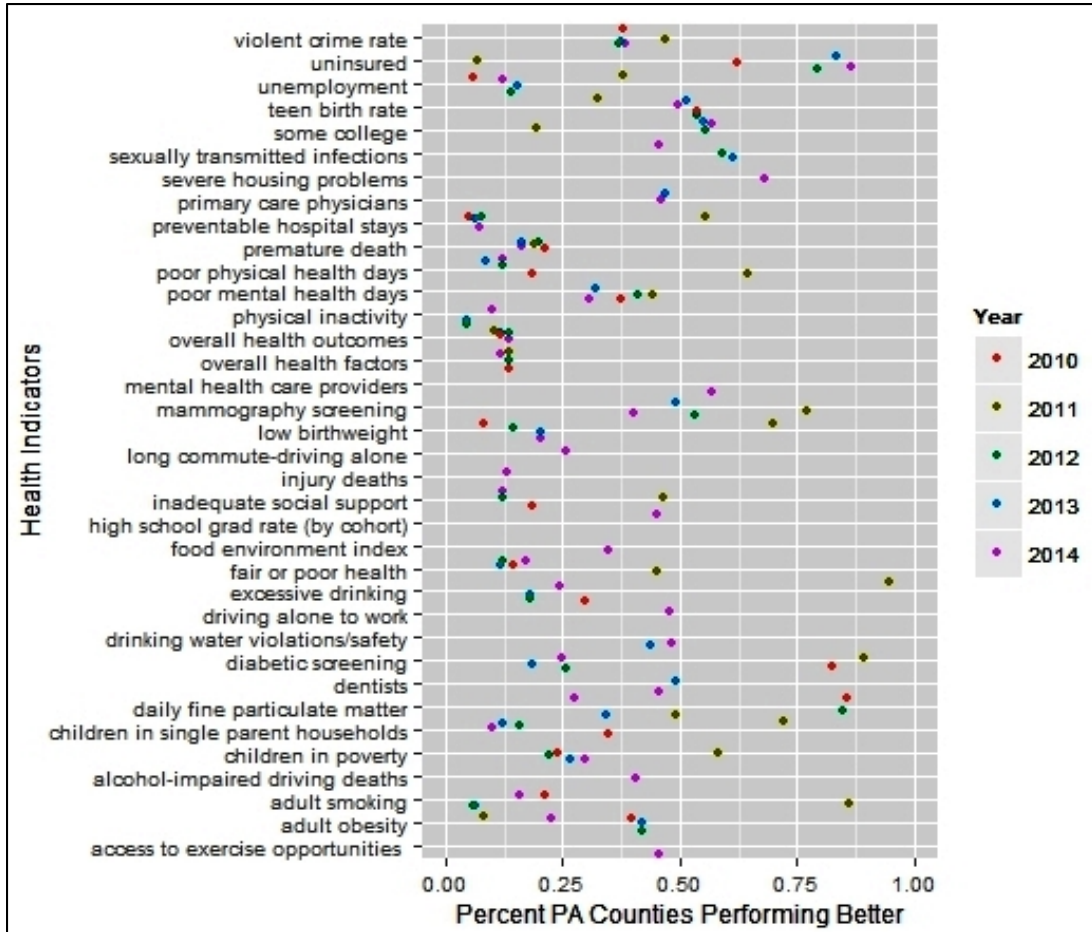
In addition to tracking life events, the United Way also started gathering data from existing sources that can be monitored annually to assess progress toward reaching community goals in health, education, and finance.

Health

Figure 7 displays Lancaster County's state rankings over the course of four years (2010-2014) on 30 health-related measures used by the United Way to identify progress on their health strategies. The data for these figures comes from the County Health Rankings & Roadmaps website, created and maintained through a collaboration of the Robert Wood Johnson Foundation and the University of

Wisconsin Population Health Institute. The dots in this figure represent Lancaster County's rank relative to the state's other 67 counties. Lower scores indicate a better relative placement. In 2014 Lancaster was in the top 10% of PA counties for having a low rate of preventable hospital stays and performed poorest in its rate of uninsured 18-64 year olds. The trend data shows that Lancaster County is consistently among the top 25% of counties in preventable hospital stays, children in single-parent households, and low rates of physical inactivity. Lancaster consistently performs poorly in rates of uninsured adults, teen births, fast food restaurants, and in a new indicator added in 2014, severe housing problems.

Figure 7. County Health Ranking Indicators 2010-2014

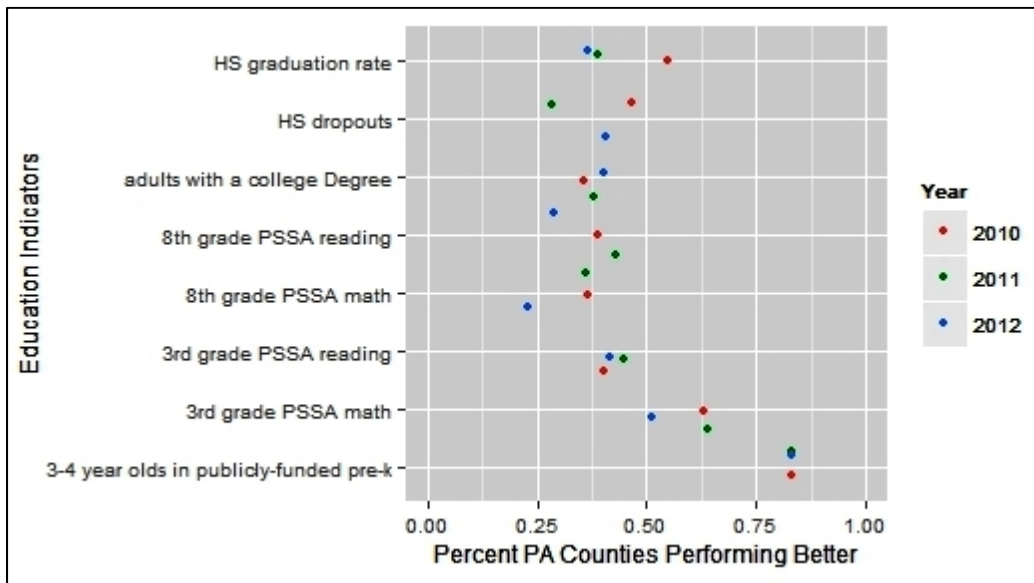


Education

Figure 8 displays Lancaster County's state rankings on eight education-related measures used by the United Way to identify progress on their education strategies. The data for these figures comes from the PA Department of Education, and from the Federal Office of Head Start. The dots in this figure represent Lancaster County's rank relative to the state's other 67 counties. Lower scores indicate a better relative placement. In 2012, Lancaster was in the top 25 percent of PA counties for eighth-grade

students scoring proficient or advanced on the math PSSA, and performed poorest in its rate of children ages 3-4 enrolled in publicly-funded Pre-K. The trend data shows that Lancaster is not consistently among the top performing counties in any of these indicators. Lancaster performs consistently poorly in its rate of three- and four-year-old children enrolled in publicly funded Pre-K programs, as well as third-grade PSSA testing.

Figure 8. Education indicators 2010-2012

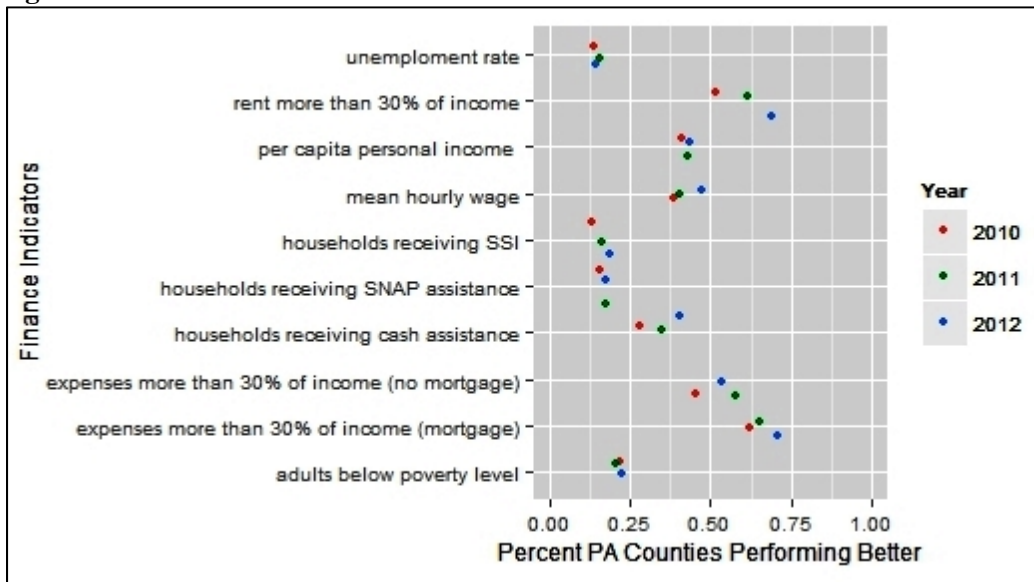


Finance

Figure 9 displays Lancaster County's state rankings on 10 finance-related measures used by the United Way to identify progress on their finance strategies. The data for these figures comes from the Bureau of Economic Analysis, the PA Department of Labor, the U.S. Census Bureau, and the American Community Survey. The dots in this figure represent Lancaster County's rank relative to the state's other 67 counties. Lower scores indicate a better relative placement. In 2012 Lancaster was near the top of Pennsylvania counties for having a low rate of unemployed adults, and performed poorest in its high

rates of selected monthly owner costs exceeding more than 30% of household income (units with a mortgage). The trend data shows that Lancaster is consistently strong in low rates of unemployed adults, low percentage of households with food stamps/SNAP benefits, and low percentages of households with supplemental security income. Lancaster performs consistently poorly in its high rates of selected monthly owner costs exceeding more than 30% of household income (units with and without a mortgage), gross rent exceeding more than 30% of household income, and average hourly wage.

Figure 9. Finance indicators 2010-2012



United Way Needs Assessment Survey
Marginal Frequency Report, weighted data

April 23 – May 5, 2014
N = 601

Q1. What would you say is the most important problem facing your community today?

<u>2014</u>	<u>2009</u>	
21%	30%	Economy, personal finances, cost of living, unemployment
11%	13%	Crime, drugs, violence, lack of police
10%	5%	Education: quality schools, programs and activities for kids
5%	3%	Poverty, homelessness, lack of funding to help
4%	4%	Values, morality, religion, teen pregnancy, single parents
3%	1%	Environment, climate change, recycling
3%	4%	Taxes
2%	2%	Government, politicians
2%	4%	Healthcare, insurance
2%	0%	Housing: affordable housing
2%	2%	No sense of community, people not friendly
2%	3%	Overdevelopment, loss of open space, farmland
2%	1%	Roads, infrastructure
1%	0%	Discrimination, prejudice
1%	2%	Traffic
1%	1%	Youth behavior, getting into trouble
0%	1%	Lack of motivation, personal responsibility
0%	1%	Lack of non-profit funding
5%	0%	Nothing
4%	6%	Other
21%	19%	Do not know

Q2. What do you think is the MOST IMPORTANT problem facing YOU and YOUR FAMILY today?

<u>2014</u>	<u>2009</u>	
39%	46%	Economy, personal finances, cost of living, unemployment
7%	9%	Illness, health, old age, elder care, death
6%	7%	Healthcare, insurance
3%	1%	Elderly needs not met, retirement, social security
3%	1%	Time, too busy
2%	1%	Crime, drugs, violence, lack of police
2%	2%	Education: cost of college tuition
2%	1%	Education: quality schools, programs and activities for kids
2%	2%	Government, politicians
2%	3%	Taxes
2%	1%	Values, morality, religion, teen pregnancy, single parents
1%	0%	Housing: affordable housing
1%	0%	No sense of community, people not friendly
1%	0%	Poverty, homelessness, lack of funding to help
1%	2%	Raising children, discipline
0%	1%	(Swine) flu, availability of vaccination
5%	4%	Nothing
5%	5%	Other
18%	16%	Do not know

Int1. Now, I would like you to tell me if any of the following happened to you during the past 12 months. First, what about financial matters? Did any of the following happen to you during the past 12 months, that is since ____, 2014?

	Yes		No	
	2014	2009	2014	2009
Were you affected by a major decline in your financial situation?	26%	34%	74%	66%
Were you unable to pay utility bills on time?	20%	22%	80%	78%
Did you experience a reduction in pay for any reason?	18%	29%	82%	71%
Did you lack health insurance coverage?	15%	16%	85%	84%
Were you unemployed and looking for work for as long as a month?	12%	16%	88%	84%
Were you unable to get needed medical care because you couldn't afford it?	11%	10%	89%	90%
Were you unable to purchase needed food because you couldn't afford it?	11%	10%	89%	90%
Did you fall behind in paying your rent or mortgage?	8%	9%	92%	92%
Were you let go or permanently laid off from your job?	6%	12%	94%	88%
Were you unable to afford or get access to needed transportation?	6%	9%	94%	91%
For financial reasons, did you have to temporarily live with others or in a shelter or on the street?	5%	2%	95%	99%
Did you have any utilities, such as water, heat, or electricity, shut off because you couldn't afford the bill?	3%	3%	97%	97%
Were you evicted from your apartment or house?	2%	1%	98%	99%

Q19b. Where were you living- with others, in a shelter, or on the street?

<u>2014</u>	<u>2009</u>	
n=28	n=10	
70%	100%	With others
13%	0%	In a shelter
6%	0%	With others and on the street
6%	0%	All three: with others, in a shelter, and on the street
6%	0%	Don't know

Int2. Next, did any of the following criminal or legal events happen to you during the past 12 months, that is since ____, 2014? Just a reminder, the information you provide will never be connected to you. Responses will be reported collectively, for example, 21% of respondents said X and 10% said Y. Were you...

	Yes		No	
	2014	2009	2014	2009
Burglarized, or was your home or property broken into?	4%	7%	95%	93%
Personally attacked with a weapon, assaulted, or beat up?	3%	1%	98%	99%
Robbed, mugged, or held-up?	3%	2%	97%	98%
A victim of domestic violence, or abuse by a spouse or significant other?	1%	2%	99%	97%
A victim of racial or ethnic harassment?	1%	3%	99%	97%

Kids@a. Do you have any children 18 years of age or younger?

<u>2014</u>	<u>2009</u>	
37%	40%	Yes
63%	60%	No

Kids@b. How many children do you have that are 18 years of age or younger?

<u>2014</u>	<u>2009</u>	
n=221	n=255	
38%	37%	One child
29%	30%	Two children
20%	18%	Three children
11%	14%	Four or more children

N12. How many children do you have that are ages 5 through 18?

<u>2014</u>	<u>2009</u>	
n=221	n=255	
19%	22%	None
35%	28%	One child
22%	30%	Two children
17%	10%	Three children
7%	10%	Four or more children

Int3. In the past 12 months, that is since ____, 2014, did [any of your children/your child]...

2014: n=176 2009: n=199	Yes		No	
	2014	2009	2014	2009
Skip school without a legitimate excuse?	5%	6%	95%	95%
Become a victim of violence while in school or on school property?	4%	8%	96%	92%
Get arrested or in trouble with the law?	2%	5%	98%	95%
Drop out of high school?	0%	1%	100%	99%

Int4. In the last 12 months, that is since ____, 2014, did any of the following happen to you? Were you...

	Yes		No	
	2014	2009	2014	2009
Discriminated against because of your race, nationality, or sex?	4%	7%	96%	93%
Divorced or separated from your spouse?	3%	3%	97%	97%

Int5. And finally, thinking about health-related matters, did any of the following happen to you during the past 12 months, that is since ____, 2014? Did you...

	Yes		No	
	2014	2009	2014	2009
Experience a mental health or emotional problem?	11%	12%	89%	88%
Use illegal drugs one or more times?	4%	1%	96%	99%
Have a drinking problem?	2%	2%	99%	98%

2014: n=176 2009: n=199	Yes		No	
	2014	2009	2014	2009
Have a child under 18 who used drugs or had a drinking problem?	3%	1%	97%	99%
Have a child who was under 18 and became pregnant?	0%	1%	100%	99%

Q7b. Did this (mental health or emotional problem) cause you to miss work?

<u>2014</u>	<u>2009</u>	
n=67	n=75	
21%	25%	Yes
79%	75%	No

Q32a. I now have a few additional health-related questions. Do you have healthcare coverage, such as coverage provided by your employer, Medicare, Medicaid, or private health insurance?

<u>2014</u>	<u>2009</u>	
90%	88%	Yes
10%	12%	No

Q34. Do you have a FAMILY DOCTOR you use on a regular basis for most of your healthcare needs?

<u>2014</u>	<u>2009</u>	
92%	92%	Yes
8%	8%	No

Int6. In the past 12 months, that is since ____, 2014, did you do any of the following because of the cost? Did you...

	Yes		No	
	2014	2009	2014	2009
Skip dental care or checkups because of the cost?	23%	31%	77%	69%
Rely on home remedies or over the counter drugs instead of going to see a doctor because of the cost?	23%	26%	77%	74%
Skip a recommended medical test or treatment because of the cost?	20%	18%	80%	81%
Not fill a prescription for a medicine because of the cost?	14%	18%	86%	82%
Cut pills in half or skip doses of medicine because of the cost?	9%	9%	91%	91%
Have difficulty getting mental healthcare because of the cost?	4%	4%	96%	96%

Q42. Some people play the role of caregiver as part of their daily lives, which means they are responsible for meeting the physical and psychological needs of others. Do you act as a caregiver for another ADULT, such as a spouse, sibling, aunt, uncle, parent, or grandparent?

<u>2014</u>	<u>2009</u>	
18%	19%	Yes
82%	80%	No
0%	1%	Don't know

Q42b. Is that adult 65 years of age or older?

<u>2014</u>	<u>2009</u>	
n=106	n=121	
63%	59%	Yes
37%	41%	No

Q45. How many children do you have that are 6 years of age or younger?

<u>2014</u>	<u>2009</u>	
n=217	n=255	
57%	49%	None
23%	30%	One child
17%	16%	Two children
3%	5%	Three children
1%	0%	Four children

Q45b. How many days in the past week did you read to [your children/your child]?

<u>2014</u>	
n=94	
7%	None
6%	One day
7%	Two days
18%	Three days
1%	Four days
61%	Five or more days

Q46. How many days per week [do your children/does your child] 6 or younger require some type of child care?

<u>2014</u>	<u>2009</u>	
n=94	n=130	
44%	58%	None
3%	7%	One day
6%	10%	Two days
2%	5%	Three days
7%	0%	Four days
38%	20%	Five or more days

Use. Please tell me if you use the following child care for your [children/child] 6 or younger.

<u>2014</u>	<u>2009</u>	
n=52	n=55	
70%	61%	A parent, relative, friend or neighbor
47%	33%	A babysitter
42%	41%	Preschool
34%	41%	A licensed daycare center
22%	29%	Daycare out of someone's home
6%	4%	A Head Start program
5%	5%	A licensed group home provider

Percentages total more than 100% because multiple responses were accepted.

Q54. On average, how much do you pay each week for these child care services?

<u>2014</u>	<u>2009</u>	
n=35	n=55	
\$117	\$92	Mean
\$70	\$56	Median

Q55. You said that you have [NUMBER child/children] ages 5 through 18. [Do any of your school-age children/Does your school-age child] participate in a supervised after school program or child care?

<u>2014</u>	<u>2009</u>	
n=176	n=199	
22%	33%	Yes
78%	67%	No

Q56a. On average, about how many hours does [each child/your child] spend in after school activities or child care each week?

<u>2014</u>	<u>2009</u>	
n=38	n=65	
11	7	Mean
10	6	Median

Q57a. This past summer, did [any of your school-age children/your school-age child] participate in a supervised summer program or child care?

<u>2014</u>	<u>2009</u>	
n=176	n=199	
35%	28%	Yes
65%	73%	No

Q57y@a. What were the benefits of the summer program to you and your child?

<u>2014</u>	
n=62	
40%	Socialization, peer interactions
33%	Learning, education (general)
24%	Sports, physical activity
20%	Childcare while parent at work
18%	Safe place, supervised, cared for
10%	Participated in arts (music, theater, art)
5%	Playing (general)
4%	Other
4%	Do not know

Percentages total more than 100% because multiple responses were accepted.

Q57n@a. What is the MAIN reason [each child/your child] did NOT participate in a supervised summer program or child care this past summer?

2014

n=114

- 27% Parent not working, takes care of them
- 14% Involved in other group, extracurricular activities
- 14% No need, in general
- 11% Child old enough to stay home alone
- 8% Relatives, friends provide care
- 7% Cost
- 4% Child too young
- 2% Child does not want to
- 2% Could not find summer program
- 2% Child has disability
- 8% Other
- 3% Do not know

IntQ59. Do you have a great deal, a fair amount, not too much, or no trust at all in ...

2014	A great deal	A fair amount	Not too much	No trust at all	Do not know
Charities in general to accomplish what they say they will do?	20%	58%	15%	3%	4%
United Way to accomplish what they say they will do?	30%	39%	9%	7%	15%
American Red Cross to accomplish what they say they will do?	45%	37%	8%	5%	4%
Salvation Army to accomplish what they say they will do?	42%	41%	6%	5%	6%

DEMO. I now have a final few questions for statistical purposes only. First...

Q58. What is the name of the city, town, borough, or township in which you live?

<u>2014</u>	<u>2009</u>	
12%	11%	Lancaster City
7%	7%	Manheim Township
5%	5%	Lancaster Township
5%	4%	Lititz
4%	5%	Elizabethtown
4%	1%	Ephrata Township
3%	3%	Columbia
3%	3%	East Hempfield
3%	4%	East Lampeter
3%	2%	Mount Joy Borough
3%	1%	Warwick
2%	1%	Denver
2%	4%	Ephrata Borough
2%	0%	Leola
2%	3%	Manor
2%	1%	Mountville
2%	1%	Pequea
2%	2%	Quarryville
2%	1%	Rapho
1%	1%	Akron
1%	0%	Bartville
1%	2%	Brecknock
1%	1%	Clay
1%	1%	Conestoga
1%	1%	Earl
1%	1%	East Cocalico
1%	0%	East Donegal
1%	1%	East Earl
1%	1%	East Petersburg
1%	0%	Fulton
1%	1%	Lampeter
1%	2%	Landisville
1%	2%	Manheim Borough
1%	1%	Marietta
1%	1%	Martic
1%	0%	Maytown
1%	1%	Millersville
1%	2%	Mount Joy Township
1%	0%	Narvon
1%	2%	New Holland
1%	2%	Paradise
1%	2%	Penn
1%	0%	Reinholds
1%	0%	Salisbury
1%	1%	Strasburg
1%	1%	Terre Hill

1%	0%	West Cocalico
1%	1%	West Earl
1%	3%	West Hempfield
1%	1%	West Lampeter
1%	1%	Willow Street
0%	1%	Caernarvon
0%	1%	Colerain
0%	1%	Conoy
0%	1%	Gap
0%	1%	Kinzers
0%	1%	Upper Leacock
0%	1%	West Donegal
7%	7%	Other

SD. What is the name of the school district in which you live?

<u>2014</u>	<u>2009</u>	
11%	12%	Lancaster SD
10%	10%	Hempfield SD
9%	8%	Manheim Township SD
9%	7%	Penn Manor SD
7%	8%	Conestoga Valley SD
7%	7%	Ephrata Area SD
7%	5%	Warwick SD
6%	4%	Donegal SD
6%	6%	Eastern Lancaster County SD
5%	4%	Cocalico SD
5%	3%	Solanco SD
4%	9%	Elizabethtown Area SD
4%	5%	Manheim Central SD
4%	3%	Pequea Valley SD
3%	3%	Lampeter-Strasburg SD
2%	2%	Columbia Borough SD
0%	1%	Other
3%	3%	Do not know

AGE. What was your age on your last birthday?

<u>2014</u>	<u>2009</u>	
11%	9%	18-24
18%	20%	25-34
16%	17%	35-44
21%	20%	45-54
14%	11%	55-64
20%	23%	65 and older

EDUC. What was the highest grade level of schooling you have completed?

<u>2014</u>	<u>2009</u>	
14%	15%	Non high school graduate
42%	42%	High school graduate (or GED)
9%	13%	Some college
6%	9%	Two-year or tech degree
18%	15%	Four year college degree
12%	8%	Postgraduate degree

SCHL. [Are any of your children/Is your child] attending a PUBLIC elementary, middle or high school?

<u>2014</u>		
n=219		
75%	Yes	
17%	No	
8%	Child/children are too young	

Q63. Do you or does any adult member of your household need training in basic reading skills?

<u>2014</u>	<u>2009</u>	
2%	2%	Yes
98%	98%	No
1%	0%	Do not know

Q64. Do you or does any adult member of your household need training to improve their fluency in English?

<u>2014</u>	<u>2009</u>	
3%	2%	Yes
97%	98%	No

MAR. What is your CURRENT marital status?

<u>2014</u>	<u>2009</u>	
58%	65%	Married
25%	17%	Single, never married
8%	7%	Divorced
6%	9%	Widower
3%	2%	Separated

Hisp. Are you Hispanic or Latino, or not?

<u>2014</u>	<u>2009</u>	
5%	7%	Yes
95%	93%	No

RACE. Which of the following categories best describes your racial background?

<u>2014</u>	<u>2009</u>	
92%	89%	White
4%	5%	Black or African American
6%	6%	Other

NumA. Including yourself, how many adults 18 years of age or OLDER CURRENTLY live in this household?

<u>2014</u>	<u>2009</u>	
18%	20%	1
56%	64%	2
16%	11%	3
10%	5%	4 or more

NumC. How MANY children UNDER 18 currently live in this household?

<u>2014</u>	<u>2009</u>	
60%	57%	None
15%	16%	1
12%	14%	2
9%	8%	3
5%	5%	4 or more

WORK. Are you currently working FULL-time, PART-time, going to school, keeping house or something else?

<u>2014</u>	<u>2009</u>	
53%	52%	Full-time
18%	19%	Retired
13%	12%	Part-time
5%	2%	Going to school
5%	8%	Keeping house
4%	2%	Disabled
3%	4%	Unemployed
0%	1%	Don't know

INC1. And, just for statistical purposes, we need to know if your total family income is above or below \$50,000 per year?

<u>2014</u>	<u>2009</u>	
11%	17%	Under \$25,000
12%	13%	\$25-\$35,000
15%	15%	\$35-\$50,000
25%	26%	\$50-\$75,000
13%	15%	\$75-\$100,000
15%	9%	Over \$100,000
9%	5%	Don't know

DONE. Record gender

<u>2014</u>	<u>2009</u>	
48%	48%	Male
52%	52%	Female